

---

# Region 1 Plan

Stakeholder Advisory Committee  
Transportation & Land Use  
February 21, 2024

Anne Arundel County  
Office of Planning and Zoning



---

# Agenda

1. Region Plan process update
2. Transportation discussion
3. BWI Airport plans
4. Group recap
5. Public comments
6. Next Steps



---

# 1. Region Plan Process Update

---

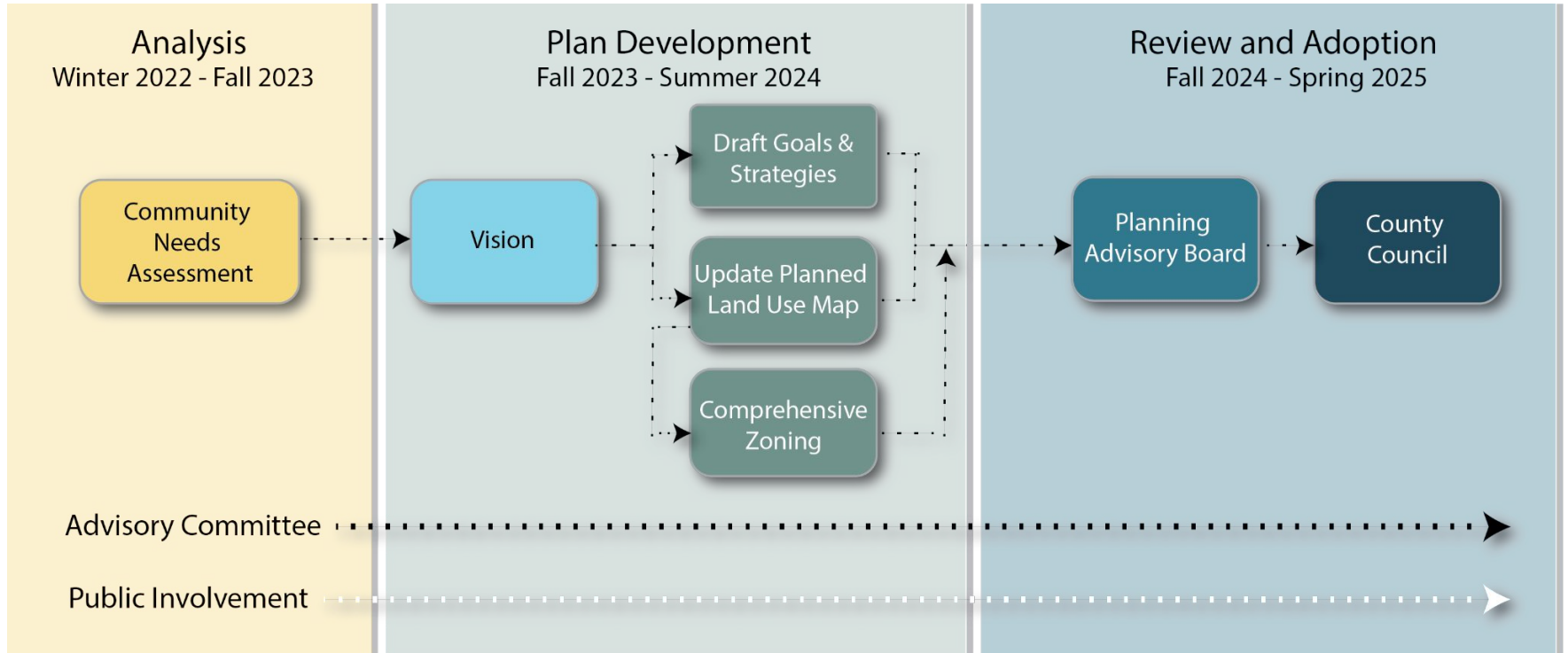
# Stakeholder Advisory Committee Meetings

- 1) Environment & History
- 2) Economic Development & Public Schools
- 3) Housing & Redevelopment
- 4) Transportation & Land Use
- 5) Land Use & Zoning
- 6) Zoning Maps
- 7) Zoning Maps and Draft Plan

[aacounty.org/region9](http://aacounty.org/region9)



# Process and Timeline



---

## 2. Transportation Discussion

# Connections Between Land Use and Transportation

- Overall, County policy is to focus development and infrastructure investment to support it in Targeted Areas - where there is close proximity between housing, shopping, employment, and transit options.
- Separation of uses (housing, shopping, work places) creates landscape that makes driving a personal vehicle necessary.
- Historically, construction of roads has not included facilities for walking and biking.
- Spread out housing, shopping and workplaces that are spread out and disconnected make public transit challenging to operate.
- Construction and widening of roads tends to encourage more traffic and more development (induced demand).

# Regional and Countywide Transportation Planning Context

**MOVE ANNE ARUNDEL!**  
COUNTY TRANSPORTATION  
MASTER PLAN



## Walk & Roll Anne Arundel!

January 2023



## Central Maryland Transit Development Plan

Your Transit Future 2022



Transit for Central Maryland



# Transportation Discussion - Areas

1. Transit Service
2. Hanover - Harmans
3. Linthicum - Ferndale
4. Brooklyn Park - Curtis Bay

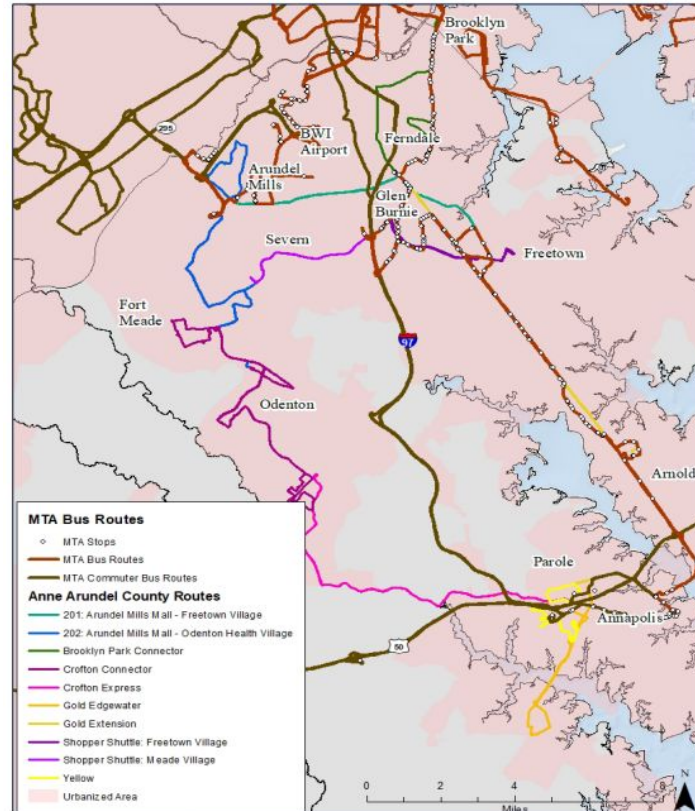
For Each Area:

- Existing Issues / Concerns
- Ongoing and Planned Studies and Projects
- Future Recommendations

# Transit Service

## Service Providers

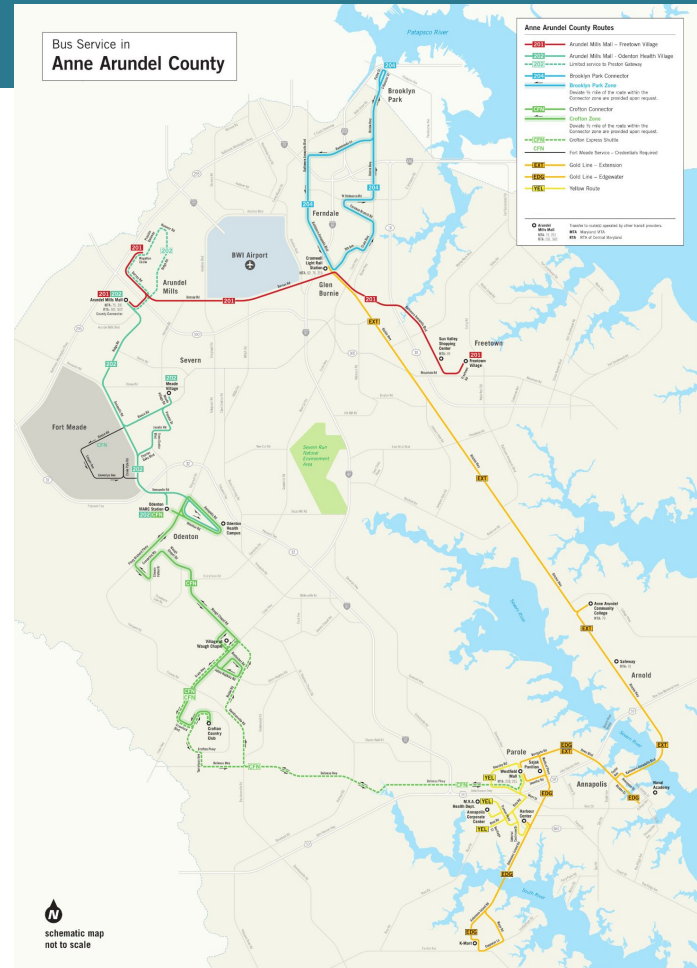
- County: Bus
- BWI Partnership: Shuttle Bus
- MTA: Bus and Light Rail
- RTA: Bus
- MARC: Rail



# County Transit Service

## County Routes

- Brooklyn Park Connector
- AA 201 and 202
- North County Call N Ride



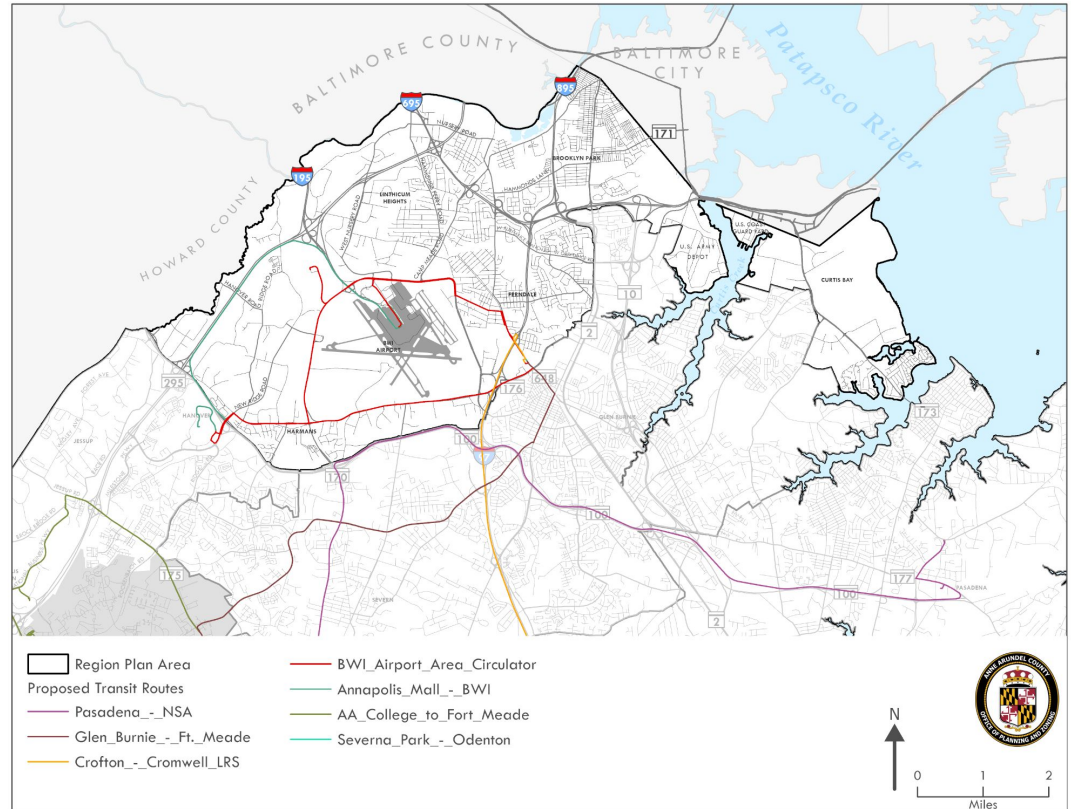
# Draft Transit Development Plan

## Needs Assessment

- Demographics and Land Use
- Rider survey, community survey, stakeholder interviews
- Ridership and costs analysis

## Recommendations

- Increased promotion / marketing
- Increased frequency of service for existing lines
- BWI Airport Circulator connecting the main transit hubs
- Microtransit - more, smaller Call N Ride zones

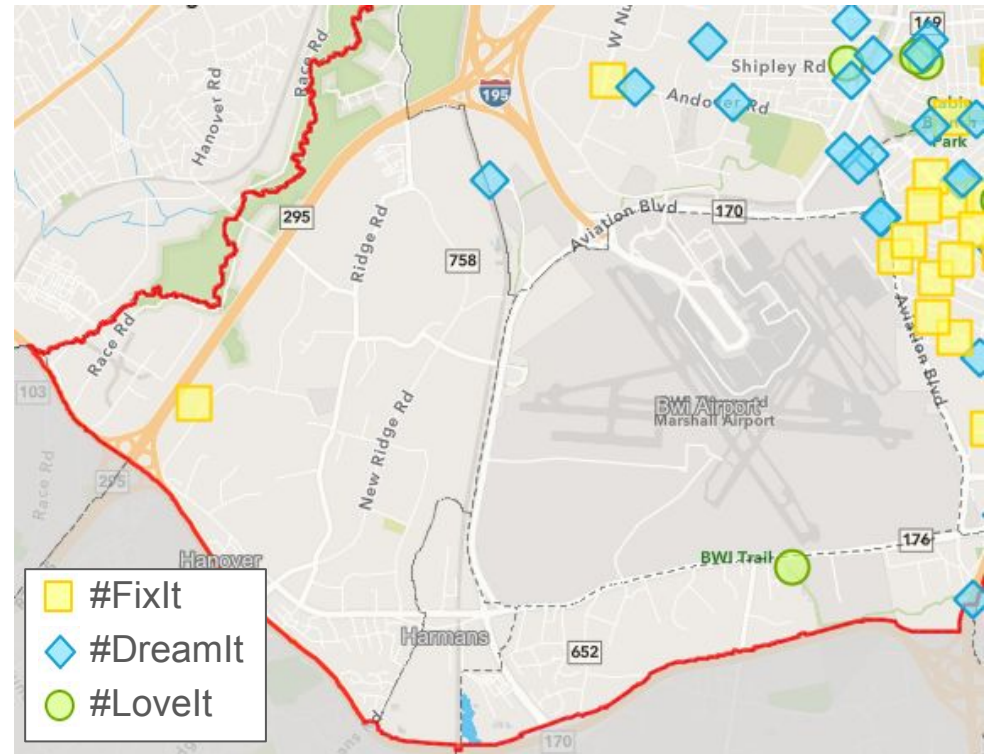


# Hanover - Harmans

## Issues / Concerns

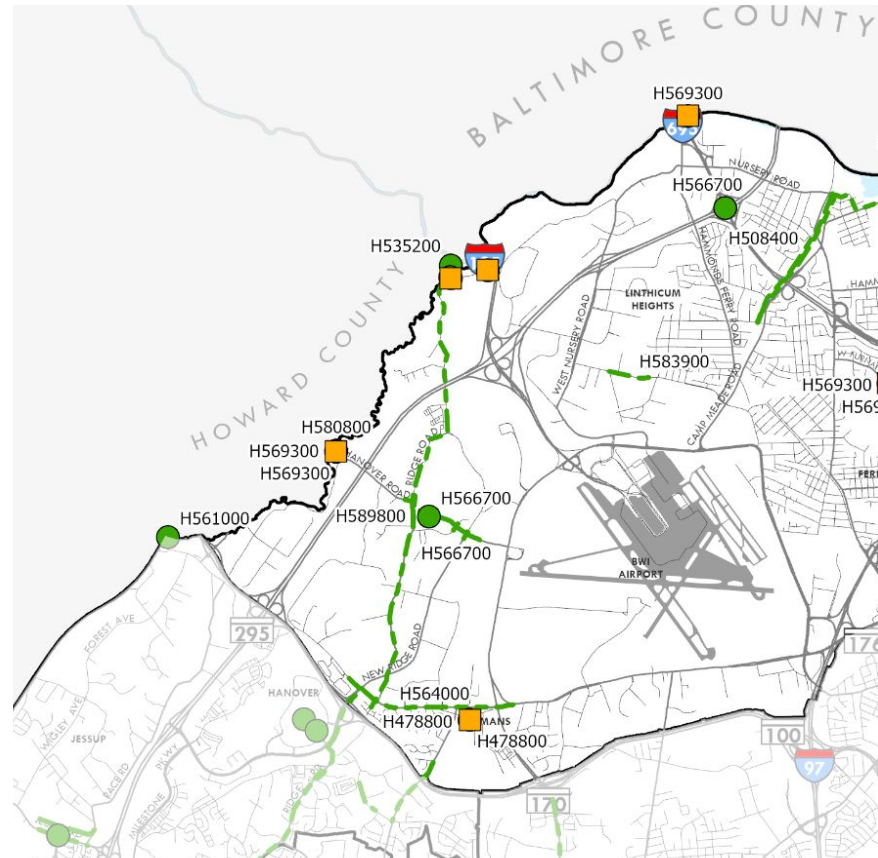
- Infrastructure keeping pace with development
- Lack of pedestrian and bike facilities
- Ridge Road

## Public Feedback Map



# Hanover - Harmans: Projects and Studies

- Ridge Road Improvements
- Hanover Road Improvements
- Sidewalk / Path Connections - MD 176 and MD 713



# Bike Infrastructure Terms



**Separated bike lane**



**Shared use path**

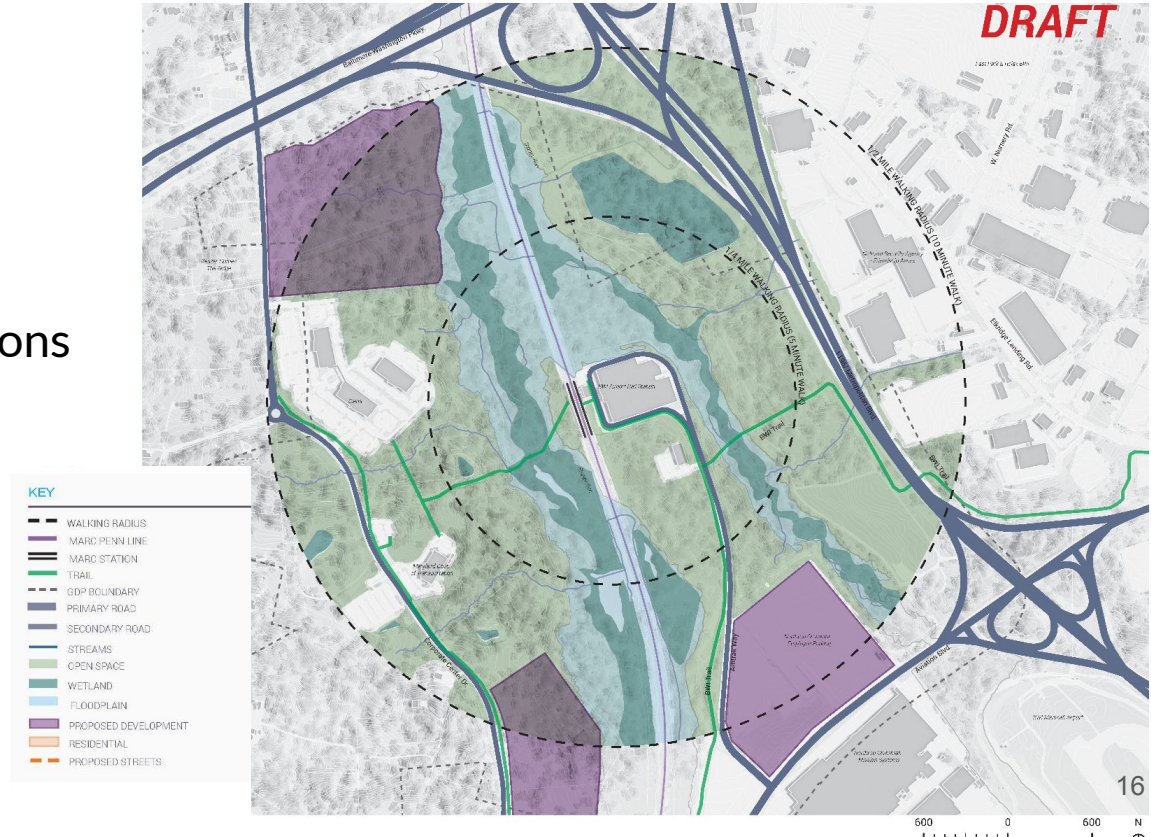


**Buffered bike lane**

# BWI Marc Station - Transit Oriented Development

## Opportunities and Constraints

- Proximity to highways and airport
- Streams, wetlands and floodplains
- Flexibility in zoning regulations

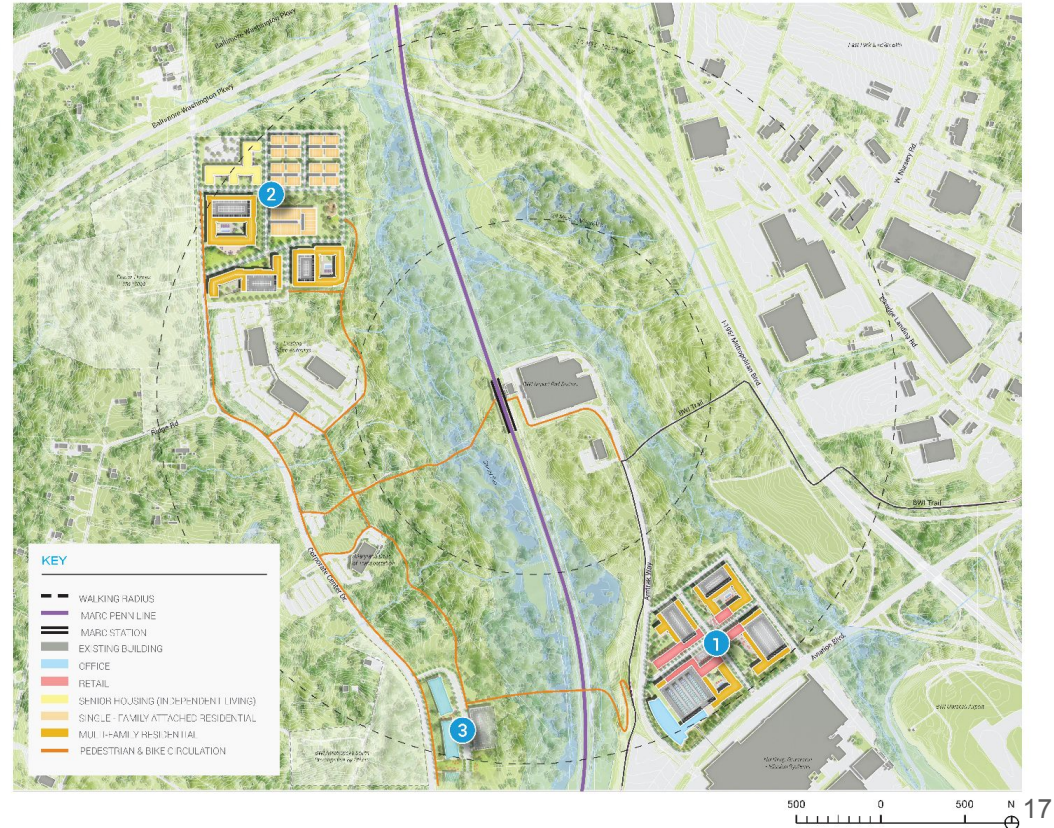




# BWI Marc Station - Transit Oriented Development

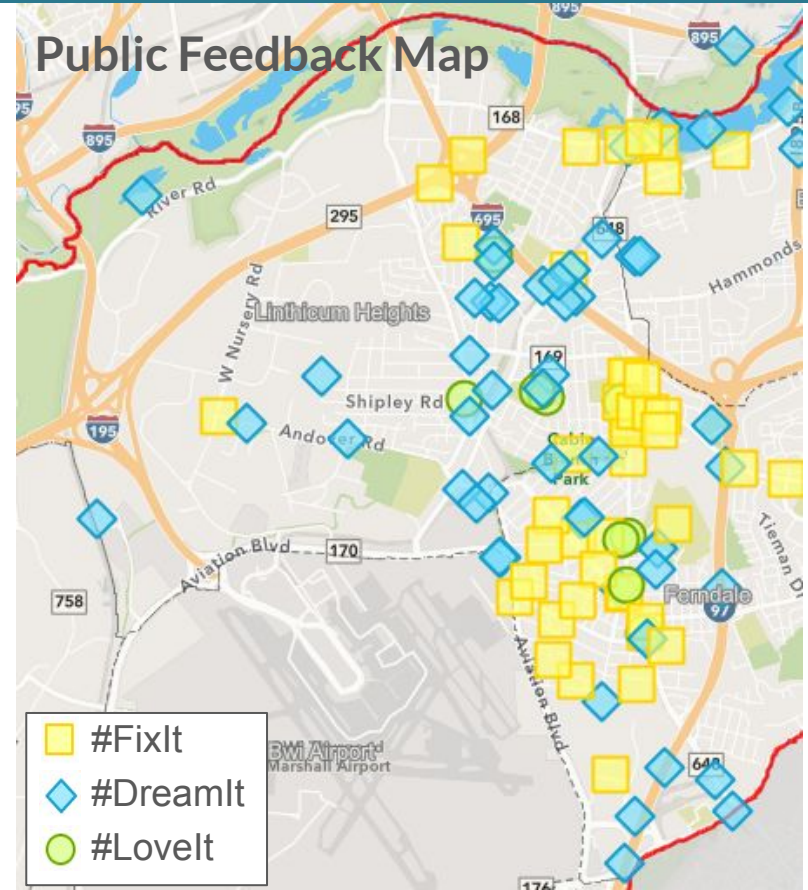
## DRAFT Potential Future Development Concept

1. Mixed use district - access to employment, BWI trail, and station
2. Residential - mix of apartments and townhomes
3. Additional offices



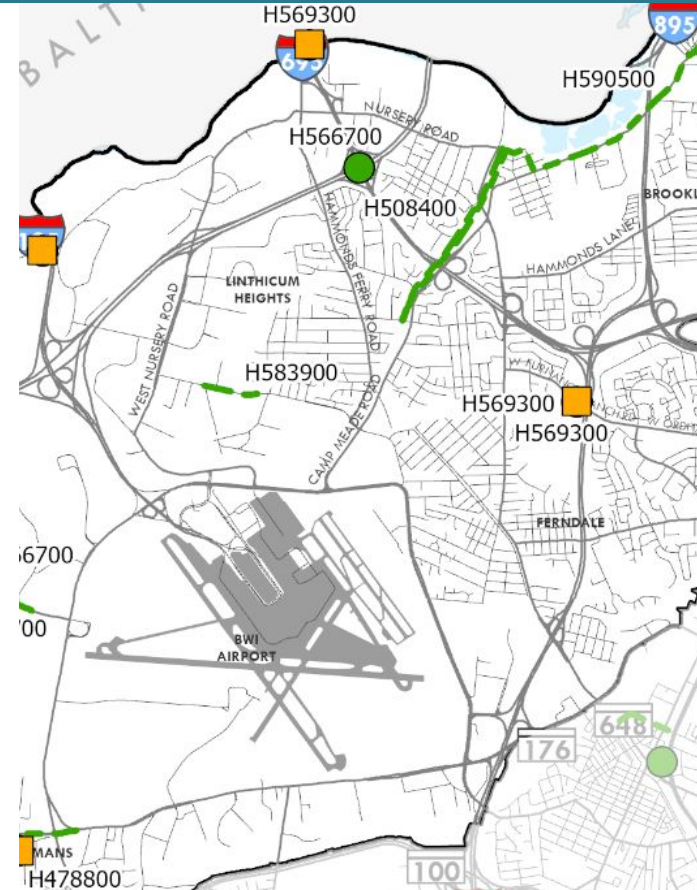
# Linthicum - Ferndale: Issues and Concerns

- B&A Boulevard - traffic and safety
- Access and safety around shopping areas and schools
- Light Rail Stations - some see potential for more housing and development, others oppose
- Lack of sidewalk and trail connectivity



# Linthicum - Ferndale: Projects and Studies

- Andover Road Sight Distance
- West Nursery Road - operations study
- Linthicum Elementary Safe Routes to School study



# Linthicum Light Rail Station - Transit Oriented Development

## Opportunities and Constraints

- Existing station
- Surrounding residential neighborhood not likely to change
- Public safety concerns
- Potential to improve public realm around station and add public amenities



# Linthicum Light Rail Station - Transit Oriented Development

## DRAFT Potential Future Improvements

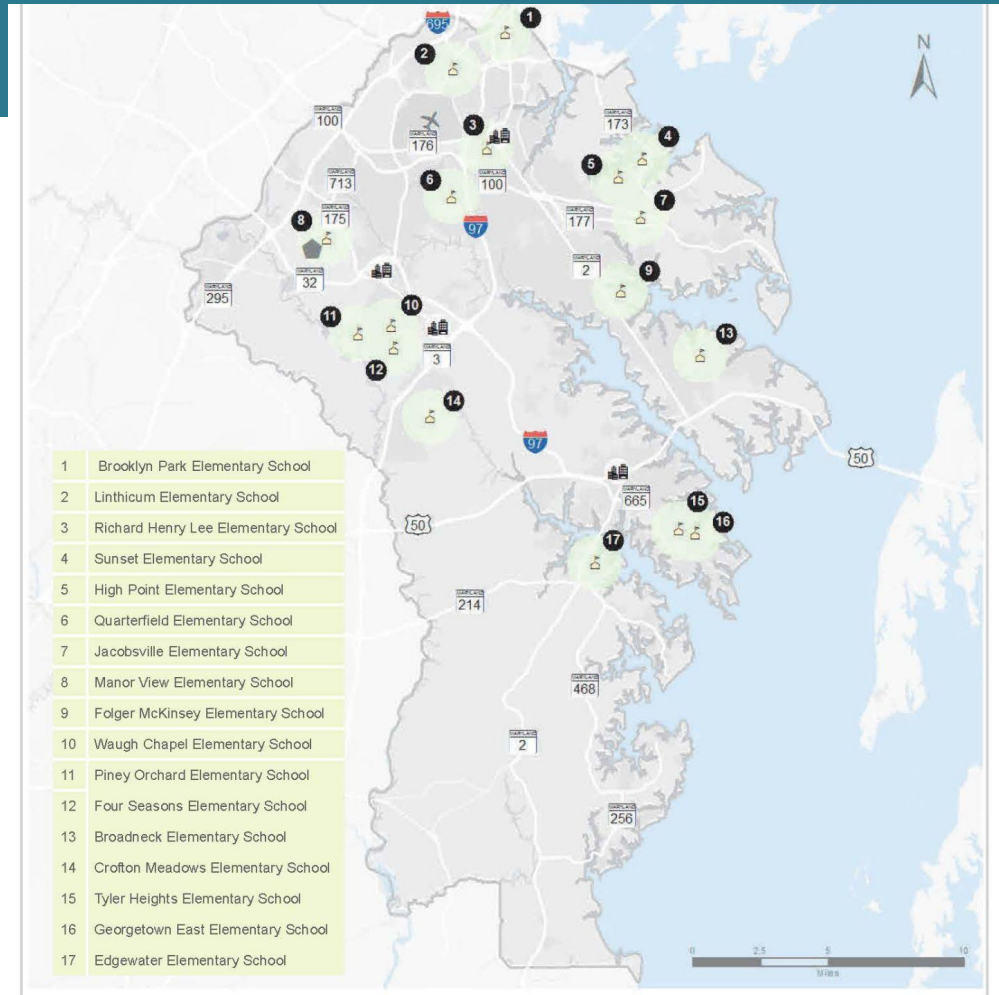
- Station entrance - increase visibility, add drop off zone
- Civic Plaza at intersection near station entrance
- Camp Meade Road streetscape enhancement
- Scale of buildings fit surrounding context (1-3 stories)



# Safe Routes to Schools

## Planning Studies

- Linthicum Elementary
- Brooklyn Park Elementary

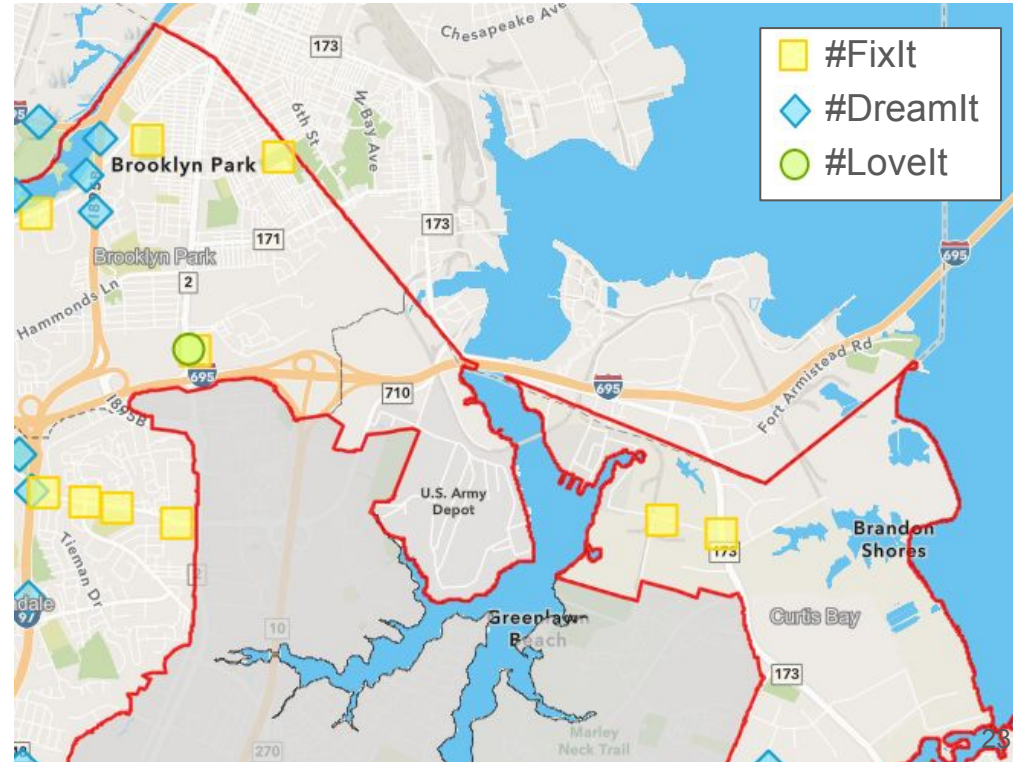


# Brooklyn Park - Curtis Bay: Issues & Concerns

## Issues / Concerns

- Aging Infrastructure
- Safety and walkability along Ritchie Hwy corridor
- Opportunity for streetscape improvements to support redevelopment and arts district
- Ordnance Road public safety / collisions

## Public Feedback Map



# Brooklyn Park - Neighborhood Transportation Study

## Invisible Infrastructure Recommendations

- Expand access to community destinations
- Expand access to healthy and affordable food
- Prepare for multi-modal redevelopment on Ritchie Hwy
- Maintain Sidewalks and Infrastructure
- Improve ease of taking transit
- Maintain a clean and functional Ritchie Hwy
- Grow community wealth

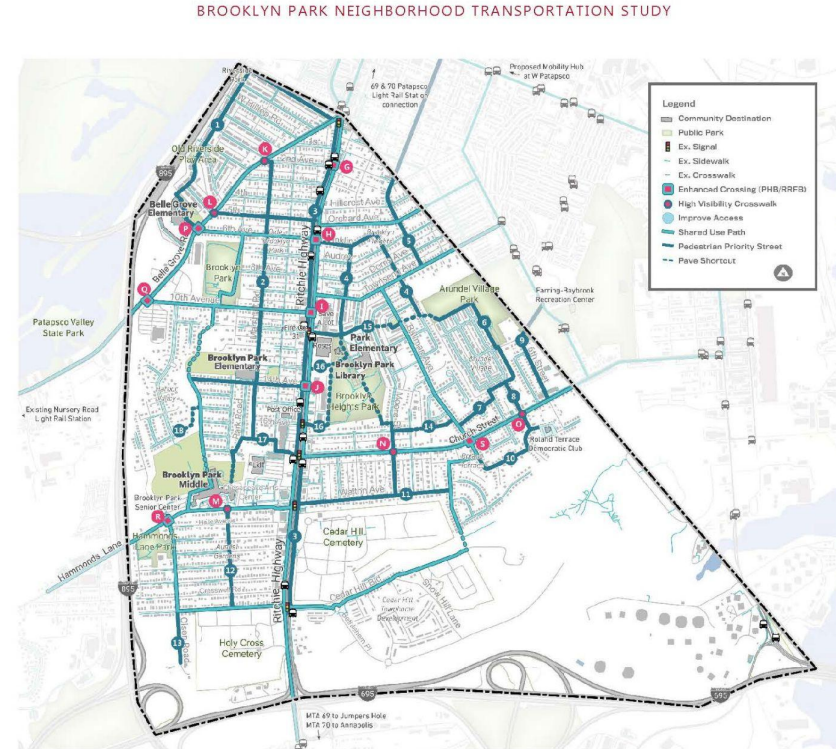


Figure 28 Proposed Pedestrian Network



---

# 3. BWI Airport Plans

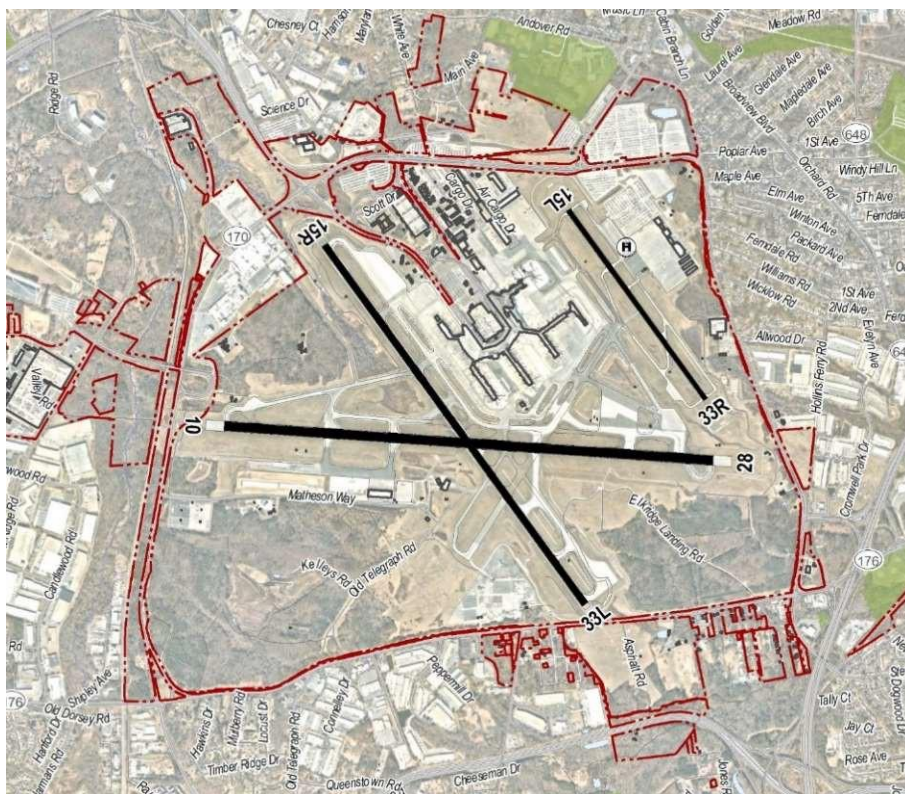


# Baltimore/Washington International Thurgood Marshall Airport

Anne Arundel County Stakeholder Advisory Committee - Region 1  
Transportation & Mobility

February 21, 2024

# BWI Marshall Today



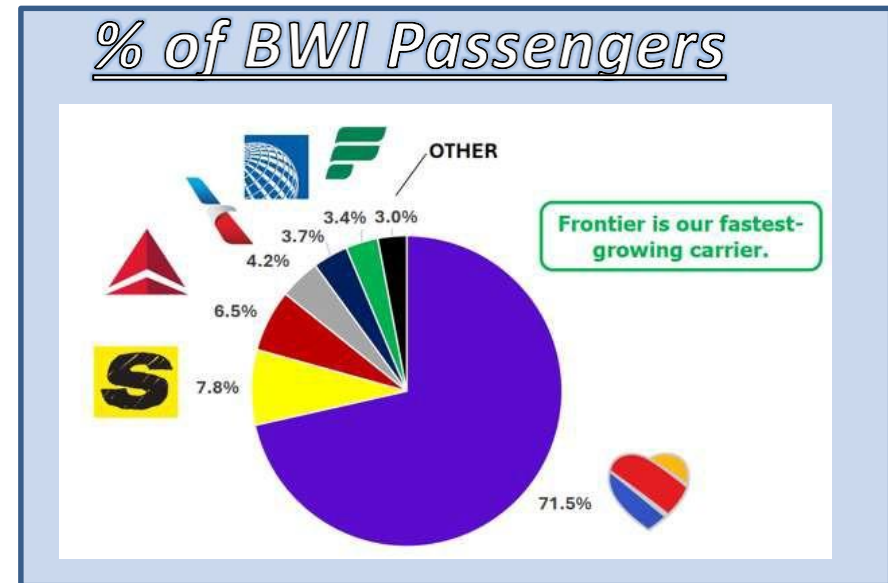
Source: MAA

- Approximately **3,800 acres**
- Passenger terminal:  
**2M+ SF**
- 2 commercial service runways
- 1 general aviation runway

# Carriers Serving BWI Marshall



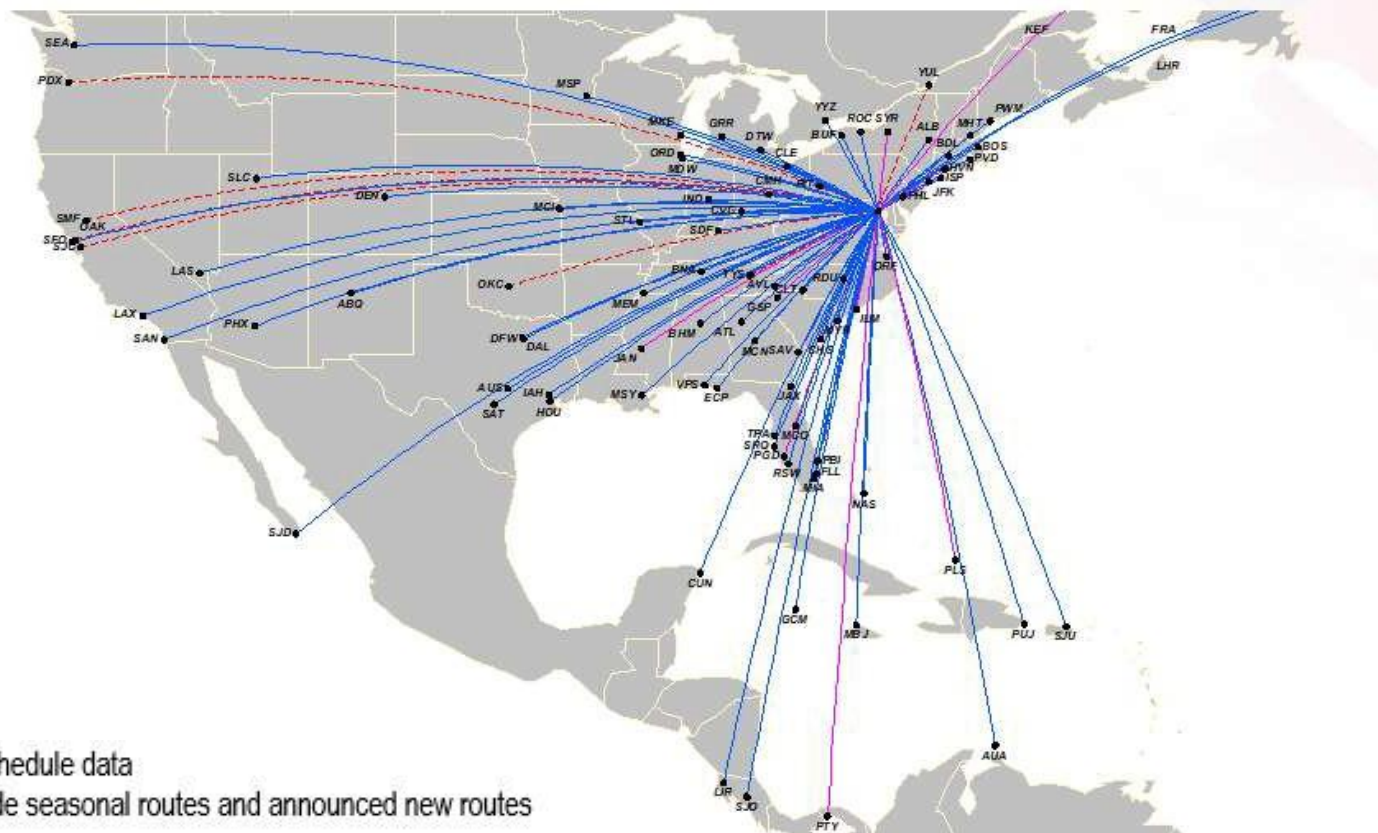
Source: MAA



Source: MAA

# BWI Marshall Non-Stop Destinations

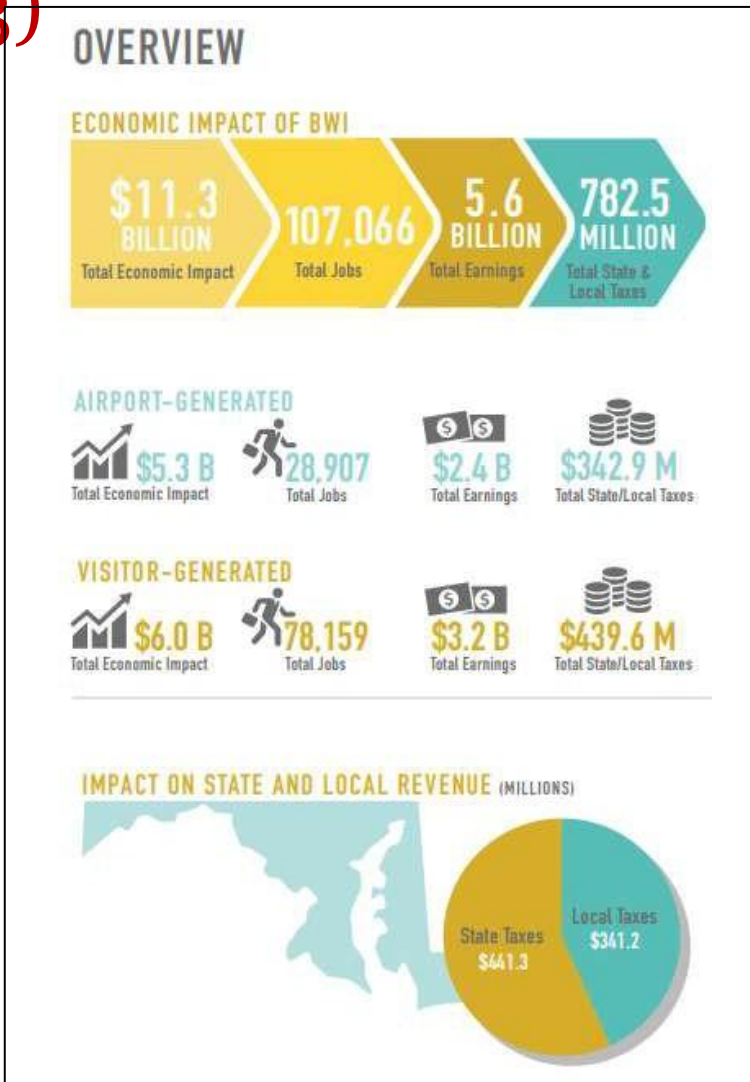
BWI Marshall's route map includes 85 nonstop destinations



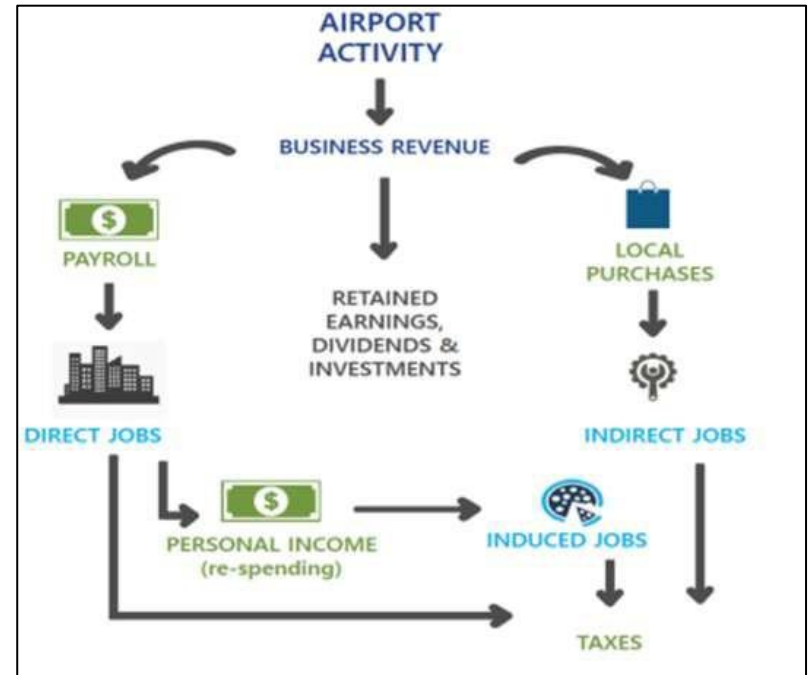
Source: MAA via Cirium schedule data

Note: 85 destinations include seasonal routes and announced new routes

# BWI Marshall Economic Impact (FY 2023)



Source: Martin & Associates



Source: Martin & Associates

# BWI Marshall – Job Creation



- New facility opened October 2019
- 200,000 square foot Cargo Building
- Rehabilitated taxiways and new runway connector
- Mathison Way improvements
- Expanded local bus service to site
- **1,500+ new jobs to the region**



“Amazon’s Baltimore location is one of the top 5 busiest Amazon Air facilities in the world.”

(WJZ-13, 6/8/21)



# Airport Noise Zone (ANZ)

---

Maryland Environmental Noise Act of 1974

*“Provide a positive basis for abatement of existing noise problems in communities near airports and to prevent new noise problems.”*

The official, certified BWI Marshall Airport Noise Zone consists of the 65, 70, and 75 Day-Night Average Sound Level (DNL) contours

Provides a process for permits for construction within the ANZ surrounding BWI Marshall Airport.

Noise Model Input:

## Airport physical inputs

- Existing runways
- Planned development

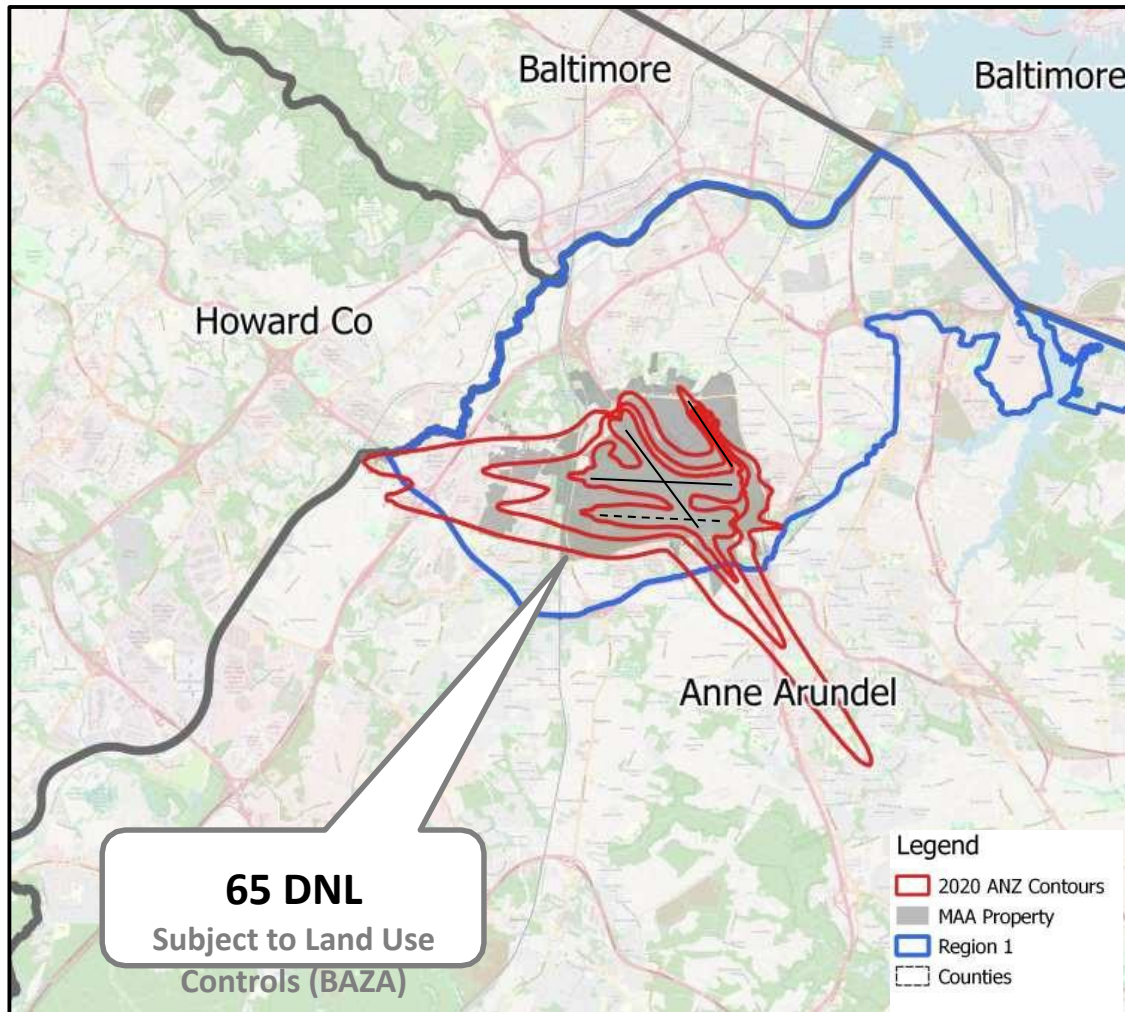
## Aircraft operational inputs:

*Current conditions and 10-year forecast*

- Number of aircraft operations
- Aircraft fleet mix
- Day-night split of operations
- Runway utilization
- Flight track location and use



# 2020 BWI Marshall ANZ



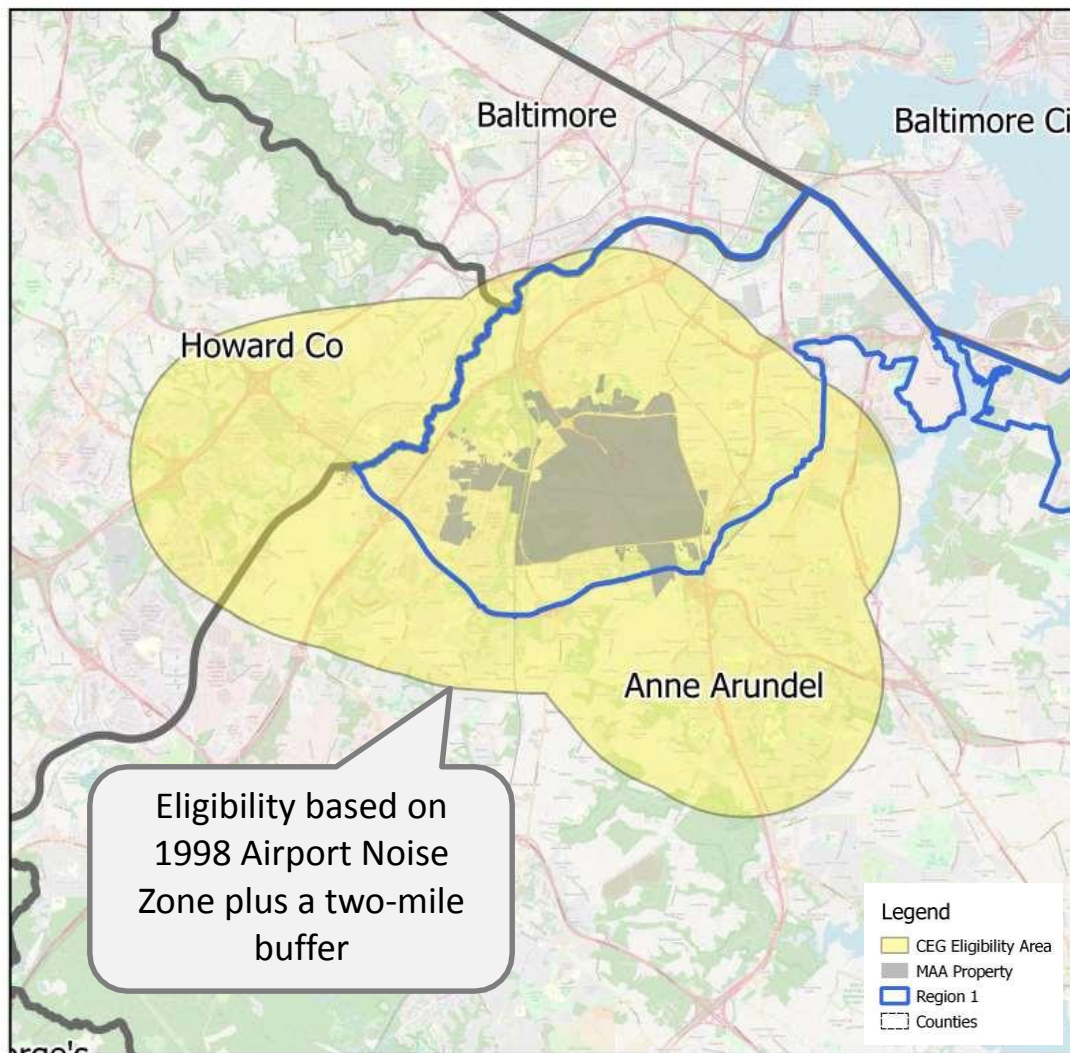
NOISE COMPATIBILITY STANDARDS	
LAND USE	AREAS OF NOISE COMPATIBILITY (NOISE LEVELS)
Residences, schools, hospitals, libraries, churches, auditoriums, rest homes, nursing homes, concert halls.	Up to 65 DNL
Transient lodging, hotels, motels, sports arenas, outdoor spectator sports, playgrounds, neighborhood parks, noise sensitive manufacturing.	Up to 70 DNL
Golf courses, riding stables, water recreation, cemeteries, office buildings, retail and wholesale establishments, movie theaters, restaurants, industry, manufacturing, utilities, livestock farming, animal breeding.	Up to 75 DNL
Agriculture (except livestock), mining, fishing, aviation related uses.	All

Source: Code of Maryland Regulations, Title 11. Department of Transportation, Subtitle 03. Maryland Aviation Administration, Chapter 11.03.03. Airport Noise Control Program, Sec. 11.03.03.03. Limits for Cumulative Noise Exposure <http://www.dsd.state.md.us/comar/comarhtml/11/11.03.03.03.htm>

DNL Contour Interval	Estimated Residential Population	Estimated Residential Housing Units	Area (acres)
65-70 dB	3,856	1,518	3,048
70-75 dB	113	44	1,404
>75 dB	2	1	1,091
<b>Total</b>	<b>3,971</b>	<b>1,563</b>	<b>5,543</b>

Sources:  
HMMH 2020  
2010 US Census

# Community Enhancement Grant Program



- Established in 2001
- Eligibility within the 1998 Airport Noise Zone plus two miles
- Eligible Community Associations
- Transportation-related projects (sidewalks, community signage, etc)
- Committee of 11 members

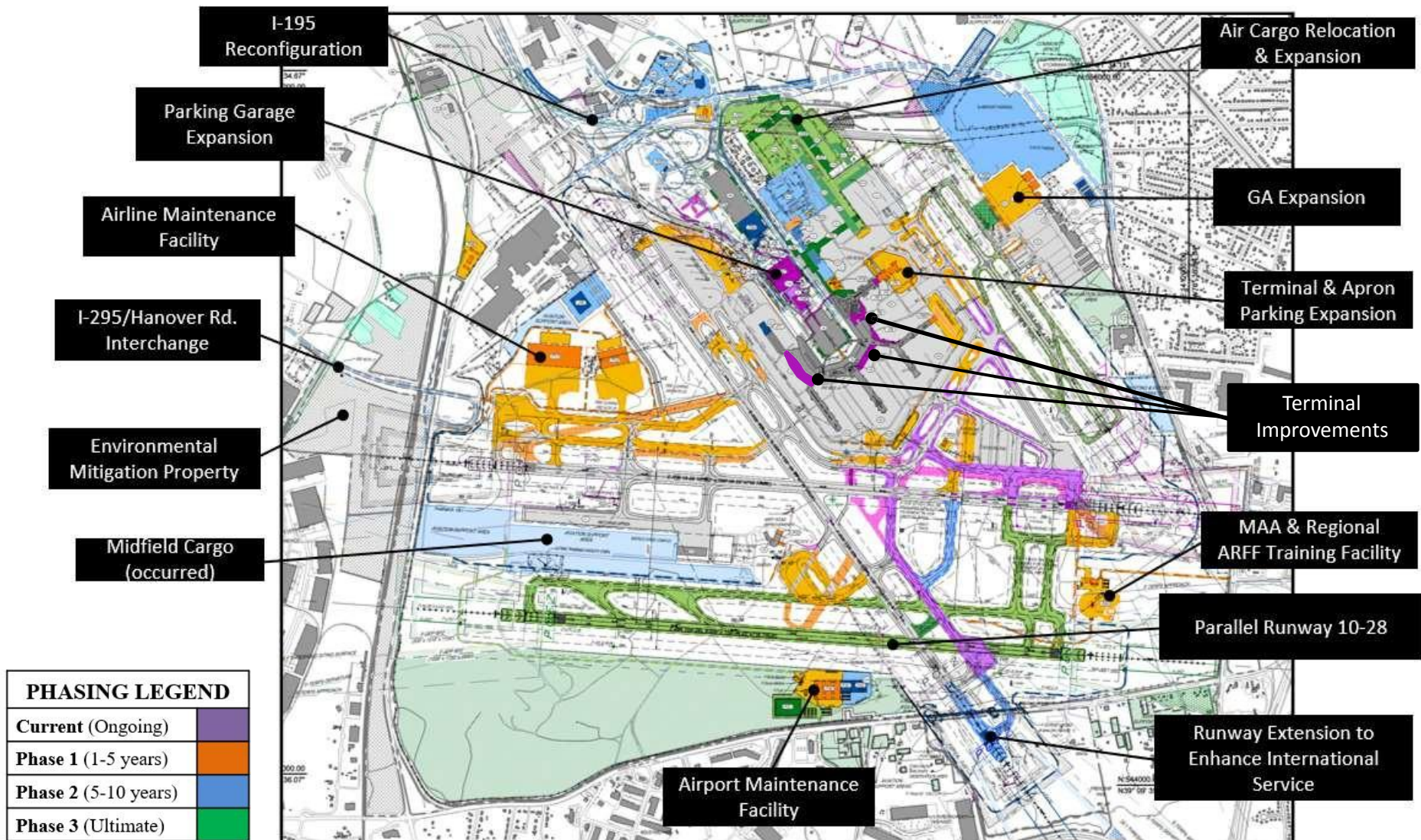
# BWI Marshall - Passenger Forecast

Fiscal Year	Domestic	International	Total
<b>Historical</b>			
2022	21,102,000	1,142,000	22,244,000
<b>Forecast</b>			
2023	25,026,000	1,264,000	26,290,000
2024	28,252,000	1,400,000	29,652,000
2025	30,334,000	1,526,000	31,860,000
2026	30,998,000	1,590,000	32,588,000
2027	31,634,000	1,648,000	33,282,000
2028	32,274,000	1,710,000	33,984,000
2029	32,936,000	1,772,000	34,708,000
2030	33,606,000	1,834,000	35,440,000
2031	34,262,000	1,896,000	36,158,000
2032	34,916,000	1,954,000	36,870,000
2033	35,562,000	2,016,000	37,578,000
2034	36,232,000	2,076,000	38,308,000
2035	36,916,000	2,140,000	39,056,000
2036	37,616,000	2,204,000	39,820,000
2037	38,326,000	2,266,000	40,592,000
2038	39,044,000	2,328,000	41,372,000
2039	39,766,000	2,392,000	42,158,000
2040	40,500,000	2,458,000	42,958,000
2041	41,226,000	2,522,000	43,748,000
2042	41,972,000	2,584,000	44,556,000
2043	42,734,000	2,652,000	45,386,000
<b>CAGRs</b>			
2022-43	3.4%	4.1%	3.5%

**Actual FY23 = 24.9M**

Source: MAA

# BWI Marshall Airport Layout Plan



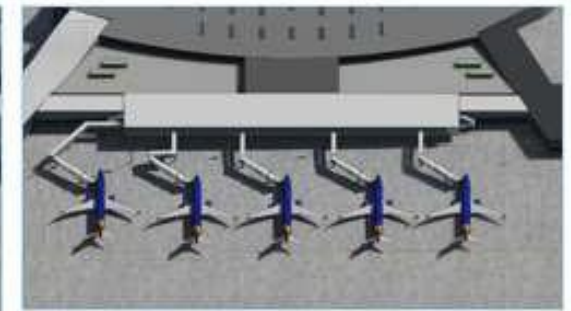
# Capital Improvements – Under Construction

## Concourse A/B Connector and Baggage Handling System (BHS) Improvements



COMPLETION  
FY 2025

- Baggage Handling System in-line system to provide optimal operational efficiency
- To be funded by Special Transportation Project Revenue Bonds



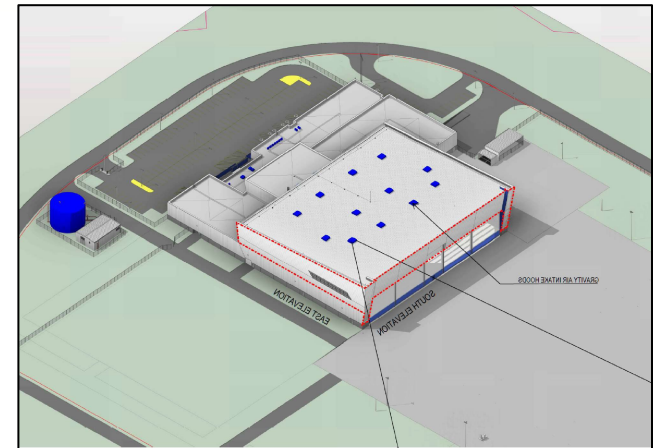
# Capital Improvements – Under Construction

## Southwest Airlines Aircraft Maintenance Facility



COMPLETION  
FY 2025

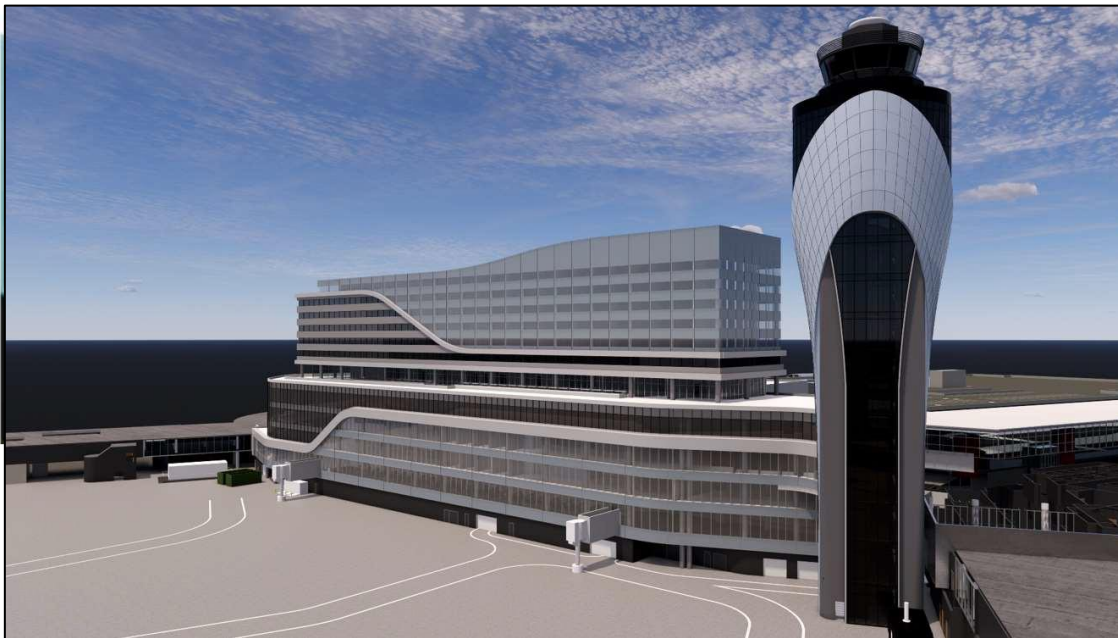
- Sized with 3 bays for single-aisle aircraft and employ 120 airline technicians
- To be funded by MDTA loan



'be better'

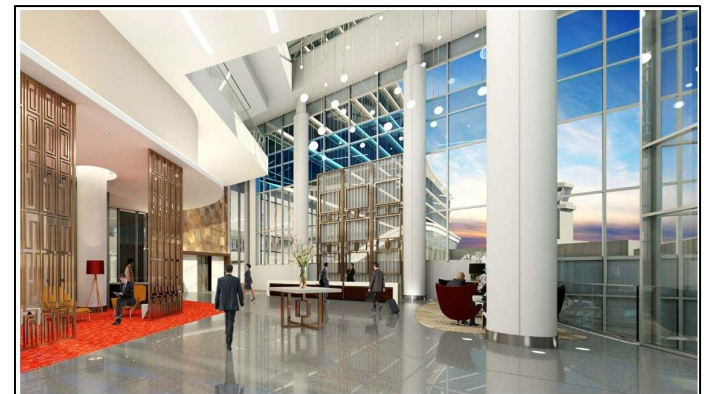
# Capital Investments – In Planning

## BWI C/D Connector and Airport Traffic Control Tower



### PROGRAM DEVELOPMENT

- Project will complete the post-security access terminal wide
- Program Includes
  - Airport Traffic Control Tower
  - Airport Operations Center
  - FAA Operations Space
  - Two new holdrooms on connector
  - TSA passenger screening
  - New inline baggage handling system
  - New baggage claim facilities
  - Airport Hotel and Conference Center



# Capital Investments – In Planning

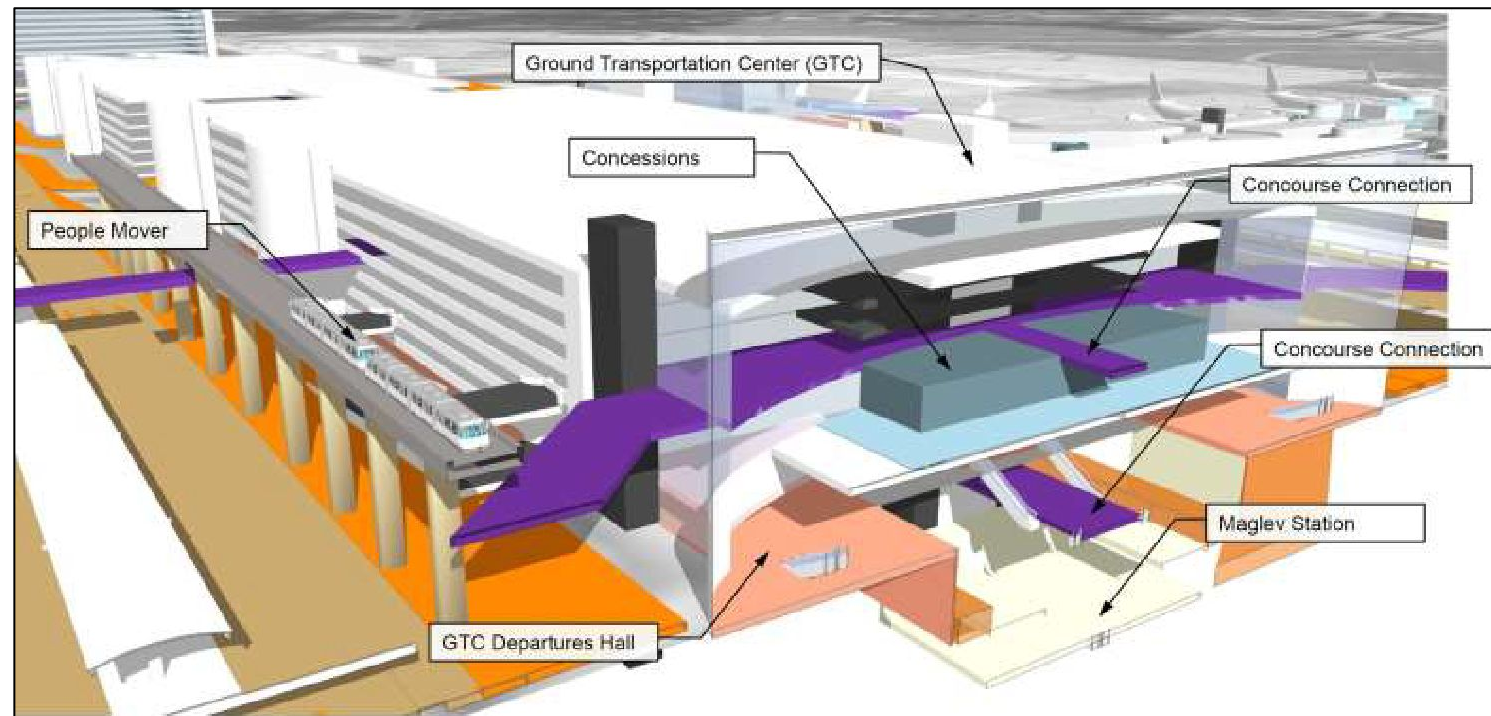
## Ground Transportation Center (GTC)

### Project Purpose

- Organize landside navigation and services, improving customer experience.

### Benefits:

- Improves landside connections to terminal for customers
- Provides passenger amenities
- In-garage check-in
- Relieve curbside congestion
- Consolidates “for-hire” vehicle & bus drop-offs pick-ups
- Proposes people mover connection







THANK YOU  
QUESTIONS /  
DISCUSSION

---

# 4. Group Recap

---

# 5. Public comments

---

# 6. Next Steps

# Next steps

- **Preliminary Economy and Housing strategies**
  - *Drop in session: February 6 @ Brooklyn Park Library (1:00 p.m. - 7:30 p.m.)*
  - Questionnaire live February 6 - March 5 ([aacounty.org/region1](http://aacounty.org/region1))
- **Stakeholder Advisory Committee Meeting (joint meeting with Region 3)**
  - March 12: 5:30 PM - 8:30 PM @ Anne Arundel County Utility Operation Complex (445 Maxwell Frye Rd, Millersville, MD 21108)

## Speaker information:

AACo Office of Transportation: Brian Ulrich and Tanya Asman ([trulri44@aacounty.org](mailto:trulri44@aacounty.org), [trasma00@aacounty.org](mailto:trasma00@aacounty.org);  
[www.aacounty.org/transportation](http://www.aacounty.org/transportation))

AACo Department of Public Works: Nestor Flores ([pwflor11@aacounty.org](mailto:pwflor11@aacounty.org), [www.aacounty.org/public-works](http://www.aacounty.org/public-works))

MDOT - State Highway Administration: Tavon Hawkins ([thawkins4@mdot.maryland.gov](mailto:thawkins4@mdot.maryland.gov), [roads.maryland.gov/pages/home.aspx](http://roads.maryland.gov/pages/home.aspx))

MDOT - Maryland Aviation Administration: Shawn Ames ([sames@bwiairport.com](mailto:sames@bwiairport.com), [www.marylandaviation.com/](http://www.marylandaviation.com/))

AACo Office of Planning and Zoning: Erica Chapman, Sam Meyers, Mark Wildonger ([region1@aacounty.org](mailto:region1@aacounty.org),  
[www.aacounty.org/region1](http://www.aacounty.org/region1))

**Sign up for updates at [www.aacounty.org/region1](http://www.aacounty.org/region1)**