

Upper Patuxent River Sediment TMDL Restoration Plan

Anne Arundel County, Maryland
November 2016 - Final



Upper Patuxent River Sediment TMDL Restoration Plan

November 2016 - Final

Prepared for:



Anne Arundel County
Department of Public Works
Watershed Protection and Restoration Program
2662 Riva Road, P.O. Box 6675
Annapolis, Maryland 21401

Prepared by:



KCI Technologies, Inc.
936 Ridgebrook Road
Sparks, Maryland 21152

Table of Contents

1	Introduction.....	4
1.1	Background and Purpose	4
1.2	TMDL Allocated and Planned Loads Summary	5
1.3	Restoration Plan Elements and Structure.....	6
2	Watershed Characteristics	8
2.1	Watershed Delineation	8
2.2	Upper Patuxent.....	8
2.3	Land Use/Land Cover	12
2.3.1	Existing Land Use/Land Cover.....	12
2.3.2	Impervious Surfaces.....	13
2.4	Water Quality.....	17
2.4.1	Use Designations.....	17
2.4.2	303(d) Impairments	17
2.4.3	TMDLs	17
2.4.4	NPDES.....	18
3	Causes and Sources of Impairment (a)	19
3.1	Impairments.....	19
3.2	Sources.....	20
3.2.1	Urban Stormwater Runoff	20
3.2.2	In-stream Sources	21
3.3	Anticipated Growth.....	24
3.3.1	Estimates of Future Growth.....	24
3.3.2	Offsetting Sediment Loads from Future Growth	26
4	Management Measures (c)	27
4.1	Modeling Approach.....	27
4.2	Best Management Practices	28
5	Expected Load Reductions (b)	32
5.1	2015 Progress – Actual Implementation.....	32
5.2	Planned Implementation	33
6	Technical and Financial Assistance Needs (d)	34
6.1	Funding Sources.....	36
7	Public Participation / Education (e).....	37
7.1	County Outreach Efforts	37
7.2	Public Comment Period	39
8	Implementation Schedule and Milestones (f & g)	39
8.1	Loading Allocations and Milestone Targets.....	39
8.2	Implementation Milestones.....	40
8.3	Implementation Priorities.....	40
8.3.1	Stream Reach Restoration	41
8.3.2	Subwatershed Restoration	42
8.3.3	Prioritization of Strategy Implementation	48
8.4	Implementation Strategy.....	48
9	Load Reduction Evaluation Criteria (h).....	49
9.1	Tracking Implementation of Management Measures	49
9.2	Estimating Load Reductions.....	51
9.3	Tracking Overall Program Success through Monitoring	51

9.4	Best Management Practices Inspection and Maintenance	52
10	Monitoring (i)	53
11	References	57

List of Tables

Table 1:	Upper Patuxent River Local TMDL Allocated and Planned Loads	6
Table 2:	Upper Patuxent River Watershed Drainage Area and Perennial Stream Miles	8
Table 3:	2011 Land Use / Land Cover	12
Table 4:	Upper Patuxent River Watershed Percent Impervious Cover	13
Table 5:	Use Designations of the Upper Patuxent River	17
Table 6:	Erosion Inventory and Severity per Subwatershed (Anne Arundel County, 2008)	22
Table 7:	Linear Feet of Erosion per Subwatershed	23
Table 8:	Typical Sediment Reduction from Stormwater BMPs	30
Table 9:	Sediment Loads Required for the Upper Patuxent Watershed Local TMDL Anne Arundel County Phase I MS4 Source – Calibrated to BayFAST	32
Table 10:	Current BMP Implementation through 2015 for Upper Patuxent River	32
Table 11:	2015 Progress Reductions Achieved	33
Table 12:	Restoration BMP Implementation - Current 2015 and Planned 2025 Implementation Levels for the Upper Patuxent River	33
Table 13:	2025 Planned Reductions	34
Table 14:	Upper Patuxent River Cost over Milestone Periods	36
Table 15:	Upper Patuxent Planning and Target Loads (edge-of-stream loads)	40
Table 16:	Upper Patuxent River Planning Milestones for Implementation	40
Table 17:	Stream Priority Rating Indicators for Restoration (Anne Arundel, 2008)	41
Table 18:	Stream Restoration Assessment Results (Anne Arundel County, 2008)	41
Table 19:	Subwatershed Priority Rating Indicators for Restoration (Anne Arundel, 2008)	42
Table 20:	Subwatershed Restoration Assessment Results (Anne Arundel County, 2008)	43
Table 21:	Countywide Biological Monitoring Results for Upper Patuxent River	55

List of Figures

Figure 1:	Upper Patuxent River Watershed	10
Figure 2:	Upper Patuxent River Subwatershed Location	11
Figure 3:	Upper Patuxent River Watershed Aerial Imagery (2014)	15
Figure 4:	Upper Patuxent River Watershed Land Cover (2011)	16
Figure 5:	Total Suspended Solids Load from Runoff Based on Existing Conditions - Includes BMP Reductions	21
Figure 6:	Modeled and Projected Land Use Loads	25
Figure 7:	Total Suspended Solids Loads from Runoff Based on Future Conditions - Includes BMP Reductions	26
Figure 8:	Street Sweeping Routes in Upper Patuxent Watershed, Anne Arundel County, Maryland	31
Figure 9:	Progress and Planned Reductions in the Upper Patuxent River Watershed	34
Figure 10:	Stream Restoration Assessment Results - Upper Patuxent River Northern Section	44
Figure 11:	Stream Restoration Assessment Results - Upper Patuxent River Southern Section	45
Figure 12:	Subwatershed Restoration Assessment Results for the Upper Patuxent River Northern Section	46
Figure 13:	Subwatershed Restoration Assessment Results for the Upper Patuxent River Southern Section	47

Appendices

- Appendix A Upper Patuxent Project List
- Appendix B Public Comment Period Documentation

List of Acronyms

AAWSA	Anne Arundel Watershed Stewards Academy
BayFAST	Chesapeake Bay Facility Assessment Scenario Tool
BMP	Best Management Practices
BSID	Biological Stressor Identification
CBP	Chesapeake Bay Program
CIP	Capital Improvement Program
EOS	Edge of Stream
H&H	Hydrologic and Hydraulic
LULC	Land use / Land cover
MAST	Maryland Assessment Scenario Tool
MDE	Maryland Department of the Environment
MS4	Municipal Separate Storm Sewer System
NPDES	National Pollutant Discharge Elimination System
OSDS	On-site Disposal Systems
SPSC	Step Pool Storm Conveyance
SW to MEP	Stormwater to the Maximum Extent Practicable
TMDL	Total Maximum Daily Load
TSS	Total Suspended Solids
USEPA	United States Environmental Protection Agency
WIP	Watershed Implementation Plan
WPRP	Watershed Protection and Restoration and Program

1 Introduction

1.1 Background and Purpose

The Anne Arundel County Department of Public Works (DPW) Watershed Protection and Restoration Program (WPRP) is developing restoration plans to address local water quality impairments for which a Total Maximum Daily Load (TMDL) has been established by the Maryland Department of the Environment (MDE) and approved by the U.S. Environmental Protection Agency (EPA). A TMDL establishes a maximum load of a specific single pollutant or stressor that a waterbody can assimilate and still meet water quality standards for its designated use class.

Under the Federal Clean Water Act (CWA), the State of Maryland is required to assess and report on the quality of waters throughout the state. Where Maryland's water quality standards are not fully met, Section 303(d) requires the state to list these water bodies as impaired waters. States are then required to develop a TMDL for pollutants of concern for the listed impaired waters. The Patuxent River Upper (Upper Patuxent) watershed has several impaired waters listings in Maryland's Integrated Report of Surface Water Quality [303(d) list and 305(b) Report] including nutrients, sediment, heavy metals, *Escherichia coli*, sulfates, and chlorides. There are currently three final TMDLs, which were all approved in 2011, within the Upper Patuxent; total suspended solids (TSS; sediment) TMDL, a mercury in fish tissue TMDL, and a bacteria TMDL. These TMDLs apply to several jurisdictions including Howard, Prince George's, and Anne Arundel Counties. This plan will specifically address the Upper Patuxent sediment TMDL under the responsibility of Anne Arundel County. The bacteria TMDL is being addressed by Anne Arundel County in a separate plan. Anne Arundel County does not share responsibility for the mercury in fish tissue TMDL.

Responsibility for Upper Patuxent sediment reduction is divided among the contributing jurisdictions, listed above. The TMDL loading targets, or allocations, are also divided among the pollution source categories, which in this case includes non-point sources (termed load allocation or LA) and point sources (termed waste load allocation or WLA). The WLA consists of loads attributable to regulated process water or wastewater treatment, and to regulated stormwater. For the purposes of the TMDL and consistent with implementation of the National Pollutant Discharge Elimination System (NPDES) Municipal Separate Storm Sewer System Discharge Permit (MS4), stormwater runoff from MS4 areas is considered a point source contribution.

Anne Arundel County's current MS4 permit (11-DP-3316, MD0068306) issued in its final form by the MDE in February of 2014 requires development of restoration plans for each stormwater WLA approved by EPA prior to the effective date of the permit (permit section IV.E.2.b). This plan satisfies this permit requirement and provides the loading target, recommended management measures, load reduction estimates, schedule, milestones, cost estimates and funding sources, and the tracking and monitoring approaches to meet the stormwater WLA (SW-WLA).

It is noted that TMDL restoration plans are an important first step. The MS4 permit calls for an iterative and adaptive plan for implementation. If new methods of stormwater treatment are identified, or better approaches to source control are found, the plans can be extended and updated to take the changes into account. Similarly, if some elements of the plans are not as successful as expected, adaptations and improvements will be incorporated in future updates.

This plan demonstrates that Anne Arundel County met its sediment SW-WLA for the Upper Patuxent during 2015. The strategies proposed will provide further treatment to reduce current sediment loads from the urban stormwater sector.

1.2 TMDL Allocated and Planned Loads Summary

The following Restoration Plan only addresses loads allocated to Anne Arundel County NPDES regulated stormwater point source sediment. Additional SW-WLAs for the Upper Patuxent Watershed TMDL assigned to Howard and Prince George's counties, Phase II jurisdictions, Maryland State Highway Administration, and other NPDES regulated stormwater are not the responsibility of Anne Arundel County and will not be addressed in this plan.

The Upper Patuxent Watershed TMDL requires an 11.4% reduction of sediment loads from 2005 baseline levels to achieve the target SW-WLA for Anne Arundel County NPDES regulated stormwater. A planning horizon of 2025 was used as the date to achieve these load reductions with 2017 proposed as a milestone to assess progress.

Based on MDE guidance, growth in the stormwater load since the TMDL baseline year was not accounted for in the analysis conducted in the development of this plan. Local TMDLs are considered met, from a planning perspective, when the load reductions associated with 2015 restoration progress coupled with the planned restoration load reductions exceed the load reduction required.

This section of the plan, including Table 1, provides a concise summary of the loads and reductions at important timeline intervals including the 2005 baseline, 2015 progress, 2017 milestone and 2025 final planning intervals. These terms and dates are used throughout the plan and explained in more detail in the following sections. They are presented here to assist the reader in understanding the definitions of each, how they were derived, and to provide an overall summary demonstrating the percent reduction required and percent reduction achieved through full implementation of this plan. Sediment loads and wasteload allocations are presented as tons/year in the local TMDL but will be discussed as lbs/year in this restoration plan.

- **2005 Baseline Loads:** Baseline levels (i.e., land use loads with baseline BMPs) from 2005 conditions in the Upper Patuxent watershed using the Chesapeake Bay Facility Assessment Scenario Tool (BayFAST) Chesapeake Bay Program Phase 5.3.2 (CBP P5.3.2) model. Baseline loads were used to calculate the stormwater allocated sediment loads, or SW-WLA.
- **2015 Progress Loads and Reductions:** Progress loads and load reductions achieved from restoration best management practice (BMP) implementation through 2015. The 2015 Progress Loads are calculated from the 2005 Baseline Loads by the following calculation: 2005 Baseline – 2015 Progress Reduction.
- **2017 Interim Milestone Goal Loads and Planned Loads and Reductions:** Planned 2017 loads and reductions will result from implementation of strategies through 2017. The 2017 Planned Loads are calculated from the 2005 Baseline Loads by the following calculation: 2005 Baseline – 2017 Planned Reduction.
- **2025 Allocated Load:** Allocated loads are calculated from the 2005 baseline levels, calibrated to CBP P5.3.2 as noted above, using the following calculation: 2005 Baseline – (2005 Baseline x 0.114)

- **2025 Planned Loads and Planned Reductions:** Loads and reductions that will result from implementation of this plan. The 2025 Planned Loads are calculated from the 2005 Baseline Loads by the following calculation: 2005 Baseline – 2025 Planned Reduction.

Table 1: Upper Patuxent River Local TMDL Allocated and Planned Loads

	Sediment (tons/year)	Sediment (lbs/year)
2005 Baseline Loads	243	485,565
2015 Progress Loads	212	423,955
2015 Progress Reductions	31	62,610
2017 Planned Loads*	203	406,880
2017 Planned Reductions	39	78,685
2025 TMDL Allocated Loads	215	430,211
2025 Planned Loads*	176	352,442
2025 Planned Reductions	67	133,123
Required Percent Reduction	11.4%	11.4%
Planned Percent Reduction Achieved	27.4%	27.4%

*2017 and 2025 planned loads are calculated by subtracting planned restoration sediment reductions from the 2005 Baseline Load. It is assumed that all new development will be treated with SW to the MEP implementation to achieve 90% sediment removal.

1.3 Restoration Plan Elements and Structure

This plan is developed within the context of on-going watershed management planning, restoration, and resource protection being conducted by Anne Arundel County. The County initiated comprehensive watershed assessment and management plans in 2000 and has currently completed plans for seven of the 12 major watersheds, including the Upper Patuxent which was completed in 2008. The TMDL regulation uses the term ‘Patuxent River Upper’; however, it references the same geography included in Anne Arundel County’s 2008 Upper Patuxent watershed plan and this restoration plan. The County also prepared a Phase II Watershed Implementation Plan (WIP) in 2012 in response to requirements set forth in the Chesapeake Bay TMDL for nitrogen, phosphorus and sediment. Information synthesized and incorporated into this plan for the Upper Patuxent watershed draws upon these sources with updates and additions where necessary to meet the specific goals of the SW-WLA. The TMDL analyses and reports developed by MDE are also referenced. These primary sources include:

- Upper Patuxent River Watershed Overall Summary Recommendation Report (Anne Arundel County, 2008)
- Chesapeake Bay TMDL, Phase II Watershed Implementation Plan, Final (Anne Arundel County, 2012)
- Total Maximum Daily Load of Sediment in the Patuxent River Upper Watershed, Anne Arundel, Howard, and Prince George’s Counties, Maryland (MDE, 2011)

MDE has prepared several guidance documents to assist municipalities with preparation of TMDL restoration plans. This plan is developed following the guidance detailed in the following documents with modifications as necessary:

- General Guidance for Developing a Stormwater Wasteload Allocation (SW-WLA) Implementation Plan (MDE, May 2014)
- Guidance for Using the Maryland Assessment Scenario Tool to Develop Stormwater Wasteload Allocation Implementation Plans for Local Nitrogen, Phosphorus, and Sediment TMDLs (MDE, June 2014)
- Guidance for Developing Stormwater Wasteload Allocation Implementation Plans for Nutrient and Sediment Total Maximum Daily Loads (MDE, November 2014)
- Accounting for Stormwater Wasteload Allocations and Impervious Acres Treated (MDE, August 2014)

The Upper Patuxent plan has been prepared in accordance with the EPA's nine essential elements for watershed planning. These elements, commonly called the 'a through i criteria' are important for the creation of thorough, robust, and meaningful watershed plans and incorporation of these elements is of particular importance when seeking implementation funding. The EPA has clearly stated that to ensure that Section 319 (the EPA Nonpoint Source Management Program) funded projects make progress towards restoring waters impaired by nonpoint source pollution, watershed-based plans that are developed or implemented with Section 319 funds to address 303(d)-listed waters must include at least the nine elements.

The Upper Patuxent watershed restoration plan is organized based on these elements. A modification to the order has been incorporated such that element c., a description of the management measures, is included before element b., the expected load reductions. We feel this modified approach is easier to follow. The letters (a. through i.) are included in the headers of the plan's major sections to indicate to the reader the elements included in that section. The planning elements are:

- a. An identification of the causes and sources that will need to be controlled to achieve the load reductions estimated in the plan and to achieve any other watershed goals identified in the plan, as discussed in item (b) immediately below. (Section 3)
- b. An estimate of the load reductions expected for the management measures described under paragraph (c) below, recognizing the natural variability and the difficulty in precisely predicting the performance of management measures over time. (Section 5)
- c. A description of the management measures that will need to be implemented to achieve the load reductions estimated under paragraph (b) above as well as to achieve other watershed goals identified in the plan, and an identification of the critical areas in which those measures will be needed to implement this plan. (Section 4)
- d. An estimate of the amount of technical and financial assistance needed, associated costs, and/or the sources and authorities that will be relied upon, to implement this plan. (Section 6)
- e. An information/education component that will be used to enhance public understanding of the project and encourage their early and continued participation in selecting, designing, and implementing the recommended management measures. (Section 7)
- f. A schedule for implementing the management measures identified in this plan that is reasonably expeditious. (Section 8)
- g. A description of interim, measurable milestones for determining whether management measures or other control actions are being implemented. (Section 8)

- h. A set of criteria that can be used to determine whether loading reductions are being achieved over time and substantial progress is being made towards attaining water quality standards and, if not, the criteria for determining whether the plan needs to be revised. (Section 9)
- i. A monitoring component to evaluate the effectiveness of the implementation efforts over time, measured against the criteria established under item (h) immediately above. (Section 10)

The outcomes of the planning effort are to provide guidance for the strategic implementation of watershed protection and restoration efforts that will advance progress toward meeting Anne Arundel County's local TMDLs pollutant loading allocations, and ultimately meeting water quality standards. Successful implementation of the plan will lead to improvements in local watershed conditions and aquatic health.

2 Watershed Characteristics

2.1 Watershed Delineation

The Upper Patuxent is one of 12 major watersheds in Anne Arundel County, Maryland, and is situated in the western portion of the County (Figure 1). The watershed shares political boundaries with Prince George's County along the Patuxent River and a smaller portion of the watershed is shared with Howard County. The Upper Patuxent watershed is a part of the Chesapeake Bay watershed with the Patuxent River mainstem discharging directing into the Chesapeake Bay.

2.2 Upper Patuxent

The Upper Patuxent watershed is approximately 22,420 acres (35.0 square miles) in area and contains approximately 90 total perennial miles of stream reaches. The watershed includes several named streams including Stocketts Run, Davidsonville Branch, Ropers Branch, and the mainstem of the Upper Patuxent River. These named streams are distributed among 19 subwatersheds, as shown below in Table 2 and on Figure 2. These subwatersheds were used as planning units for the watershed assessment and management plan completed for this watershed by the County in 2008. Although the average subwatershed size is 1,180 acres, the subwatersheds range in size from 339 acres in UP1 to 2,833 acres in UP7. The channel length in each subwatershed also varies similarly.

The Upper Patuxent watershed is largely undeveloped; however, Davidsonville and the outer suburbs of Crofton are located on the eastern boundary of the watershed. A large portion of the Patuxent Wildlife Refuge, a federal property owned and operated by the Fish and Wildlife Service of the U.S. Department of Interior, is located in the northern section of the watershed (Figure 2).

Table 2: Upper Patuxent River Watershed Drainage Area and Perennial Stream Miles

Subwatershed Code	Subwatershed Name	Drainage Area (Acres)	Drainage Area (Square Miles)	Stream Miles
UP1	Upper Patuxent River Mainstem	339	0.5	0.7
UP2	Upper Patuxent River Mainstem	854	1.3	0.3
UP3	Upper Patuxent River Mainstem	492	0.8	0.0

Subwatershed Code	Subwatershed Name	Drainage Area (Acres)	Drainage Area (Square Miles)	Stream Miles
UP4	Upper Patuxent River Mainstem	674	1.1	0.4
UP5	Upper Patuxent River Mainstem	384	0.6	0.4
UP6	Upper Patuxent River Mainstem	1,548	2.4	4.6
UP7	Upper Patuxent River Mainstem	2,833	4.4	3.3
UP8	Upper Patuxent River Mainstem	1,261	2.0	5.2
UP9	Ropers Branch	638	1.0	3.0
UPA	Upper Patuxent River Mainstem	1,163	1.8	4.8
UPB	Upper Patuxent River Mainstem	2,641	4.1	7.7
UPC	Upper Patuxent River Mainstem	974	1.5	3.5
UPD	King's Branch	1,728	2.7	8.3
UPE	Upper Patuxent River Mainstem	813	1.3	5.1
UPF	Davidsonville Branch	1,428	2.2	9.2
UPG	Stocketts Run 1	917	1.4	5.9
UPH	Stocketts Run 2	1,366	2.1	10.0
UPI	Stocketts Run 3	1,271	2.0	9.4
UPJ	Stocketts Run 4	1,090	1.7	7.9
Upper Patuxent River Total		22,417	35.0	89.8

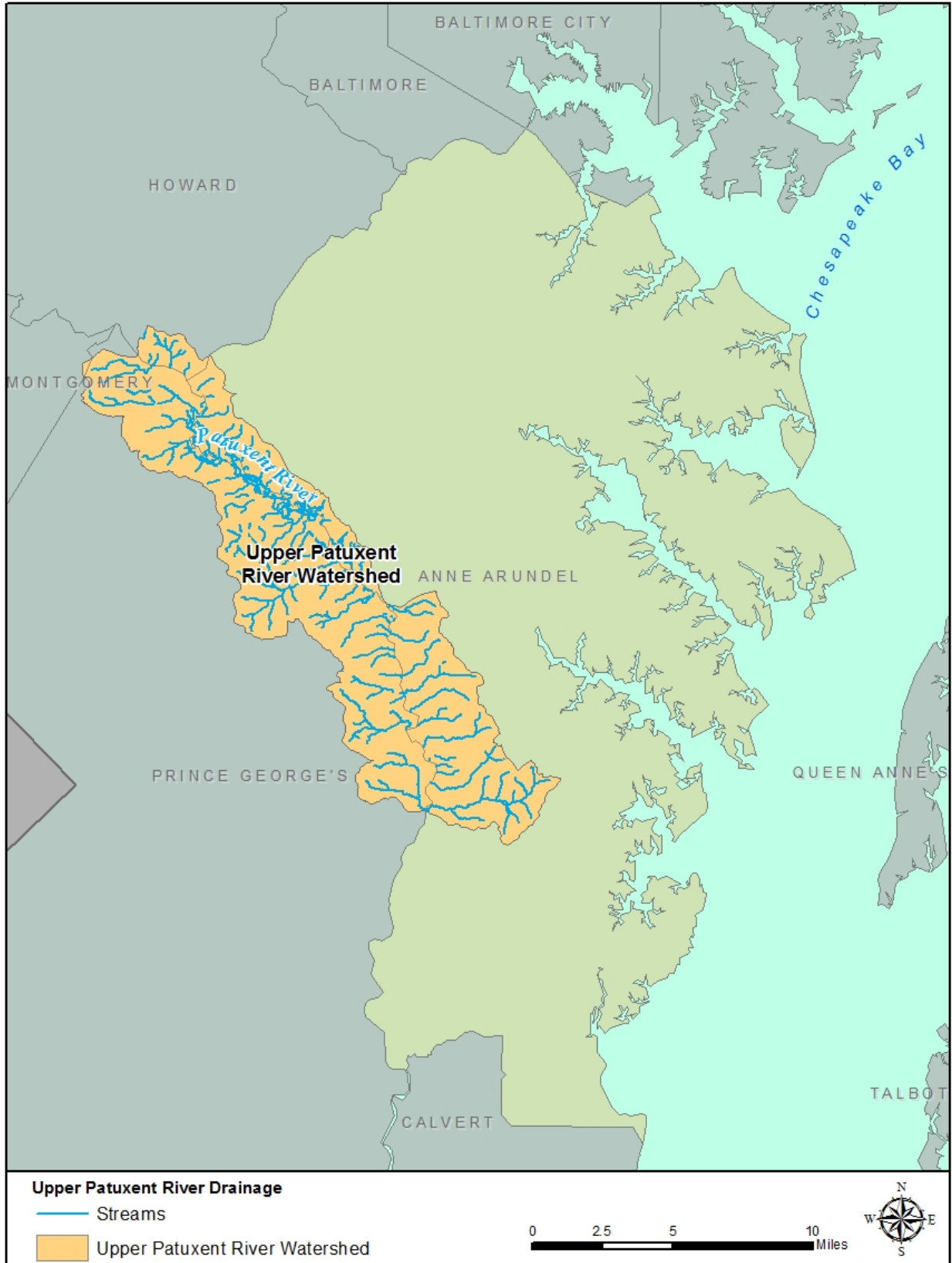


Figure 1: Upper Patuxent River Watershed

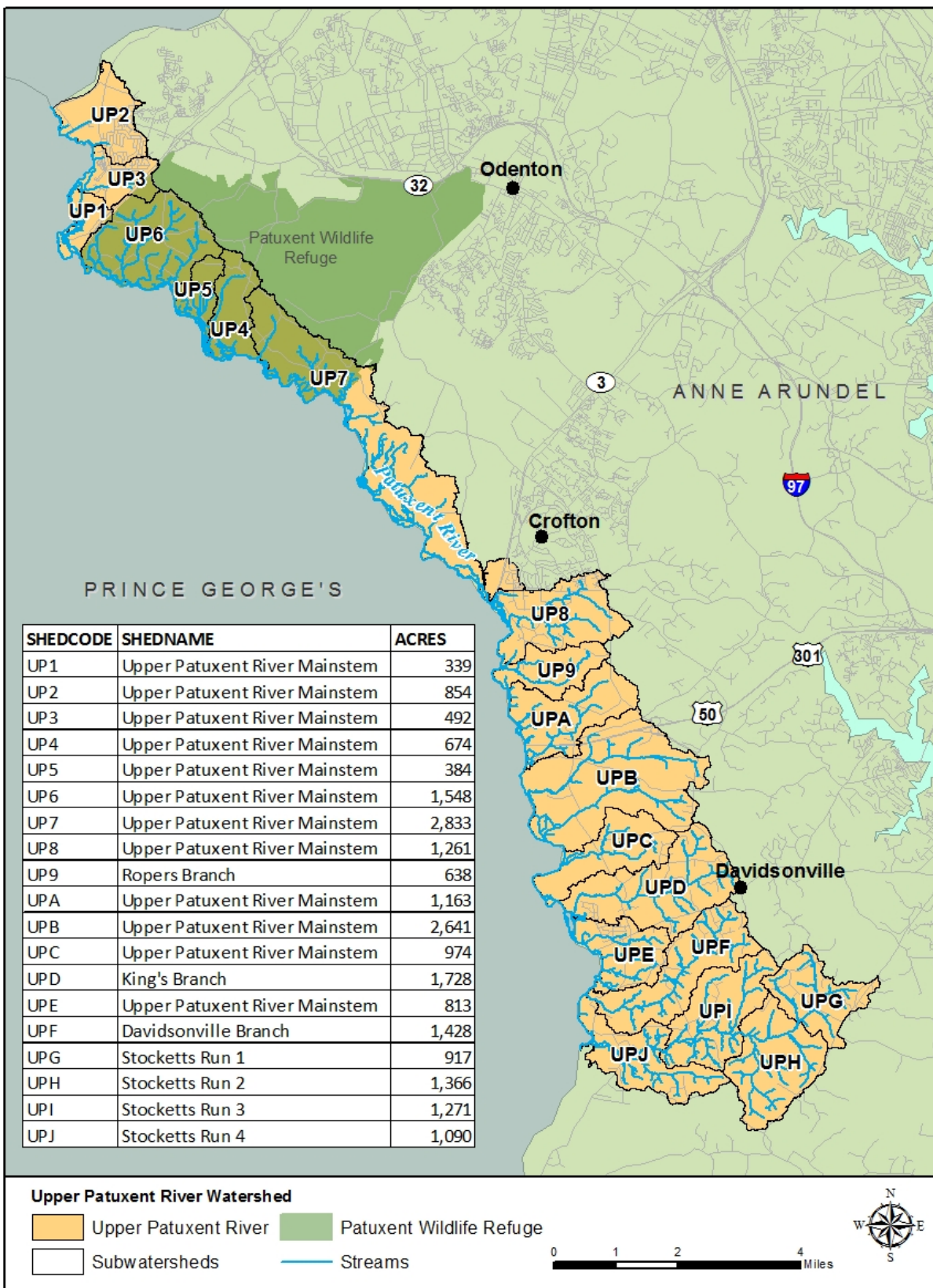


Figure 2: Upper Patuxent River Subwatershed Location

2.3 Land Use/Land Cover

The type and density of various land uses can have a dramatic effect on water quality and stream habitat. Forested areas slow stormwater flow and allow water to gradually seep into soils and drain into streams. Vegetation and soils bind nutrients and pollutants found within stormwater—improving water quality as it infiltrates the ground. Developed areas, with a high percentage of impervious surfaces (buildings, paved roads, parking lots, etc.), do not reduce either the volume or flow of stormwater—increasing the amount of pollutants entering streams. Increased stormflow affects stream habitat negatively by increasing bank erosion and decreasing instream and riparian habitat. Agricultural land, if managed incorrectly, can also impair streams with increases nutrients and bacteria.

See Figure 3 for aerial imagery of the Upper Patuxent watershed. Land use / land cover (LULC) data from the Anne Arundel County Office of Information Technology (2011) is presented in Figure 4. Data presented in the figures below were used to characterize the watershed and show potential pollution sources. These LULC data were not used in the calculations of loads and load reduction, which were based instead on the land-river segment scale from the Chesapeake Bay Program Partnership Watershed Model.

2.3.1 Existing Land Use/Land Cover

According to 2011 LULC data (Table 3), the largest category in the Upper Patuxent is forested land, or woods (51.7%) residential 2-acre (12.5%). Developed land in the watershed accounts for 24.2% and largely consists of residential areas (17.8%), transportation (2.5%), and commercial (2.2%).

Table 3: 2011 Land Use / Land Cover

Land Use / Land Cover	Acres	Percent of Watershed
Airport	14	0.1%
Commercial	503	2.2%
Forested Wetland	110	0.5%
Industrial	76	0.3%
Open Space	2,134	9.5%
Open Wetland	55	0.2%
Pasture/Hay	1,043	4.7%
Residential 1/2-acre	203	0.9%
Residential 1/4-acre	360	1.6%
Residential 1/8-acre	182	0.8%
Residential 1-acre	458	2.0%
Residential 2-acre	2,793	12.5%
Row Crops	1,894	8.4%
Transportation	560	2.5%
Utility	275	1.2%
Water	162	0.7%
Woods	11,595	51.7%
Total	22,417	100.0%

2.3.2 Impervious Surfaces

Impervious surfaces concentrate stormwater runoff, accelerating flow rates and directing stormwater to the receiving stream. This accelerated, concentrated runoff can cause stream erosion and habitat degradation. Runoff from impervious surfaces picks up and washes off pollutants and is usually more polluted than runoff generated from pervious areas. In general, undeveloped watersheds with small amounts of impervious cover are more likely to have better water quality in local streams than urbanized watersheds with greater amounts of impervious cover. Impervious cover is a primary factor when determining pollutant characteristics and loadings in stormwater runoff.

The degree of imperviousness in a watershed also affects aquatic life. There is a strong relationship between watershed impervious cover and the decline of a suite of stream indicators. As imperviousness increases the potential stream quality decreases with most research suggesting that stream quality begins to decline at or around 10 percent imperviousness (Schueler, 1994; CWP, 2003). However, there is considerable variability in the response of stream indicators to impervious cover observed from 5 to 20 percent imperviousness due to historical effects, watershed management, riparian width and vegetative protection, co-occurrence of stressors, and natural biological variation. Because of this variability, one cannot conclude that streams draining low impervious cover will automatically have good habitat conditions and a high quality aquatic life.

Impervious surfaces make up 5.5% of the overall Upper Patuxent drainage (Table 4; impervious surfaces data obtained from Anne Arundel County Office of Information Technology - 2011). Impervious surface is highest in areas near MD 295 and Laurel Park in addition to residential areas in the outer suburbs of Crofton and Davidsonville.

Table 4: Upper Patuxent River Watershed Percent Impervious Cover

Subwatershed Code	Subwatershed Name	% Impervious Cover
UP1	Upper Patuxent River Mainstem	6.1%
UP2	Upper Patuxent River Mainstem	27.6%
UP3	Upper Patuxent River Mainstem	15.1%
UP4	Upper Patuxent River Mainstem	0.4%
UP5	Upper Patuxent River Mainstem	0.0%
UP6	Upper Patuxent River Mainstem	0.2%
UP7	Upper Patuxent River Mainstem	1.0%
UP8	Upper Patuxent River Mainstem	14.7%
UP9	Ropers Branch	1.1%

Subwatershed Code	Subwatershed Name	% Impervious Cover
UPA	Upper Patuxent River Mainstem	3.4%
UPB	Upper Patuxent River Mainstem	5.5%
UPC	Upper Patuxent River Mainstem	5.3%
UPD	King's Branch	7.3%
UPE	Upper Patuxent River Mainstem	7.5%
UPF	Davidsonville Branch	4.5%
UPG	Stocketts Run 1	6.3%
UPH	Stocketts Run 2	3.0%
UPI	Stocketts Run 3	3.4%
UPJ	Stocketts Run 4	3.6%
Upper Patuxent River Total		5.5%

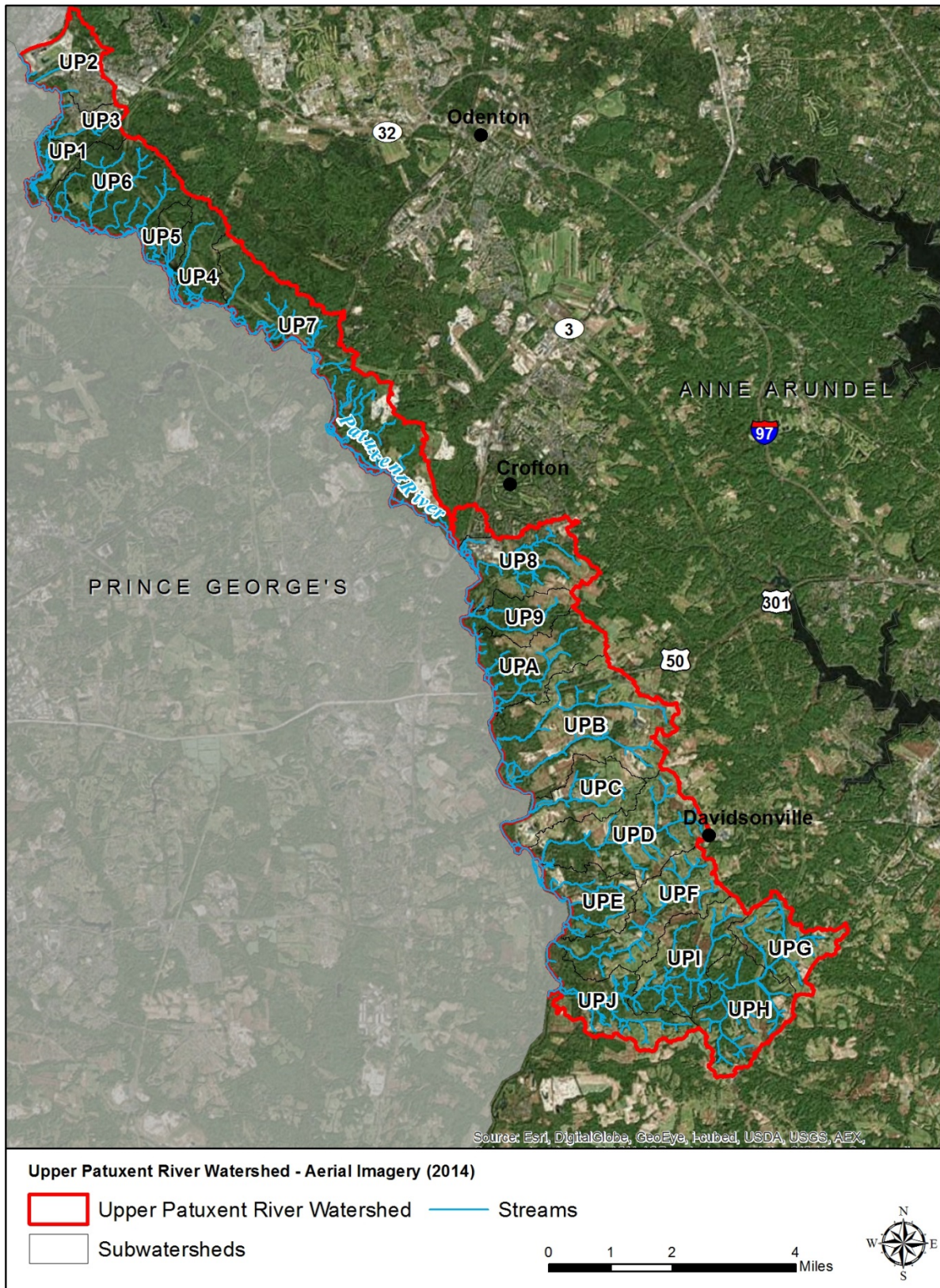


Figure 3: Upper Patuxent River Watershed Aerial Imagery (2014)

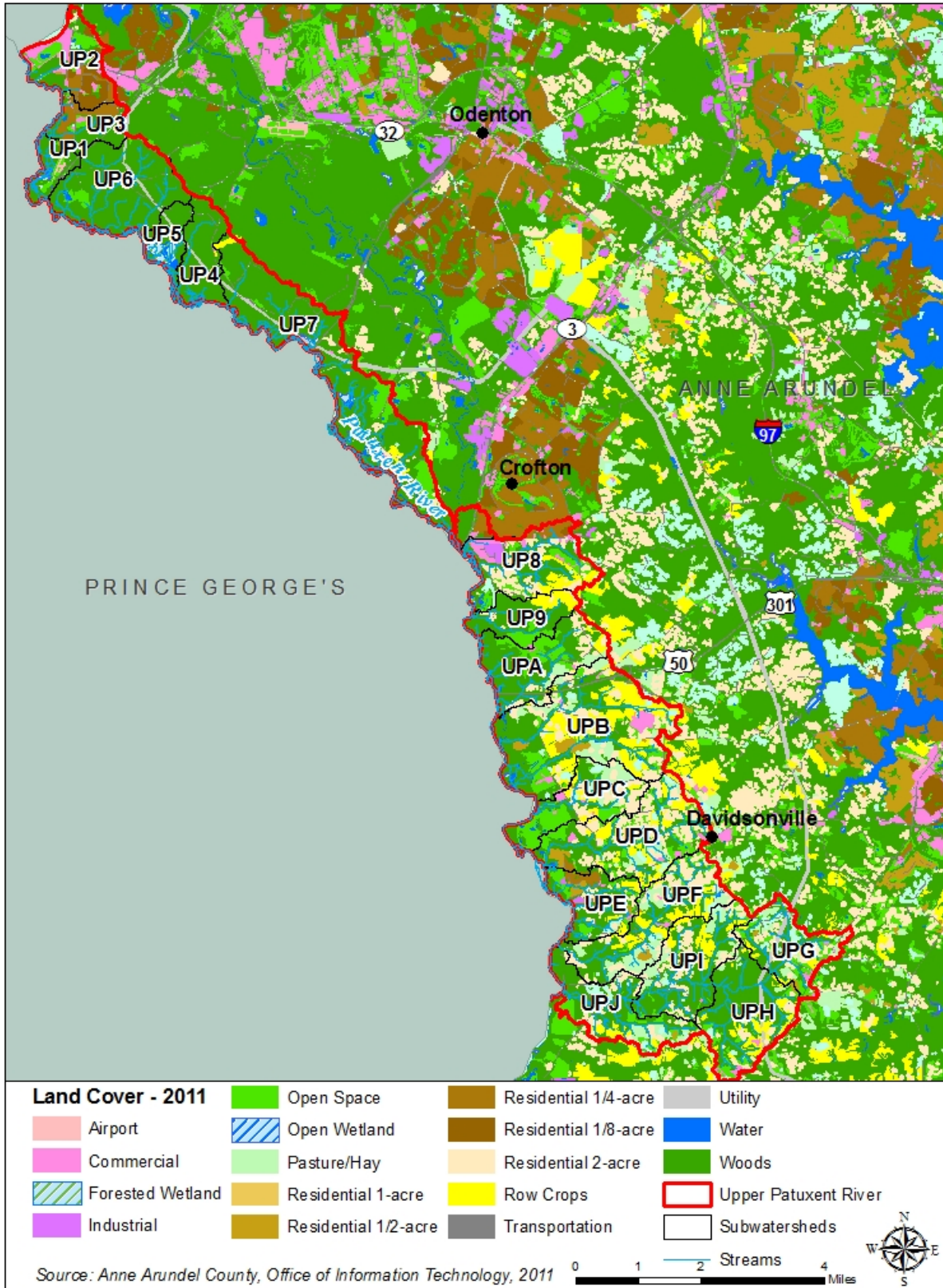


Figure 4: Upper Patuxent River Watershed Land Cover (2011)

2.4 Water Quality

2.4.1 Use Designations

According to water quality standards established by MDE in the Code of Maryland Regulations (COMAR) 26.08.02.03-.03 - Water Quality, Upper Patuxent is classified as Use I waters which are designated to support water contact recreation, and protection of non-tidal warmwater aquatic life. Designations include recreation; industrial and agricultural water supply; and fish, aquatic life, and wildlife (Table 5).

Table 5: Use Designations of the Upper Patuxent River

Designated Uses	Upper Patuxent
Growth and propagation of fish (not trout), other aquatic life and wildlife	X
Water contact sports	X
Leisure activities involving direct contact with surface water	X
Fishing	X
Agricultural water supply	X
Industrial water supply	X
Propagation and harvesting of shellfish	-
Seasonal migratory fish spawning and nursery use	-
Seasonal shallow-water submerged aquatic vegetation use	-
Open-water fish and shellfish use	-
Seasonal deep-water fish and shellfish use	-
Seasonal deep-channel refuge use	-
Growth and propagation of trout	-
Capable of supporting adult trout for a put and take fishery	-
Public water supply	-

Source: http://www.mde.state.md.us/programs/Water/TMDL/Water%20Quality%20Standards/Pages/programs/waterprograms/tmdl/wqstandards/wqs_designated_uses.aspx

2.4.2 303(d) Impairments

According to Maryland’s final 2012 and draft 2014 303(d) list of impaired waters (MDE, 2012a; MDE, 2014a), several segments within the Upper Patuxent watershed are listed for water quality impairments.

The Upper Patuxent watershed contains three Category 4a stream segments which include those waters that are not meeting their use designation but for which a TMDL has been developed to address the impairments. Category 4a waters include the entire watershed listed for sediment, the lower portion of the watershed listed for fecal bacteria (*Escherichia coli*), and Cash Lake (Prince George’s County) listed for mercury in fish tissue.

Category 5 waters for the Upper Patuxent watershed, which include those waters that are not meeting their use designation and require a TMDL, include the entire watershed for chlorides and sulfates. These listings were added in 2014 and replace the 2006 category 5 biological listing for “cause unknown.”

2.4.3 TMDLs

Total Maximum Daily Loads (TMDLs) are established for waterbodies on Maryland’s 303(d) integrated list of impaired waterbodies to set pollutant limits to achieve attainment of the designated use. For each

combination of waterbody and pollutant, the State must estimate the maximum allowable pollutant load, or TMDL, that the waterbody can receive and still meet water quality standards. TMDLs are required by Clean Water Act.

Category 4a of the 303(d) list describes impaired waters with a TMDL or other reduction measure in place. Category 5 lists impaired waters in need of a TMDL. Listings for chlorides and sulfates in the Upper Patuxent are currently in need of a TMDL.

The Upper Patuxent currently has three final TMDLs completed - one for sediment (approved 2011), a second for *Escherichia coli* (approved 2011), and a third for mercury in fish tissue (approved 2011). This Restoration Plan focuses on implementing strategies to address the sediment TMDL which requires a 11.4% reduction of Anne Arundel County NPDES regulated stormwater point source sediment.

In addition to local TMDLs in the Upper Patuxent, the County must also meet WLAs allocated from the *Chesapeake Bay Total Maximum Daily Loads for Nitrogen, Phosphorus, and Sediment* (USEPA, 2010). The Bay TMDL is a result of requirements under the CWA to meet water quality standards and executive order 13508 signed by President Barack Obama in 2009 that put a renewed emphasis and focus on the Chesapeake Bay. The local sediment TMDL for the Upper Patuxent is more geographically specific than the Bay-wide allocated loads assigned in the Bay TMDL. However, all load reductions achieved from implementation efforts described in this plan will help support the County's Bay TMDL goals.

2.4.4 NPDES

Section 402(p) of the Clean Water Act required the EPA to add Municipal Separate Storm Sewer System (MS4) discharges to the NPDES permit program. In 2002, EPA directed permit writers to include WLA requirements in NPDES permits, including those for MS4 discharges. Anne Arundel County holds a Phase I – Large Jurisdiction (greater than 250,000 population) MS4 permit (11-DP-3316, MD0068306) issued by the MDE. The County's first generation permit was issued in 1993. The current fourth generation permit was issued in February of 2014.

TMDL Permit Requirements

The objective of this plan is to meet the County's MS4 NPDES permit requirement to develop restoration plans for local TMDLs per permit condition IV.E.2.b. Plans must be developed within the first year of permit issuance. Anne Arundel County's final permit was issued on February 12, 2014 therefore the restoration plans must be complete by February 11, 2015.

The permit states the County must submit "...a restoration plan for each stormwater Waste Load Allocation (WLA) approved by EPA prior to the effective date of the permit." For each WLA, the County is required to:

PART IV. Standard Permit Conditions

E. Restoration Plans and Total Maximum Daily Loads

2. Restoration Plans

- b. Within one year of permit issuance, Anne Arundel County shall submit to MDE for approval a restoration plan for each stormwater WLA approved by EPA prior to the effective date of the permit. The County shall submit restoration plans for subsequent TMDL WLAs within one year of

EPA approval. Upon approval by MDE, these restoration plans will be enforceable under this permit. As part of the restoration plans, Anne Arundel County shall:

- i. Include the final date for meeting applicable WLAs and a detailed schedule for implementing all structural and nonstructural water quality improvement projects, enhanced stormwater management programs, and alternative stormwater control initiatives necessary for meeting applicable WLAs;
- ii. Provide detailed cost estimates for individual projects, programs, controls, and plan implementation;
- iii. Evaluate and track the implementation of restoration plans through monitoring or modeling to document the progress toward meeting established benchmarks, deadlines, and stormwater WLAs; and
- iv. Develop an ongoing, iterative process that continuously implements structural and nonstructural restoration projects, program enhancements, new and additional programs, and alternative BMPs where EPA approved TMDL stormwater WLAs are not being met according to the benchmarks and deadlines established as part of the County's watershed assessments.

Further, the permit requires continual outreach to the public regarding the development of its watershed assessments and restoration plans and requires public participation in the TMDL process (permit section IV.E.3.a-d).

The permit requires an annual progress report presenting the assessment of the NPDES stormwater program based on the fiscal year. A TMDL assessment report to include complete descriptions of the analytical methodology used to evaluate the effectiveness of the County's restoration plans and how these plans are working to achieve compliance with EPA approved TMDLs is a component of the annual report. The assessment will include: estimated net change in pollutant load reductions from water quality improvement projects; a comparison of the net change to targets, deadlines, and applicable WLAs; cost data for completed projects; cost estimates for planned projects; and a description of a plan for implementing additional actions if targets, deadlines, and WLAs are not being met (permit section IV.E.4.a-e).

Impervious Surface Permit Requirements

The County's permit requires implementation of restoration efforts for 20% of the County's impervious surface area that has not already been restored to the maximum extent practicable (MEP) (permit section (IV.E.2.a). Though projects and strategies outlined in this plan will certainly add treatment of impervious surfaces, accounting for impervious treatment is not included in this report.

3 Causes and Sources of Impairment (a)

3.1 Impairments

Elevated levels of sediment currently impair the Upper Patuxent watershed as evident through the 303(d) listings and local TMDL requirement. Sediment, both from upland and in-stream sources, can impact in-stream habitat by covering and filling gravelly and rocky substrate, which is a preferred substrate habitat for some aquatic organisms (fish and benthic community) and necessary for some fish species for spawning. Finer clays, silts and sands associated with sediment as a pollutant are more

mobile and transient and provide less liveable space for more sensitive benthic macroinvertebrate species by filling the interstitial spaces between larger substrate particles in the channel bottom. Increases in sediment loads in channels that cannot adequately transport the load can lead to deposition and aggrading streams. These factors often negatively impact channel flow, causing additional erosion and increases in flooding, particularly if road crossing capacity is limited by sediment accumulation. Suspended sediment in the water column may limit light penetration and prohibit healthy propagation of algae and submerged aquatic vegetation. Suspended sediments can cause gill abrasion in fish and can limit clarity which impacts aquatic species that rely on sight for feeding.

3.2 Sources

The majority of sediment loads in the Upper Patuxent originate from urban stormwater runoff from development and in-stream sources related to channel erosion.

3.2.1 Urban Stormwater Runoff

The contribution of urban stormwater to sediment loading was analyzed in the Upper Patuxent River Watershed. Figure 5 presents the annual total suspended solids runoff load as the relative quantity of sediment contributed from each subwatershed (i.e., lowest to highest). The water quality model used for the assessment was based on EPA's Simple Method (Schueler, 1987) and PLOAD models (EPA, 2001) using event mean concentrations (EMCs) for each LULC type. The results presented here are only the sediment associated with runoff, and do not reflect in-stream sources. The most significant contributing LULC categories related to urban stormwater in terms of loading rates include airport, transportation, and commercial and industrial areas. Residential development, while a lower loading rate, makes up the largest portion of developed land in the watershed (17.8%) and is therefore also a significant contributor.

Subwatersheds contributing the lowest amount of existing sediment loads include UP1, UP4, UP5, UP6, and UP9. Subwatersheds contributing the highest amount of existing sediment loads include UP2 and UPB and to a lesser extent, subwatersheds UP7 and UP8. Management measures targeted in subwatersheds with high existing sediment loads will be the priority of this restoration plan to ensure required reductions are achieved and maintained.

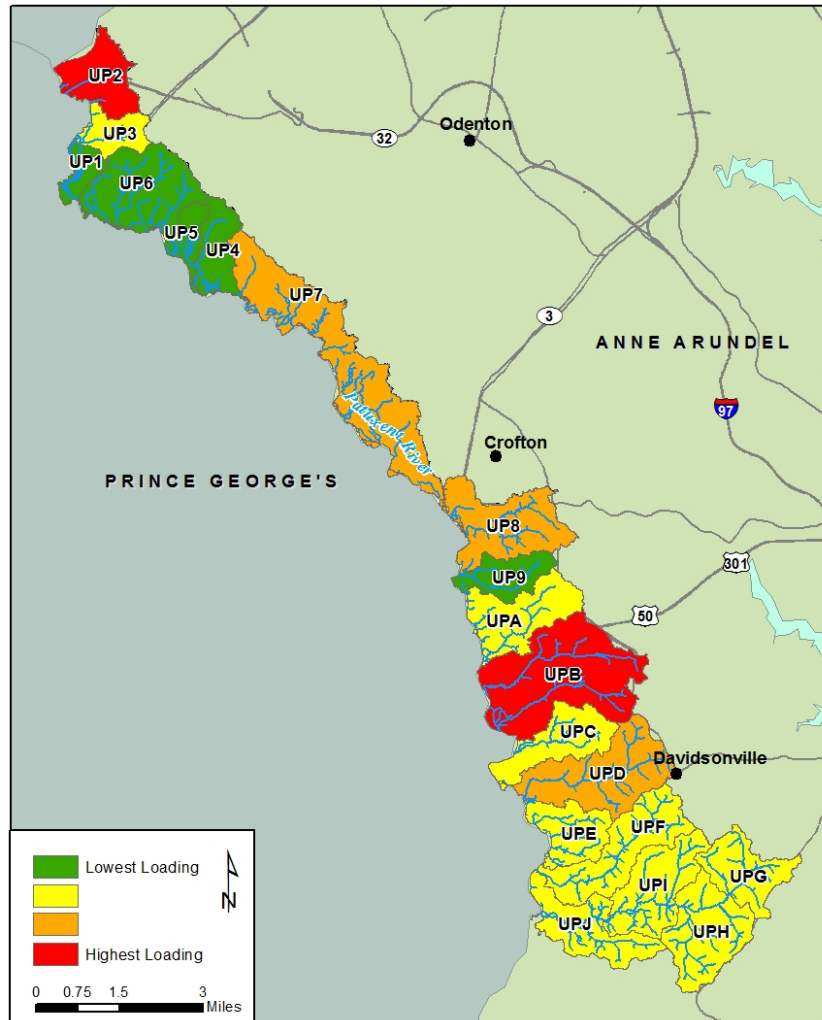


Figure 5: Total Suspended Solids Load from Runoff Based on Existing Conditions - Includes BMP Reductions

3.2.2 In-stream Sources

Although channel bed and bank erosion occurs naturally as streams work to maintain a state of dynamic equilibrium, excessive erosion can occur due to increased stream velocities associated with development activities that increase imperviousness within the watershed. Channel erosion can deliver excessive pollutants, such as sediment and phosphorus, downstream, where water quality can be impacted and important habitat for fish spawning and benthic invertebrates can be smothered. Excessive erosion can also threaten the stability of other nearby built infrastructure. The Biological Stressor Identification Analysis (BSID; MDE, 2010) for the Upper Patuxent has determined that biological communities in this watershed are likely degraded due to flow/sediment related stressors. These stressors often result from altered hydrology and increased runoff from impervious area, specifically from channel erosion and subsequent elevated suspended sediment transport through the watershed. Thus, suspended sediment was identified as a probable cause and confirmed the Category 5 listing for total suspended sediment as an impairing substance in this watershed.

Approximately 90 miles of streams were assessed, and characterized for the Upper Patuxent River Watershed Overall Summary Recommendation Report (Anne Arundel County, 2008). Collected data

included stream classifications, physical habitat condition assessment, inventory of infrastructure and environmental features, habitat scores, channel geomorphology, road crossing flood potential, bioassessments, and aquatic resource indicators. Within each perennial reach, channel erosion was assessed and scored based on severity. A score of 5 was considered Moderate impact, a score of 7 was considered Severe, and a score of 10 was considered an Extreme condition. A total of 100 erosion locations impacting approximately 6,820 linear feet of stream reaches were cataloged in the Upper Patuxent with the majority of points scored as moderate (90%) erosion and the remaining 10% of sites scored as severe erosion (Table 6 and Table 7).

Table 6: Erosion Inventory and Severity per Subwatershed (Anne Arundel County, 2008)

Subwatershed and stream miles		Number of Erosion Impacts			Total
		5	7	10	
UP1	0.7				0
UP2	0.3				0
UP3	0.0				0
UP4	0.4				0
UP5	0.4				0
UP6	4.6	9			9
UP7	3.3	5			5
UP8	5.2	7			7
UP9	3.0	13			13
UPA	4.8	9	1		10
UPB	7.7	12			12
UPC	3.5	3			3
UPD	8.3	13			13
UPE	5.1	2	1		3
UPF	9.2	10	4		14
UPG	5.9	2			2
UPH	10.0				0
UPI	9.4	5	4		9
UPJ	7.9				0
Total number per rating		90	10	0	
Total number per type		100			

Gray =<5 sites

Green = 5-10 sites

Yellow = 11-20 sites

Orange = 21-50 sites

Table 7: Linear Feet of Erosion per Subwatershed

Subwatershed	Erosion Impacts and Linear Feet			Total Linear Feet
	5	7	10	
UP1	0	0	0	0
UP2	0	0	0	0
UP3	0	0	0	0
UP4	0	0	0	0
UP5	0	0	0	0
UP6	460	0	0	460
UP7	120	0	0	120
UP8	525	0	0	525
UP9	1,270	0	0	1,270
UPA	445	40	0	485
UPB	625	0	0	625
UPC	57	0	0	57
UPD	1,110	0	0	1,110
UPE	45	200	0	245
UPF	531	500	0	1,031
UPG	55	0	0	55
UPH	0	0	0	0
UPI	370	470	0	840
UPJ	0	0	0	0
Total	5,613	1,210	0	6,823

An assessment of channel geomorphology utilizing Rosgen Level I geomorphic classifications was also administered for each single-threaded, perennial reach throughout the watershed as part of the Upper Patuxent River Watershed Overall Recommendation Summary (Anne Arundel County, 2008). An assessment of channel geomorphology is useful to better understand the stability of a stream and its associated behaviors including channel entrenchment. The Rosgen classification system has four levels. The Level I classification is a geomorphic characterization that groups streams as Types A through G based on aspects of channel geometry, including water surface slope, entrenchment, width/depth ratio, and sinuosity.

Due to the narrow and long shape and size of the Upper Patuxent River Watershed, the subwatersheds were grouped into two geographic sections, northern and southern, with the sections divided by Route 3 near Crofton. Nearly half (43%) of the assessed perennial streams in the northern and southern sections of the Upper Patuxent River Watershed were Type B channels (43% and 42%, respectively), which are very stable, moderate gradient channels with low sinuosity and low erosion rates. Eighteen percent of streams and 24% of streams in the northern and southern sections, respectively, were Type C channels, which exhibit a well-developed floodplain, higher sinuosity and susceptibility to destabilization when flow regimes are altered. The remainder of streams assessed in both the northern and southern sections of Upper Patuxent were Type F and Type G channels, which are generally low gradient, entrenched channels with high erosion rates.

3.3 Anticipated Growth

Future urban sector growth and the anticipated increase in urban loads that may result are expected to be controlled by two elements: stormwater management to the MEP that is required with new development, and anticipated “Accounting for Growth” policies. This restoration plan is developed to treat the reduction required from the initial baseline year load, calibrated to the current Bay model. Based on coordination with MDE, TMDL restoration planning should focus on the untreated and undertreated areas associated with the urban footprint at the time of the TMDL baseline. Future loads and loads potentially added to the urban sector since the baseline year to present are not accounted for here as they are addressed under other programs. MDE has requested in restoration plan development guidance (MDE, 2014d) that jurisdictions begin estimating potential additional loads, therefore estimates are included in section 3.3.1.

3.3.1 Estimates of Future Growth

As stated in the MDE guidance document General Guidance for Developing a Stormwater Wasteload Allocation (SW-WLA) Implementation Plan, Section 1.h. (MDE, 2014d):

New urban areas that have been developed since TMDL allocations were set imply loads beyond the original SW-WLA (i.e., additional urban footprint within a watershed). This can confound the process of accounting for load reductions to meet the allocations. MDE is working to develop methods to deal with this issue. However, MDE is also recommending that within the SW-WLA implementation plans, local jurisdictions estimate this potential new urban load as the next step in a longer-term process to address the issue.

The Anne Arundel County General Development Plan was finalized April 2009 and was adopted in October 2009 (Bill No. 64-09; Anne Arundel County, 2009). The next update of the plan is due by 2019. Anne Arundel County is considered one of the fastest growing counties in the region with 14.6% population growth (427,239 to 489,656 persons) over 1990-2000 compared to 6.9% growth in the Baltimore region and 10.8% growth throughout the State of Maryland (Anne Arundel County, 2009). The population in Anne Arundel County is projected to increase to 564,925 persons by 2025, which is an increase of 15.4% from 2000 data and to 579,137 persons by 2035, an increase of 18.3% from 2000 data.

The primary developed areas located in Upper Patuxent watershed are Davidsonville, the southern extent of Laurel Park, and the outer extents of development associated with Crofton. The Upper Patuxent watershed is not included in the County’s Priority Funding Areas which are areas where the County directs new growth. Therefore, expected growth will not be targeted in this area. For development that does occur, Anne Arundel County continues to utilize strategies such as promoting low impact development and implementing stormwater BMPs for water quality treatment. However, increased urban stormwater related loads will inevitably occur as growth continues.

To estimate potential increases in loads over time due to growth, an analysis was completed using a combination of Maryland Assessment Scenario Tool (MAST) modeled loading estimates, and estimates based on recent growth patterns. Figure 6 shows initial conditions loads without BMPs as modeled in MAST (grey bars) at the Upper Patuxent 8-digit subwatershed scale as well as projected loads with (blue bars) and without (orange bars) the application of stormwater BMPs to the maximum extent practicable (SW to the MEP). Projected loads were calculated by applying the average percent change observed between MAST loading result from 2010 through 2015 (1.9%) to loads of the previous year. In this manner a 1.9% annual increase in loads would be expected from 2015 to 2025 if development were to

occur at the same rate and be implemented without BMPs. Because in actuality new development will follow Maryland’s stormwater regulations, the resultant loading increases were reduced by 90% based on the MAST removal rates for sediment treated by stormwater treatment to the maximum extent practicable (SW to the MEP). The results are shown as the blue bars in Figure 6. Additional projected loads without the application of SW to the MEP sediment removal rates are shown as the orange bars in Figure 6.

Projected loading in 2025 with the application of SW to the MEP will be incorporated in TMDL modeling efforts to account for growth in the watershed.

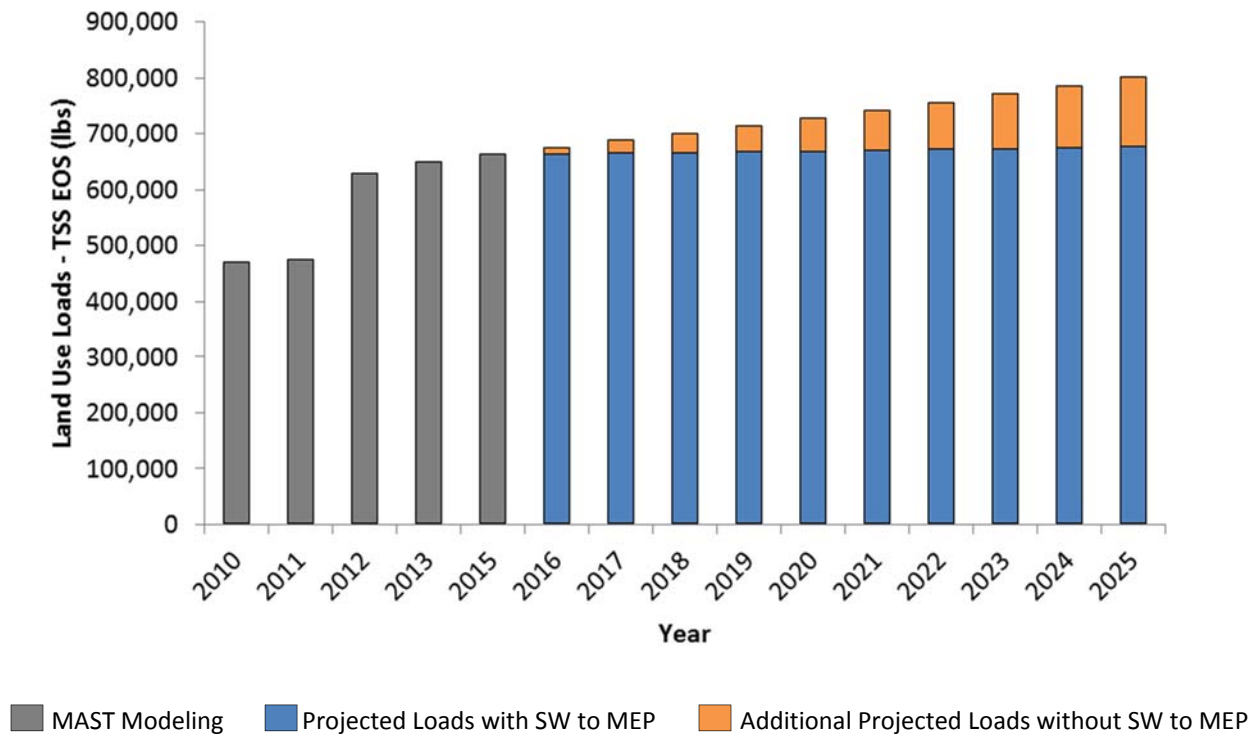


Figure 6: Modeled and Projected Land Use Loads

Figure 7 depicts sediment runoff loading by subwatershed based on a future conditions modeling scenario with the implementation of projects funded in the County’s Capital Improvement Program (CIP) as recommended in the Upper Patuxent River Watershed Overall Summary Recommendation Report (Anne Arundel County, 2008) and discussed further in Section 4: Management Measures. In general, future sediment loading is projected to be highest in portions of the Upper Patuxent Mainstem (UP2, UP7, UP8, and UPB) and King’s Branch (UPD).

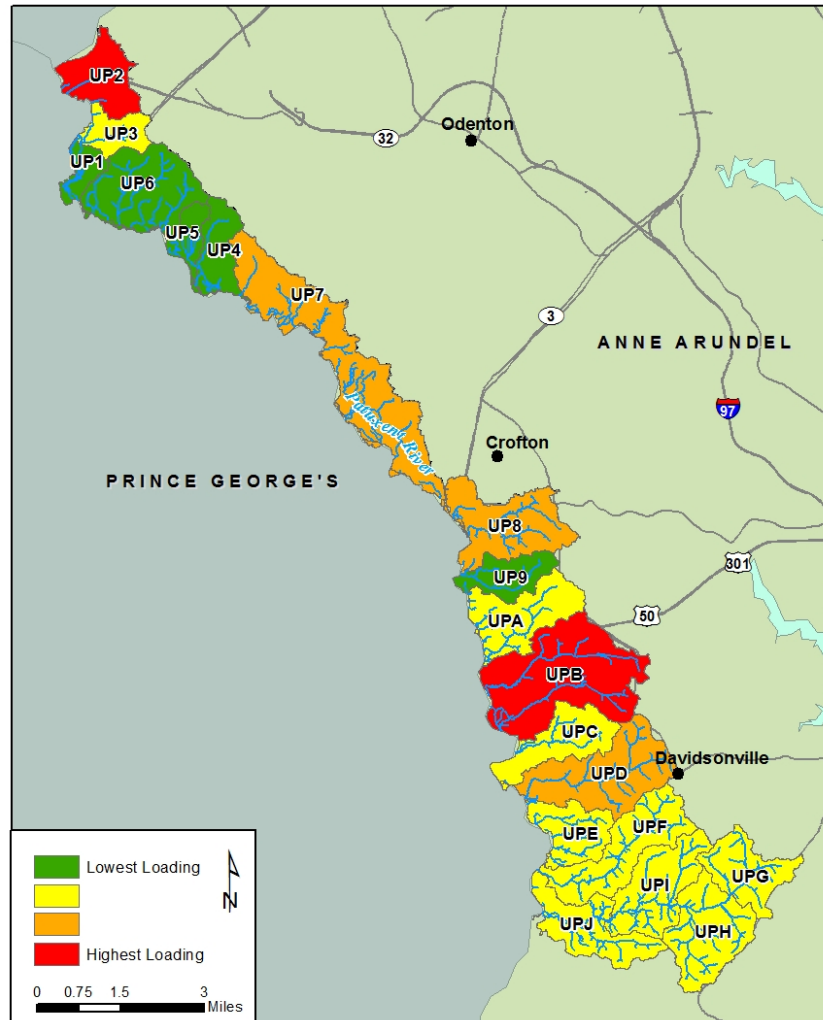


Figure 7: Total Suspended Solids Loads from Runoff Based on Future Conditions - Includes BMP Reductions

3.3.2 Offsetting Sediment Loads from Future Growth

Growth and development is expected to occur throughout Anne Arundel County, and depending on when and where this growth occurs, pollutant loading from urban stormwater sources may also increase. It is anticipated that new development will make use of ESD stormwater treatment according to MDE's Stormwater Regulations.

Maryland's 2007 Stormwater Management Act went into effect in October of 2007, with resulting changes to COMAR and the 2000 Maryland Stormwater Design Manual in May of 2009. The most significant changes relative to watershed planning are in regard to implementation of ESD. The 2007 Act defines ESD as "using small-scale stormwater management practices, nonstructural techniques, and better site planning to mimic natural hydrologic runoff characteristics and minimize the impact of land development on water resources." As such Anne Arundel County has updated Articles 16 and 17 of the County Code to incorporate the requirements for ESD. Anne Arundel County finalized the *Anne Arundel County Stormwater Management Practices and Procedures Manual* to incorporate criteria specific to the County that are not addressed within the Maryland Design Manual (Anne Arundel County, 2010).

Figure 6 in Section 3.3: Anticipated Growth shows projected land use loads with and without the application of SW to the MEP. TMDL modeling efforts include the application of SW to the MEP to represent ESD treatment for new development in the watershed. SW to the MEP will control 90% of sediment loads for that new development.

Anticipated “Accounting for Growth” policies will address the residual load (TN: 50%, TP: 40%, TSS: 10%, and bacteria: 30%) that is potentially uncontrolled by development-based stormwater controls. As required by the State’s Watershed Implementation Plan (Bay Restoration Plan) Maryland is developing an Accounting for Growth (AFG) policy that will address the expected increase in the State’s pollution load from increases in population growth and new development. While not currently a fully formed policy, the State’s plan, as of the *Final Report of the Workgroup on Accounting for Growth in Maryland* (August 2013) focuses on two elements: 1) the strategic allotment of nutrients loads to large wastewater treatment plants, upgraded to the best available technology; and 2) the requirement that all other new loads must be offset by securing pollution credits.

4 Management Measures (c)

Best management practices (BMPs) are either already implemented or are planned for implementation to achieve and maintain the Upper Patuxent local TMDL load reductions. This section serves to describe the types of BMPs and management measures being implemented in the watershed. Load reductions that result from these measures are discussed in the following section, Section 5: Expected Load Reductions.

4.1 Modeling Approach

Each BMP provides a reduction for nitrogen, phosphorus, and sediment, along with other pollutants. The pollutant load for the Upper Patuxent watershed was determined using BayFAST, which calculates pollutant loads and reductions calibrated to the Chesapeake Bay Program Partnership Watershed Model. BayFAST, created by Devereux Environmental Consulting for MDE, is a web-based pollutant load estimating tool that streamlines environmental planning. BayFAST functions similarly to MAST but allows users to specify, delineate facility boundaries (e.g., watershed, parcel, drainage area), and alter land use information within the delineated boundary depending on the model year. Local TMDL baseline loads were calibrated in BayFAST by modeling BMPs installed prior to the TMDL baseline year on top of baseline land use background loads. This ensures that the same set of baseline BMPs are used throughout future progress and planned scenarios.

BayFAST estimates of load reductions for point and nonpoint sources include: agriculture, urban, forest, and septic loading. Load reductions are not tied to any single BMP, but rather to a suite of BMPs working in concert to treat the loads. Both BayFAST and the Chesapeake Bay Program Partnership Watershed Model calculate reductions from all BMPs as a group, much like a treatment train. Reductions are processed in order, with land use change BMPs first, load reduction BMPs next, and BMPs with individual effectiveness values at the end. The overall the load reduction can vary depending on which BMPs are implemented.

Pollutant load reductions achieved by maintenance efforts (e.g., street sweeping and inlet cleaning) are calculated outside of BayFAST. As discussed in the following section 4.2: Best Management Practices,

inlet cleaning and street sweeping will be practiced in the Upper Patuxent watershed. Sediment reduction credit for street sweeping and inlet cleaning is calculated following methods described in MDE (2014b). Vacuum-assisted street sweeping at a rate of 2 times per month reduces the load on the swept area by 25%. Inlet cleaning receives credit based on the mass of material collected, at the rate of 420 lb TSS per ton of wet material.

Both the Chesapeake Bay Program Partnership Watershed Model and BayFAST provide loads at two different scales: Edge-of-Stream (EOS) and Delivered (DEL). Delivered loads show reductions based on in-stream processes, such as nutrient uptake by algae or other aquatic life. This TMDL plan focuses on reducing load on the land, so EOS estimates are more appropriate and were used for all the modeling analysis.

This section presents the level of BMP implementation. Section 9 presents information on how progress toward load reductions will be evaluated and management plans adapted on an on-going basis.

4.2 Best Management Practices

Many stormwater BMPs address both water quantity and quality, however, some BMPs are more effective at reducing sediment than others. The stormwater practices listed below keep the focus on “green technology” to reduce the impacts of stormwater runoff from impervious surfaces. These BMPs were selected specifically for three reasons: 1) effectiveness for water quality improvement, 2) willingness among the public to adopt, and 3) implementable in multiple facility types without limitations by zoning or other controls.

These practices are consistent with those currently being implemented by Anne Arundel County DPW as water quality improvement projects. The County has the technical expertise, operational capacity, and system resources in place to site, design, construct and maintain these practices.

The recommended practices are also consistent with those proposed in the County’s Phase II WIP for the Chesapeake Bay TMDL and in the County’s comprehensive watershed planning efforts. Exceptions to this are dry ponds which include dry detention ponds and dry extended detention ponds. These practices are no longer considered for future implementation; however, there are many existing facilities that are still actively treating runoff throughout the County so they are described here as well. The practices include:

- **Bioretention** — An excavated pit backfilled with engineered media, topsoil, mulch, and vegetation. These are planting areas installed in shallow basins in which the storm water runoff is temporarily ponded and then treated by filtering through the bed components, and through biological and biochemical reactions within the soil matrix and around the root zones of the plants. Rain gardens may be engineered to perform as a bioretention.
- **Bioswales** —An open channel conveyance that functions similarly to bioretention. Unlike other open channel designs, there is additional treatment through filter media and infiltration into the soil.
- **Dry Detention Ponds** – Depressions or basins created by excavation or berm construction that temporarily store runoff and release it slowly via surface flow. BayFAST modeling includes hydrodynamic structures in this category. These devices are designed to improve quality of stormwater using features such as swirl concentrators, grit chambers, oil barriers, baffles,

micropools, and absorbent pads to remove sediments, nutrients, metals, organic chemicals, or oil and grease from urban runoff.

- **Dry Extended Detention Ponds** - Depressions created by excavation or berm construction that temporarily store runoff and release it slowly via surface flow or groundwater infiltration following storms. They are similar in construction and function to dry detention basins, except that the duration of detention of stormwater is designed to be longer, allowing additional wet sedimentation to improve treatment effectiveness.
- **Impervious Surface Reduction** - Reducing impervious surfaces to promote infiltration and percolation of runoff storm water. Disconnection of rooftop and non-rooftop runoff, rainwater harvesting (e.g., rain barrels), and sheetflow to conservation areas are examples of impervious surface reduction.
- **Infiltration** — A depression or trench to form a shallow basin where sediment is trapped and stormwater infiltrates into the soil. No underdrains are associated with infiltration basins and trenches, because by definition these systems provide complete infiltration. Design specifications require infiltration basins and trenches to be built in good soil; they are not constructed on poor soils, such as C and D soil types. Yearly inspections to determine if the basin or trench is still infiltrating runoff are planned. Dry wells, infiltration basins, infiltration trenches, and landscaped infiltration are all examples of this practice type.
- **Outfall Enhancement with Step Pool Storm Conveyance (SPSC)** – The SPSC is designed to stabilize outfalls and provide water quality treatment through pool, subsurface flow, and vegetative uptake. All County SPSCs are completed at the end of outfalls, prior to discharging to a perennial stream. The retrofits promote infiltration and reduce stormwater velocities. This strategy is modeled in BayFAST as bioswales.
- **Stream Restoration** - Stream restoration in urban areas is used to restore the urban stream ecosystem by restoring the natural hydrology and landscape of a stream, help improve habitat and water quality conditions in degraded streams.
- **Stormwater Retrofits** – Anne Arundel County plans to construct a variety of retrofits throughout the County. Stormwater retrofits may include converting dry ponds, dry extended detention ponds, or wet extended detention ponds into wet pond structures, wetlands, infiltration basins, or decommissioning the pond entirely to install SPSC (step pool storm conveyance).
- **Urban Filtering** - Practices that capture and temporarily store runoff and pass it through a filter bed of either sand or an organic media. There are various sand filter designs, such as above ground, below ground, perimeter, etc. An organic media filter uses another medium besides sand to enhance pollutant removal for many compounds due to the increased cation exchange capacity achieved by increasing the organic matter. These systems require yearly inspection and maintenance to receive pollutant reduction credit.
- **Urban Tree Plantings** - Urban tree planting is planting trees on urban pervious areas at a rate that would produce a forest-like condition over time. The intent of the planting is to eventually convert the urban area to forest. If the trees are planted as part of the urban landscape, with no intention to convert the area to forest, then this would not count as urban tree planting
- **Vegetated Open Channels** - Open channels are practices that convey stormwater runoff and provide treatment as the water is conveyed, includes bioswales. Runoff passes through either vegetation in the channel, subsoil matrix, and/or is infiltrated into the underlying soils.
- **Wet ponds or wetlands** — A water impoundment structure that intercepts stormwater runoff then releases it at a specified flow rate. These structures retain a permanent pool and usually have retention times sufficient to allow settlement of some portion of the intercepted sediments and attached pollutants. Until 2002 in Maryland, these practices were generally

designed to meet water quantity, not water quality objectives. There is little or no vegetation within the pooled area nor are outfalls directed through vegetated areas prior to open water release. Nitrogen reduction is minimal, but phosphorus and sediment are reduced.

The measured effectiveness for each of these practices may be found in Table 8.

Table 8: Typical Sediment Reduction from Stormwater BMPs

BMP	Sediment Reduction
Bioretention A/B soils	80%
Bioretention C/D soils	55%
Bioswales	80%
Dry Detention Ponds	10%
Dry Extended Detention Ponds	60%
Impervious Surface Reduction*	-
Infiltration	95%
Outfall Enhancement with SPSC**	80%
Stream Restoration	15.13 lbs/linear ft
Urban Filtering	80%
Urban Tree Plantings*	-
Vegetated Open Channels	70%
Wet Ponds or Wetlands	60%

Sources: Simpson and Weammert, 2009; and Maryland Assessment Scenario Tool (MAST) documentation

* Calculated as a land use change to a lower loading land use

**Outfall enhancement with SPSC modeled as bioswales in BayFAST

Along with the structural BMPs listed above, treatment will also be provided through non-structural measures. These are treatments that rely on programs that continue throughout the year and are repeated annually.

- **Inlet Cleaning** - Storm drain cleanout practice ranks among the oldest practices used by communities for a variety of purposes to provide a clean and healthy environment, and more recently to comply with their NPDES stormwater permits. Sediment reduction credit is based on the mass of material collected, at the rate of 420 lb TSS per ton of wet material (MDE, 2014b).
- **Street sweeping** — Starting Fiscal Year 2015, Anne Arundel County has enhanced their street sweeping program which now includes sweeping curb-miles within the Upper Patuxent (Anne Arundel County DPW, 2015; Figure 8). This enhanced program targets impaired watersheds and curbed streets that contribute trash/litter, sediment, and other pollutants. For full credit by MDE, street sweeping should occur twice a month or 26 times a year on urban streets. This frequent sweeping of the same street will reduce nitrogen and phosphorus as well as sediment. Under the enhanced street sweeping program Anne Arundel County is sweeping arterial, collector, and local streets within the Upper Patuxent watershed on a bi-weekly basis (26 times a year). Vacuum-assisted street sweeping at a rate of 2 times per month reduces the load on the swept area by 25%. In order to quantify sediment load reductions from monthly sweeping efforts, the removal rate of 25% for vacuum-assisted monthly sweeping was applied to total sediment collected from swept streets (MDE, 2014c).

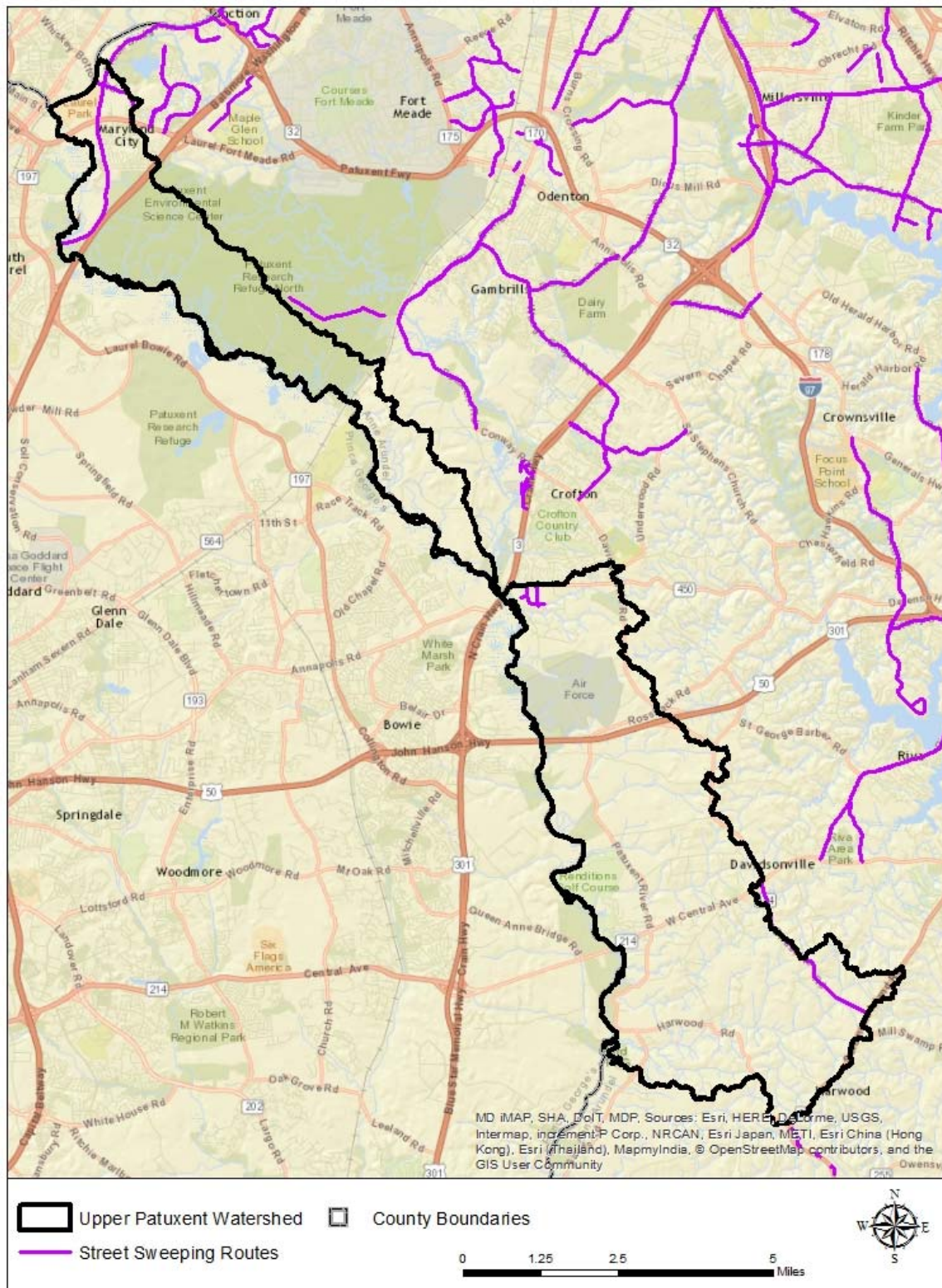


Figure 8: Street Sweeping Routes in Upper Patuxent Watershed, Anne Arundel County, Maryland

5 Expected Load Reductions (b)

WLAs in the sediment TMDL were developed using the Chesapeake Bay Program Phase 5.2 (CBP P5.2) watershed model. Currently, BayFAST is using a computational framework that is compatible with an updated version of the model: CBP P5.3.2. Because the TMDL was developed under an older version of the model, the TMDL WLA needed to be translated into a BayFAST-compatible target load. In order to do this, the 2005 baseline sediment load was re-calculated in BayFAST by modeling baseline BMPs in Upper Patuxent on top of baseline impervious and pervious Anne Arundel County Phase I MS4 acres. The required reduction percent assigned to the Anne Arundel County Phase I MS4 source (11.4%) in the local TMDL regulation was then applied to the new baseline load to calculate required sediment reduction. The required sediment reduction was then subtracted from the new baseline load to calculate the BayFAST-compatible target TMDL WLA. Sediment loads required for the Upper Patuxent Anne Arundel County Phase I MS4 source are shown in Table 9.

Table 9: Sediment Loads Required for the Upper Patuxent Watershed Local TMDL Anne Arundel County Phase I MS4 Source – Calibrated to BayFAST

2005 Baseline Load (lbs/yr)	Required Reduction %	Required Reductions (lbs/yr)	TMDL Load Allocation (lbs/yr)
485,565	11.4%	55,354	430,211

5.1 2015 Progress – Actual Implementation

Anne Arundel County maintains an extensive geodatabase of stormwater urban BMP facilities and water quality improvement projects (WQIP). Approximately 22 acres of County Phase I MS4 land has been treated by restoration BMPs through 2015 in addition to 3,750 linear feet of stream restoration and the implementation of other non-structural restoration BMPs (source: 2015 NPDES Annual Report database- Attachment A: Table B and D; and County CIP list of completed projects). Current BMP implementation through 2015 in the Upper Patuxent is shown in Table 10. Baseline BMPs for the watershed are also included in Table 10. A list of completed projects is included in Appendix A.

Table 10: Current BMP Implementation through 2015 for Upper Patuxent River

BMP	Unit	2005 Baseline	2006 - 2015 Restoration
Bioretention	acre	0.0	0.1
Bioswale	acre	4.0	0.0
Dry Ponds	acre	52.6	0.0
Extended Detention Dry Ponds	acre	13.6	0.0
Impervious Surface Reduction	acre	0.0	0.1
Infiltration	acre	255.0	0.0
Inlet Cleaning	no. of inlets	0.0	38.0
Street Sweeping	curb miles	0.0	4.9
Urban Stream Restoration	linear feet	0.0	3,750.0
Wet Ponds or Wetlands	acre	159.9	22.3

Source: WPRP urban BMP and WQIP database

2015 Progress results are shown in Table 11.

Table 11: 2015 Progress Reductions Achieved

Baseline Load and TMDL WLA	TSS-EOS lbs/yr
2005 Baseline Scenario Load	485,565
Required Percent Reduction	11.4%
Required Reduction	55,354
Local TMDL WLA	430,211
2015 Progress Results	TSS-EOS lbs/yr
2015 Progress Reduction Achieved	61,610
2015 Percent Reduction Achieved	12.7%

5.2 Planned Implementation

Table 12 compares implementation of existing restoration BMPs with planned levels of implementation. This increase in implementation will continue to achieve the loads required in the local. These loads meet the TMDL required reductions for the Upper Patuxent (Table 13). A list of completed projects and projects programmed out to FY19 is included in Appendix A.

Figure 9 shows baseline and progress loads (green bars) and planned loads (yellow bars) compared to milestone goal loads (red bars and red line). This comparison shows that the baseline load will be treated to the required TMDL allocated load with current and future BMP implementation.

Table 12: Restoration BMP Implementation - Current 2015 and Planned 2025 Implementation Levels for the Upper Patuxent River

BMP	Units	2006 - 2015 Restoration	2016 - 2025 Planned Restoration	Total Restoration
Bioretention	acre	0.1	0.0	0.1
Impervious Surface Reduction	acre	0.1	0.0	0.1
Inlet Cleaning	no. of inlets	38.0	38.0	38.0
Outfall Enhancement with SPSC	acre	0.0	201.9	201.9
Street Sweeping ¹	curb-miles	4.9	4.9	4.9
Urban Filtering	acre	0.0	10.0	10.0
Urban Stream Restoration	linear feet	3,750.0	1,250.0	5,000.0
Wet Ponds or Wetlands	acre	22.3	22.2	44.5

¹Includes curb-miles for arterial, collector, and local streets. Arterial, collector, and local streets swept bi-weekly (26 times a year).

Table 13: 2025 Planned Reductions

Baseline Load and TMDL WLA	TSS-EOS lbs/yr
2005 Baseline Scenario Load	485,565
Required Percent Reduction	11.4%
Required Reduction	55,354
Local TMDL WLA	430,211
2025 Planned Results	TSS-EOS lbs/yr
2025 Planned Load ¹	352,442
2025 Planned Reduction Achieved	133,123
2025 Percent Reduction Achieved	27.4%

¹2025 Planned load is the 2025 Planned Reduction Achieved subtracted from the 2005 Baseline Loads. It is assumed that all new development will be treated with SW to the MEP implementation to achieve 90% sediment removal and Accounting for Growth policies will address the remaining 10%.

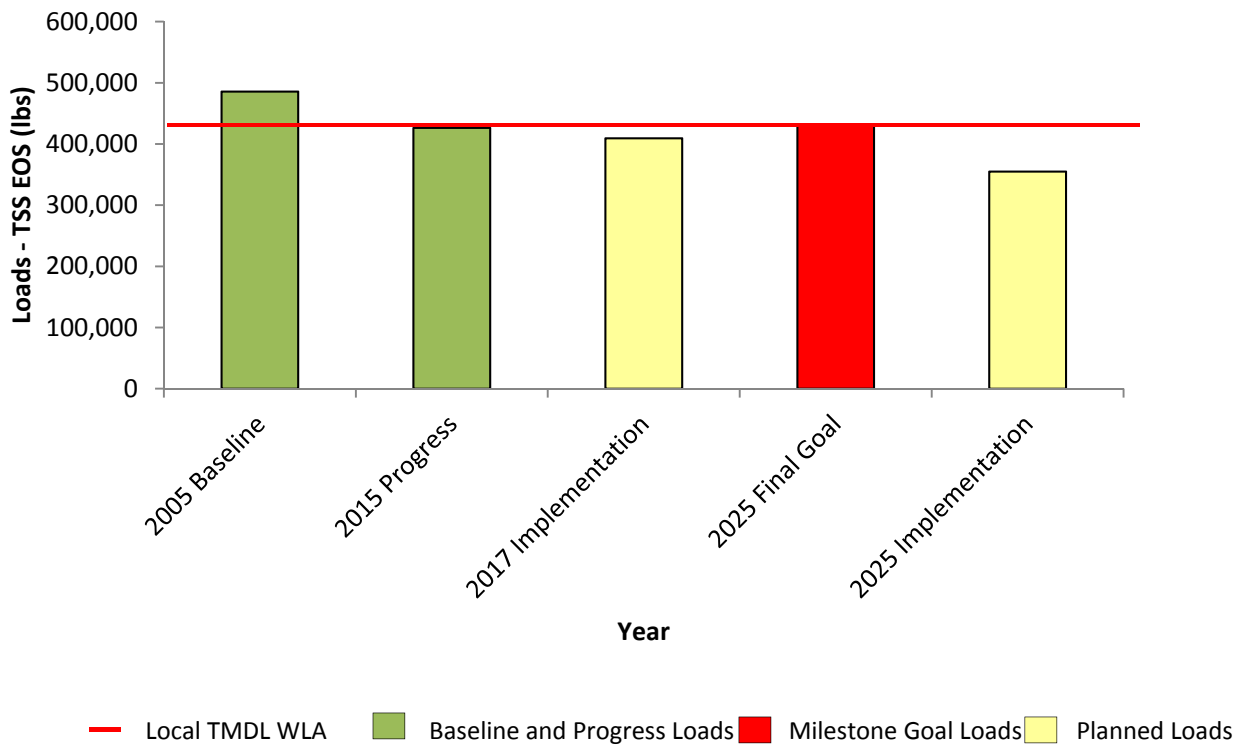


Figure 9: Progress and Planned Reductions in the Upper Patuxent River Watershed

6 Technical and Financial Assistance Needs (d)

Technical Needs

Technical assistance to meet the reductions and goals of a TMDL takes on many forms including MDE assistance to local governments, state and local partner assistance to both MDE and municipalities, and technical consultants contracted to provide support across a wide variety of service areas related to BMP planning and implementation.

MDE has and will provide technical assistance to local governments through training, outreach and tools, including recommendations on ordinance improvements, technical review and assistance for implementation of BMPs at the local level, and identification of potential financial resources for implementation (MDE, 2014b).

Anne Arundel County DPW contracts with consultants through several contract vehicles including open-end task based assignments, to provide a variety of technical services. These services, provided by planners, engineers, environmental scientists and GIS specialists, include watershed assessment and management, stream monitoring, stormwater planning and design, stream restoration design, outfall enhancement, and environmental permitting, among others. The County itself has complementary staff in DPW and other County departments to manage contracts, provide review and approval of planning and design work, conduct assessments, and develop and administer planning and progress tracking tools.

Anne Arundel County has many partners that provide outreach to homeowners and communities in the form of technical assistance, education, and funding for implementation of best management practices within local communities. The Watershed Stewards Academy, further discussed in Section 7: Public Participation/Education, routinely engages and informs the public on reducing pollution sources and employing stormwater/rainscaping retrofits to reduce their impacts.

Technical assistance for Public Participation and Education and for Monitoring will also be necessary to fully implement and track progress towards meeting the goals of the local TMDL. These elements are discussed in sections 7 and 10 of this plan.

Financial Needs

The total projected cost to implement the County's CIP projects described in this plan for the Upper Patuxent watershed is \$7,955,254 including \$6,629,369 towards outfall enhancements with SPSC, \$668,773 towards stormwater pond retrofits, \$547,825 towards stream restorations, \$28,171 for inlet cleaning, and \$81,115 for street sweeping. Structural BMP, outfall enhancement, and stream restoration projects are frequently combined together on a single contract. In these cases, costs for single projects were estimated from the total contract cost by dividing the total cost by total drainage area for all projects to create a cost per acre treated. The cost per acre treated was then used to calculate an individual project cost using each project's specific drainage area. Stream restoration project costs for lumped projects were estimated using \$503 per linear foot. The stream restoration cost of \$503 came from the average cost per linear foot from all projects on the County's CIP list in the Baltimore Harbor and Patapsco Lower North Branch watersheds.

Non-structural BMP costs for inlet cleaning and street sweeping are based on current County contractor operating costs for those practices. Operating costs do not include the purchase and maintenance of street sweeping equipment. Inlet cleaning costs assumed each inlet required mechanical cleaning at \$67 per inlet. Street sweeping costs are \$58 per curb mile swept, or \$116 dollars per mile when both sides of a street are swept. Annual costs for these programs in the Upper Patuxent watershed are

estimated at \$2,561 per fiscal year for inlet cleaning and \$7,374 per fiscal year for street sweeping. The annual values were extrapolated out for the number of years in each planning period in the table below.

Table 14 includes a summary of funding needs per project type. Project costs are inclusive of all project elements and include design, obtaining land ROW, construction, and County overhead/administrative costs. The costs are presented based on restoration planning periods out to FY2025. Projects and their related costs were grouped over time based on the period in which the project would be completed.

Table 14: Upper Patuxent River Cost over Milestone Periods

Project type	FY2015	FY2016- FY2017	FY2018- FY2019	FY2020- FY2021	FY2022- FY2025	Total Cost
Outfall Stabilization - SPSC			\$6,629,369			\$6,629,369
SWM Pond Retrofit		\$458,332	\$210,441			\$668,773
Stream Restoration		\$145,425	\$402,400			\$547,825
Inlet Cleaning	\$2,561	\$5,122	\$5,122	\$5,122	\$10,244	\$28,171
Street Sweeping	\$7,374	\$14,748	\$14,748	\$14,748	\$29,496	\$81,115
					Grand Total	\$7,955,254

6.1 Funding Sources

A major source of funding for the implementation of local stormwater management plans through stormwater management practices and stream and wetland restoration activities is the County's Watershed Protection and Restoration Fee. To comply with forthcoming requirements of the Phase I NPDES MS4 permit, and to support restoration efforts towards reducing pollutant loads required for both the Chesapeake Bay TMDL and local TMDLs throughout Maryland, the State Legislature passed a law in 2012 (House Bill 987) mandating that Maryland's 10 largest jurisdictions (those with Phase I MS4 permits), including Anne Arundel County, develop a Watershed Protection and Restoration Program and establish a Stormwater Remediation Fee. To comply with the State legislation, Anne Arundel County passed legislation in 2013, Bill 2-13.

The County's Stormwater Remediation Fee, which is termed the Watershed Protection and Restoration Fee is assessed to Anne Arundel County property owners based on the amount of impervious surface on their property and was included as a separate line item on the owner's real property tax bill. The fee is structured to provide sufficient funding for projects to meet the pollutant load reduction required by the Chesapeake Bay TMDL, EPA approved individual TMDLs with a SW-WLA and to meet the impervious surface management requirements as well as other stormwater obligations set forth in the County's NPDES MS4 Permit.

In 2015, the Maryland Legislature passed Senate Bill 863 (Watershed Protection and Restoration Programs – Revisions) which repealed House Bill 987 (Stormwater Management – Watershed Protection and Restoration Program). Senate Bill 863 removed the *requirement* that jurisdictions adopt the Stormwater Remediation Fee but did still allow for the jurisdictions to adopt and collect the fee. As a replacement of the stormwater remediation fee requirement, jurisdictions are now to develop financial assurance plans, due July 1, 2016, and every two years, that describe how stormwater runoff will be treated and paid for over the next five years to meet TMDL and impervious surface treatment

requirements. Anne Arundel County's financial assurance plan was adopted by County Council on July 5th, 2016. The County is currently awaiting comment from MDE.

Prior to adoption of the Watershed Protection and Restoration Fee and, as stated in the Anne Arundel County Phase II WIP (Anne Arundel County, 2012a), the County's funding capacity to implement urban stormwater restoration/retrofit projects was limited by the County's CIP budget for environmental restoration and water quality improvement projects. Anne Arundel County actively pursues grant funding from Federal, State and non-governmental organizations (NGOs) to leverage funding for its restoration projects. The County has also developed a Grant Program to provide funding to local NGOs to facilitate implementation of restoration projects that further the County's ability to meet its regulatory requirements.

7 Public Participation / Education (e)

7.1 County Outreach Efforts

Anne Arundel County has given numerous public presentations throughout the development of the County's Phase II WIP in order to disseminate information on the Chesapeake Bay TMDL, WIP process, and strategies for meeting the County's assigned pollutant load reductions. In addition to providing a level of understanding to the public, the County uses the presentations as an opportunity to receive input and comment on restoration efforts. Anne Arundel County has a variety of organizations interested in water quality, including Severn River Association; South River Federation; Anne Arundel County Commercial Owners; Anne Arundel Watershed Stewards Academy; Anne Arundel County Chamber of Commerce, Environmental Committee; Leadership Anne Arundel; and, Chesapeake Environmental Protection Association (Anne Arundel County, 2012).

In order to implement an effective strategy to meet water quality standards and achieve pollutant load reduction, an effort to engage a very broad audience of landowners was a necessity. The Anne Arundel Watershed Stewards Academy (AAWSA), a pre-eminent non-profit (501(c)3) environmental organization, was formed through Anne Arundel County Department of Public Works and the County Board of Education's Arlington Echo Outdoor Education Center (Anne Arundel County, 2012). AAWSA's mission is to identify, train, and support citizens to become Master Watershed Stewards who take action with their neighbors to restore local waterways in Anne Arundel County. This program is a unique way to integrate education as a vital element in its role in preservation, conservation and advocacy. There are currently more than 100 certified Master Watershed Stewards throughout Anne Arundel County and adjacent areas.

The AAWSA has extensive resources through the Consortium of Support Professionals which is composed of over 80 governmental, non-profit and business professionals who provide technical assistance to Master Watershed Stewards. Consortium members are experts in their field of conservation, ecology, government laws, landscape architecture, low impact design, water quality monitoring, and watershed assessment and provide consulting on design and development of watershed restoration projects. The AAWSA is also supported by staff that provides day to day guidance to Master Watershed Stewards, connecting Stewards to Anne Arundel County resources, coordinating Stewards certification, post certification professional development, and networking opportunities for Stewards and Consortium of Support Professionals.

The AAWSA has an interactive website (www.aawsa.org) that provides guidance to common water quality problems including information on the following:

- Reduce Your Pollution
 - Practice Bay-Friendly Lawn Care
 - Maintain and Upgrade your Septic System
 - Pick Up Pet Waste
 - Choose Non-Toxic Household Products
 - Maintain your Car and Boat
 - Reduce your Energy Use
- Capture Stormwater
 - Install a Rain Barrel or Cistern
 - Build a Rain Garden
 - Choose to Have Conservation Landscapes
 - Plant Native Trees
 - Direct Water with Swales and Berms
 - Use Permeable Pavers and Pavement
- Clean Up!
 - Invasive Species Removal
 - Dump Site Cleanup
- Conserve and Preserve
 - Land Preservation

These programs and others like them could be more focused on the Upper Patuxent watershed.

In addition to the AAWSA, the following organizations have been identified for possible partnerships and education and outreach for the Upper Patuxent:

- Master Gardeners
- Audubon Society
- Students for the Environment
- Maryland civic associations and service clubs:
 - Maryland Home Builders Assoc.
 - Audubon Naturalist Society of the Central Atlantic States
 - Audubon Society of Central Maryland
 - Blue Water Baltimore
 - Chesapeake Audubon Society
 - Chesapeake Bay Program
 - Chesapeake Bay Foundation
 - Chesapeake Bay Trust
 - Chesapeake Ecology Center
 - Center for Watershed Protection
 - Alliance for the Chesapeake Bay
 - Alliance for Sustainable Communities
 - Baywise Master Gardeners
 - Sierra Club – Maryland Chapter
 - Magothy River Association
 - Patuxent Riverkeeper
 - West/Rhode Riverkeeper

- Nature Conservancy
- Smithsonian Environmental Research Center
- Anne Arundel Community College
- University of Maryland
- University of Maryland Extension
- Volunteer Center for Anne Arundel County

WPRP has developed a comprehensive web-based informational program including a dedicated webpage, Facebook page and Twitter account to provide information to the public. The webpage, www.aarivers.org offers valuable information on Anne Arundel County watersheds, including an interactive clickable map that display geographically referenced environmental, utility and land use data in addition to restoration project locations, descriptions, and drainage areas. This outreach platform is also used to notify the public of the opportunity to review and comment on this and other TMDL restoration plans.

7.2 Public Comment Period

Part 4.E.3 of the County's NPDES MS4 permit outlines requirements for public involvement in the development of TMDL restoration plans. The County fulfilled these requirements by providing notice in *The Capital* and *Maryland Gazette* newspapers, which serve all of Anne Arundel County, detailing how the public may obtain information on the plan and provide comments. The County made the reports available for review on the WPRP website at www.aarivers.org and made copies of the restoration plan available at the County office to parties upon request. The County provided for a minimum 30-day comment period from September 28, 2016 to October 28, 2016 before finalizing the plan. No public comments were received at the end of the 30-day review period. Appendix B includes documentation of the public review period notices.

8 Implementation Schedule and Milestones (f & g)

This section presents the target loads and the activities required to achieve those targets based on the 2017 interim and 2025 final loads and implementation targets. The following schedule and milestones follows the Chesapeake Bay TMDL milestone date framework (60% progress by 2017) and end date (2025; USEPA, 2010). This schedule has previously been approved by the CBP for the applicable Bay TMDLs and is believed to be a good option for tracking progress towards reduction goals of the Upper Patuxent local TMDL.

8.1 Loading Allocations and Milestone Targets

Planning loads for 2017 and final loads for 2025 for the Upper Patuxent watershed are presented in Table 15 below. As mentioned in Section 5: Expected Load Reductions (b) (see Tables 10 and 11), progress is already underway with the implementation of strategies throughout the watershed. As a result of current implementation efforts, the 2015 Progress sediment load is less than the 2025 TMDL Allocated load.

Table 15: Upper Patuxent Planning and Target Loads (edge-of-stream loads)

Load	Sediment Load (lbs/year)
2005 Baseline Load	485,565
2015 Progress Load	423,955
2025 TMDL Allocated Load	430,211
Percent Reduction between 2005 Baseline and 2025 Loads	11.4%

8.2 Implementation Milestones

To meet the loading allocations and milestones outlined in the previous section, implementation of programs and BMPs must keep pace and meet planned implementation targets. Table 16 details the implementation for each tracked BMP with the associated unit of measure. The 2015 data reflects existing BMPs while the 2017, 2021, and 2025 values reflect the planned implementation for those years. A list of completed projects and projects programmed out to FY19 is included in Appendix A.

Table 16: Upper Patuxent River Planning Milestones for Implementation

BMP	Unit	2015 Restoration	2017 Planned	2021 Planned	2025 Planned	Total Implement- ation
Bioretention	acre	0.1	0.0	0.0	0.0	0.1
Impervious Surface Reduction	acre	0.1	0.0	0.0	0.0	0.1
Inlet Cleaning	no. of inlets/yr	38	38	38	38	38
Outfall Enhancement with SPSC	acre	0.0	26.6	87.6	87.6	201.9
Street Sweeping ¹	acre	4.9	4.9	4.9	4.9	4.9
Urban Filtering	acre	0.0	10.0	0.0	0.0	10.0
Urban Stream Restoration	linear feet	3,750.0	450.0	400.0	400.0	5,000.0
Wet Ponds or Wetlands	acre	182.2	22.2	0.0	0.0	204.4

¹Includes curb-miles for arterial, collector, and local streets. Arterial, collector, and local streets swept bi-weekly (26 times a year).

8.3 Implementation Priorities

To meet the loading allocations and milestones outlined in the previous sections, implementation will be planned based on prioritization analyses presented in the Upper Patuxent River Watershed Overall Summary Recommendation Report (Anne Arundel, 2008). Upper Patuxent subwatersheds were prioritized for restoration/retrofit project selection potential using three separate prioritization models. The models integrated historical environmental data, current stream assessment monitoring data, drainage area characteristics (GIS data), and watershed modeling results into indicators of watershed condition and need. The indicators are combined into the four models:

- Stream Reach Restoration

- Subwatershed Restoration
- Subwatershed Preservation

The models were designed to operate at three management scales, first at the individual stream reach scale, second at the subwatershed scale. Additionally the models differentiated between identification of restoration opportunities for the degraded portions of the watershed (reach and subwatershed scale), and identification of preservation opportunities (subwatershed and parcel scale) for high quality sensitive areas that could be subject to additional stressors in future scenarios. For the purpose of this Restoration Plan, prioritization results for Stream Reach Restoration and Subwatershed Restoration are presented below to address in-stream sources and urban stormwater runoff, respectively.

8.3.1 Stream Reach Restoration

The stream restoration prioritization uses a suite of indicators that are weighted and then combined into a final relative rating for each perennial reach as identified in the Physical Habitat Condition Assessment. The suite of stream restoration indicators used in the Upper Patuxent watershed, along with the indicator weight is presented in Table 17.

Table 17: Stream Priority Rating Indicators for Restoration (Anne Arundel, 2008)

Category	Indicator	Weight
Stream Habitat	MPHI score	31.6%
Stream Morphology	Rosgen Level I Classification	5.3%
Land Cover	Percent Imperviousness	5.3%
	Riparian buffer impacts	5.3%
	Channel erosion impacts	10.5%
	Head cut impacts	5.3%
Infrastructure	Dumpsite impacts	5.3%
	Other infrastructure impacts (pipes, ditches, stream crossings, obstructions)	15.8%
	Hydrology and Hydraulics	Road Crossing Flooding Potential

A total of 372 reaches were processed in the stream restoration model. The stream reaches in the Upper Patuxent River Watershed were predominantly Good to Fair on the rating scale and are not considered high priority for restoration. Twenty-five reaches were categorized as “Very Poor” and were considered “High” priority or worst condition, 69 were “Poor” or “Medium High” priority, 126 were “Fair” or “Medium” priority, and 152 were “Good” and were considered “Low” priority or best condition (Table 18, Figure 10, and Figure 11). The Stocketts Run subwatershed (UPG, UPH, UPI, UPJ) ranked as a very high priority overall, as 11 of the 25 “Very Poor” reaches are located in Stocketts Run.

Table 18: Stream Restoration Assessment Results (Anne Arundel County, 2008)

Subwatershed	Number of Reaches with Rating			
	Very Poor	Poor	Fair	Good
UP1	No perennial reaches			
UP2	0	2	1	0

Subwatershed	Number of Reaches with Rating			
	Very Poor	Poor	Fair	Good
UP3	No perennial reaches			
UP4	0	0	0	1
UP5	0	0	1	2
UP6	1	1	1	18
UP7	1	3	4	10
UP8	1	8	7	6
UP9	0	1	3	5
UPA	1	7	9	13
UPB	2	5	13	10
UPC	0	5	6	5
UPD	2	6	9	3
UPE	1	3	5	17
UPF	5	8	21	12
UPG	1	5	10	12
UPH	2	1	7	23
UPI	5	8	14	10
UPJ	3	6	15	5
Total	25	69	126	152

8.3.2 Subwatershed Restoration

Similarly to the stream restoration assessment, the subwatershed assessment used a collection of restoration indicators to assign a rating to each subwatershed. The indicators were weighted and combined into a single restoration rating for each subwatershed. Restoration indicators fell into one of six categories: stream ecology, TMDL impairments, On-site Disposal Systems (OSDS), BMPs, Hydrologic and Hydraulic (H&H) Modeling, Water Quality, and Landscape. Each category contains one to four different indicators. Table 19 provides a summary of the categories, indicators, and relative weighting assigned by the County.

Table 19: Subwatershed Priority Rating Indicators for Restoration (Anne Arundel, 2008)

Category	Indicator	Weight
Stream Ecology	Final habitat score	7.5%
	Bioassessment score	7.5%
303(d) List	Number of TMDL impairments	7.5%
OSDSs (Septics)	Nitrogen Loads from septics (lbs)	9.3%
BMPs	Impervious area treated by BMPs (%)	6.6%
	Peak flow from 1-year storm event (cfs/acre)	4.5%
Water Quantity)	Peak flow from 2-year storm event (cfs/acre)	4.5%
	Runoff volume from 1-year storm event (inches/acre)	5.8%
	Runoff volume from 2-year storm event (inches/acre)	5.8%
Water Quality	Nitrogen load from runoff (lbs/acre/yr)	6.9%

Category	Indicator	Weight
(Land only)	Phosphorus load from runoff (lbs/acre/yr)	6.9%
	Total Suspended Solids from runoff (Tons/acre/yr)	0.0%
Landscape	Impervious cover (%)	9.4%
	Forest within the 100 ft stream buffer (%)	10.3%
	% of existing wetlands to potential wetlands	9.4%
	Acres of developable critical area	5.3%

The results of the subwatershed restoration assessment revealed that the subwatersheds in the Upper Patuxent received a reasonable mix of Good, Fair, Poor, and Very Poor ratings. Three of the nineteen subwatersheds received a “Good” rating or best condition and two subwatersheds received a “Very Poor” rating or worst condition (Table 20, Figure 12, and Figure 13). It is also important to focus restoration efforts in subwatershed that ranked highest for existing TSS loads from urban runoff, which include subwatersheds UP2, UP7, UP8, UPB, and UPD (Figure 5).

Table 20: Subwatershed Restoration Assessment Results (Anne Arundel County, 2008)

Rating	Subwatershed
Good	UP1, UP6, UP9
Fair	UP3, UP4, UP5, UP7, UP8, UPA, UPE, UPH, UPI, UPJ
Poor	UPC, UPD, UPF, UPG
Very Poor	UP2, UPB



Figure 10: Stream Restoration Assessment Results - Upper Patuxent River Northern Section

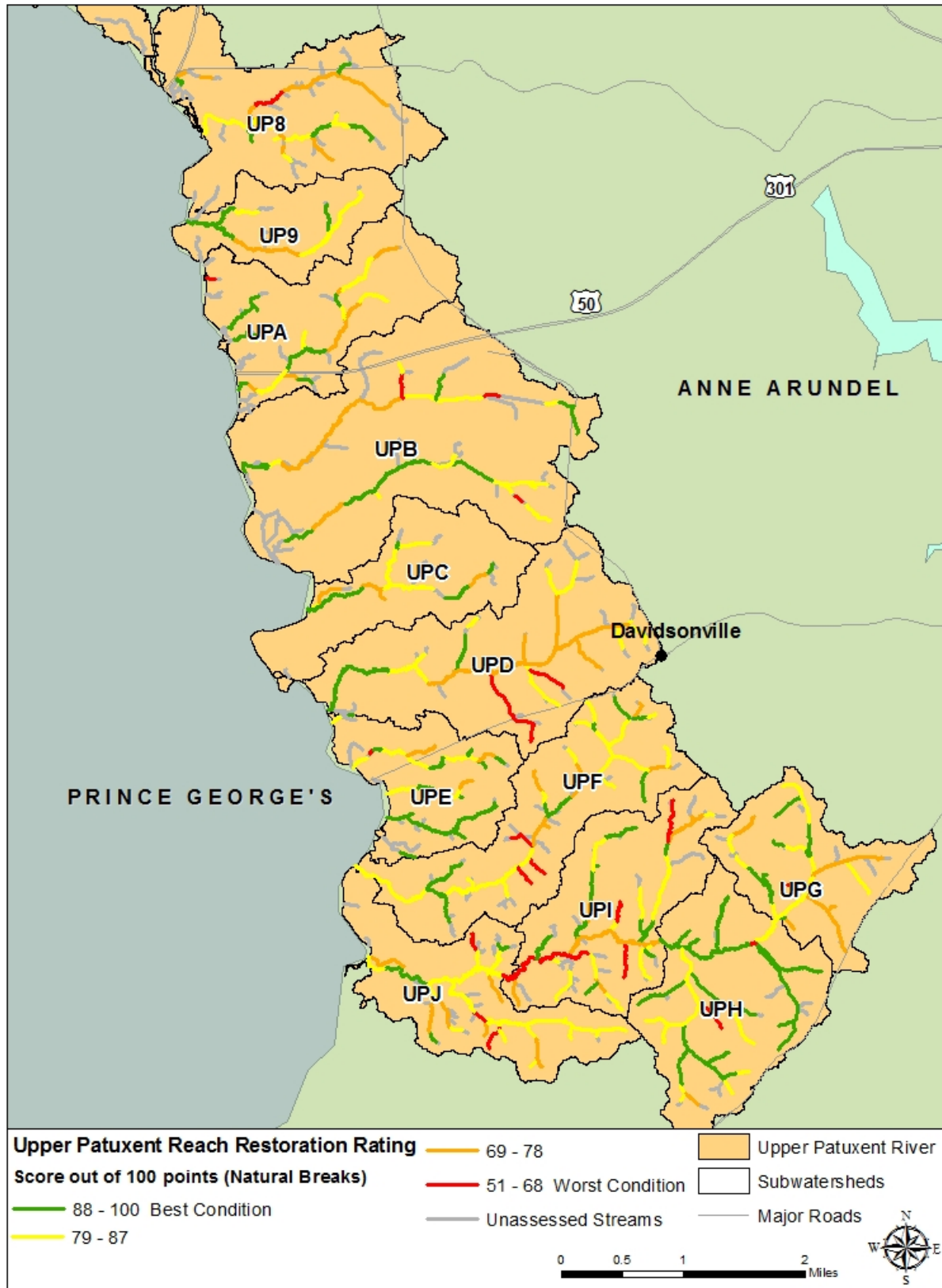


Figure 11: Stream Restoration Assessment Results - Upper Patuxent River Southern Section

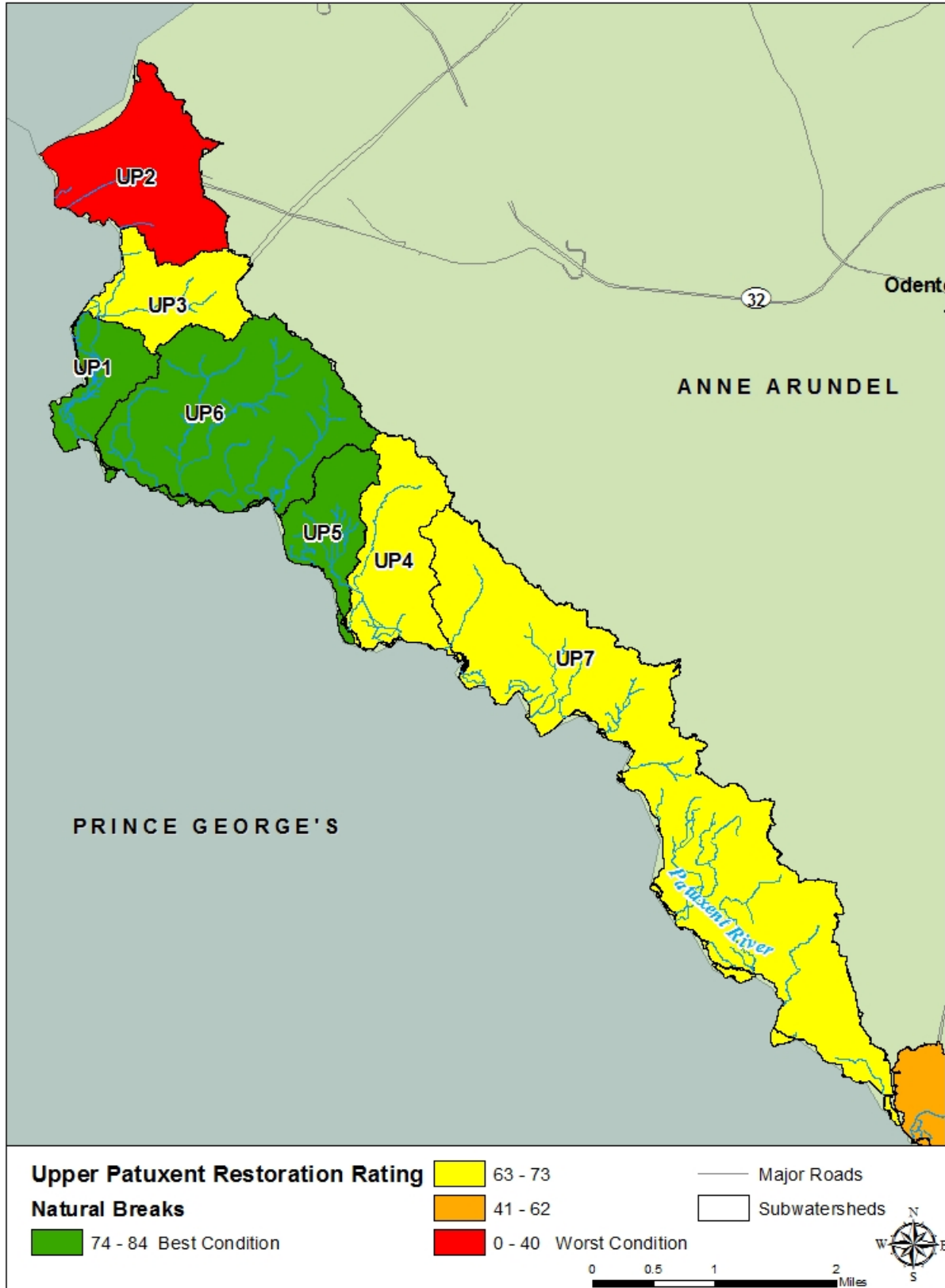


Figure 12: Subwatershed Restoration Assessment Results for the Upper Patuxent River Northern Section

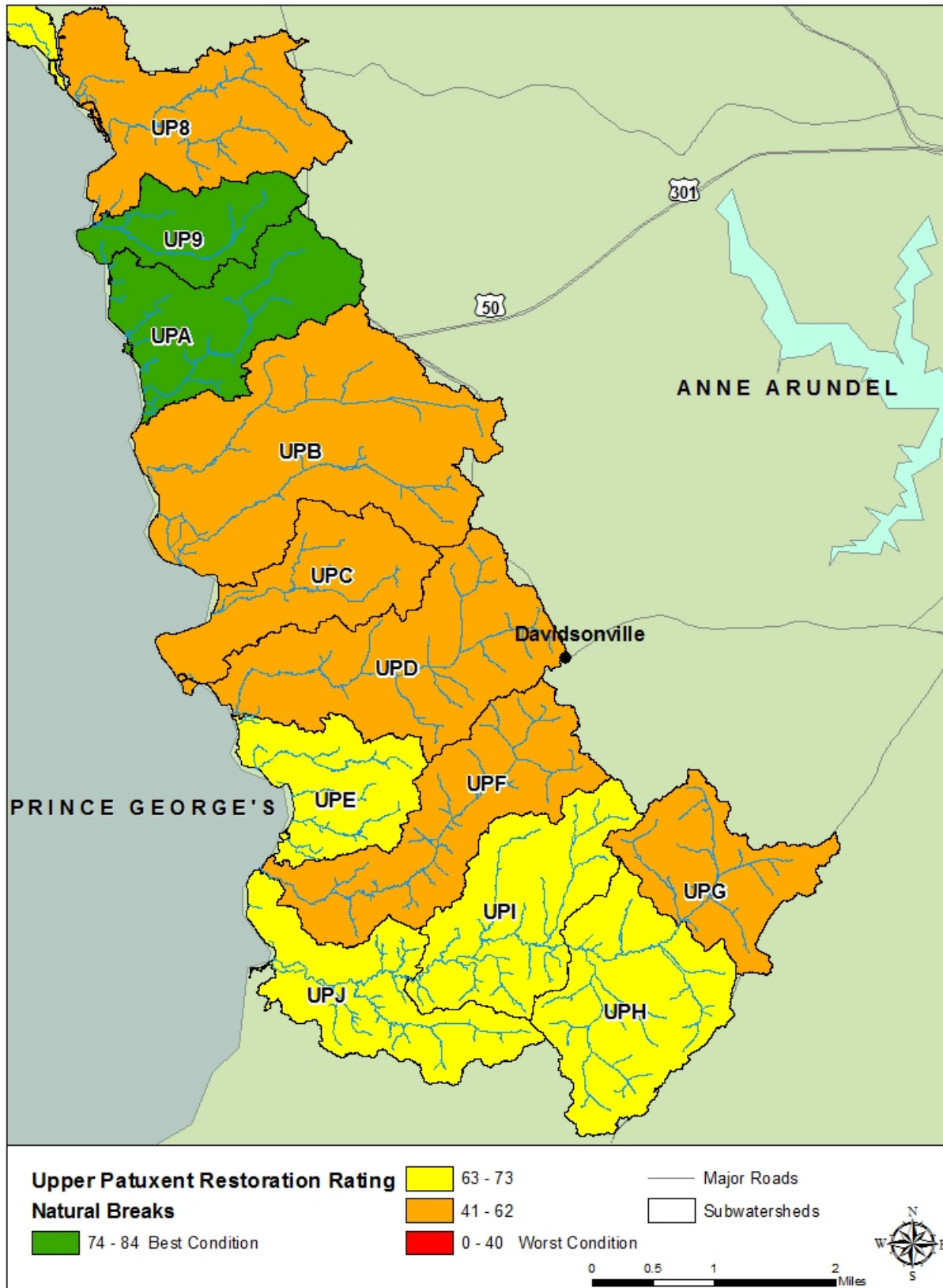


Figure 13: Subwatershed Restoration Assessment Results for the Upper Patuxent River Southern Section

8.3.3 Prioritization of Strategy Implementation

As stated in the Anne Arundel County's Phase II WIP, the County uses three major categories to classify urban stormwater strategies: Core Strategy Tier I, Core Strategy Tier II, and Potential Load Reductions Outside the Tier I and Tier II Core Strategy (Anne Arundel County, 2012). BMP planning and implementation will be prioritized based on these three categories with highest priority given to Tier I and Tier II strategies.

Core Urban Stormwater Strategy Tier I includes the following:

- Restoration of ephemeral and perennial streams with a Department of Natural Resources (DNR) Maryland Biological Stream Survey's (MBSS) Maryland Physical Habitat Index (MPHI) score of severely degraded or degraded,
- Implementing stormwater management treatment at currently untreated major pipe outfalls; and,
- Retrofitting stormwater management ponds built prior to 2002 to optimize the pollutant reduction and ecosystem functions for the facilities

Core Urban Stormwater Strategy Tier II includes additional pollutant reduction activities that must be implemented to meet the 2025 allocations; which includes the following:

- Monthly vacuum assisted street sweeping and associated inlet cleaning for all closed section roads,
- Reforestation plan for available public open space land; and,
- SW to the MEP retrofits for County-owned properties including recreation areas

Potential Load Reductions Outside the Tier I and Tier II Core Strategies includes the following:

- Focuses on the work of private citizens and Watershed Master Stewards in implementing SW to the MEP for residential rooftops, in high density areas, and for private commercial and industrial properties.
- These areas have been selected geographically outside the area treated by the WIP core strategy.

8.4 Implementation Strategy

Following the adoption of its Stormwater Remediation Fee in 2013 Anne Arundel County developed a 6-year Capital Improvement Program (CIP) in FY14 that created a Watershed Protection and Restoration Program (WPRP) Class of projects to implement those restoration projects identified in the County's Phase II WIP and applicable individual TMDLs for achieving stormwater WLAs. Funding for this class of projects averages 74 million dollars annually. Project in the WPRP Class were identified and prioritized through a planning level assessment and consist of restoration of ephemeral and perennial streams with a MBSS Maryland Physical Habitat Index (MPHI) score of severely degraded or degraded; implementation of stormwater/water quality treatment at currently untreated stormwater pipe outfalls (greater than 24 inches), and retrofit of stormwater management ponds built prior to 2002, with drainage areas in excess of 10 acres, to optimize pollutant reduction and ecosystem functions for the facilities. As WPRP projects are funded, more detailed feasibility and constructability assessments are conducted. These assessments may result in identifying projects previously thought to be implementable but due to a variety of reasons are not; or identifying additional and new opportunities for load reduction. As these feasibility assessments are completed the County incorporates these findings into its modeling, re-assesses anticipated load reductions and adapts its implementation

program to delete or add projects and amends its CIP accordingly. And, as BMP technologies and efficiencies change, programs mature, credit trading is enacted and new regulations put into place, the County will reassess and modify its restoration strategy in response.

9 Load Reduction Evaluation Criteria (h)

Adaptive management is a critical component of achieving the WLAs required by the *Total Maximum Daily Load of Sediment in the Patuxent River Upper Watershed, Anne Arundel, Howard and Prince George's Counties, Maryland, Approved by EPA September 30, 2011*. This TMDL has clearly established load reduction targets for sediment. 2-Year Implementation Milestones have been established by the County to provide interim planning targets and to serve as a vehicle for assessing progress toward the load reduction targets. Progress will be measured through three approaches: tracking implementation of management measures, estimating load reductions through modeling, and tracking overall program success through long term monitoring. Planning targets will be re-evaluated against progress and revised to ensure that Anne Arundel County is on track to meet established goals. Progress assessments are scheduled for 2017 and 2021, with 2025 set as the final date for achievement of load reductions.

The milestones proposed in Section 8: Implementation Milestones (2015, 2017, and 2021) provide interim planning targets. The planning targets will be used to reevaluate against progress and will be revised, if necessary, to ensure that Anne Arundel County continues to maintain TMDL requirements. Progress evaluation will be measured through three approaches: tracking implementation of management measures, estimating load reductions through modeling, and tracking overall program success through long term monitoring.

9.1 Tracking Implementation of Management Measures

Implementation will be measured by determining whether the targets for implementation shown in Table 16 are maintained according to the milestone schedule presented. Anne Arundel County manages a comprehensive system for adding and tracking projects and accounting for new programs. New BMPs constructed through new development and redevelopment projects are entered into the County's BMP database as they come on line. WPRP is responsible for implementing and tracking Water Quality Improvement Projects (WQIP; i.e., restoration and retrofit projects and programs). Additional internal County groups including Bureau of Highway Road Operation Division who are responsible for maintenance efforts (i.e., street sweeping and inlet cleaning) report back to WPRP. Another way the County is capturing and tracking projects is through the AAWSA. Watershed stewards can enter their own data and implementation projects through the WPRP website (www.aarivers.org). Once these data are reviewed and validated by the County, they are incorporated into the County's master list of environmental restoration projects.

Two-Year Milestone Reporting

As a part of the federal Chesapeake Bay Accountability Framework and in support of Maryland's BayStat accountability system, the County is required to report two-year milestones representing near-term commitments and progress to MDE towards achieving load reduction goals for the Bay TMDL. These efforts will also support local TMDL planning and tracking at the County level.

Milestones are reported in two forms: Programmatic and BMP Implementation. Programmatic milestones identify the anticipated establishment or enhancement of the institutional means that support and enable implementation. Examples of Programmatic milestones include projected funding,

enhancement of existing programs and resources, and the establishment of new programs and studies. The milestone period for Programmatic covers two calendar years – for example, the period for 2014 - 2015 is from January 1, 2014 through December 31, 2015. BMP Implementation milestones are a quantitative account of various types of restoration activities (e.g., structural BMPs, stream restoration, maintenance efforts), which have geo-located coordinates. The period for BMP implementation milestones differs from the Programmatic milestones period and covers two state fiscal years – for example, the period for 2014 – 2015 is from July 1, 2013 through June 30, 2015. Planned BMP Implementation milestones reported to MDE include the action (e.g., BMP type), proposed restoration over the 2-year milestone period (e.g., area treated, length restored), actual rate of implementation over 1 year, and percent progress.

The Programmatic and BMP Implementation milestone submittal and reporting process follows an iterative approach and includes three separate submittals to MDE. The first is an initial milestone submittal to MDE by January 31st of the first milestone calendar year (e.g., 2014), followed by an interim milestone progress report submittal by January 31st of the second milestone calendar year (e.g., 2015), and concluding with a final milestone progress submittal by January 31st of the start of the subsequent milestone period (e.g., 2016).

Annual NPDES Reporting

As a requirement of the NPDES permit described in Section 2.4.4, the County must submit on or before the anniversary date of the permit a progress report demonstrating the implementation of the NPDES stormwater program based on the fiscal year. If the County's annual report does not demonstrate compliance with their permit and show progress toward meeting WLAs, the County must implement BMP and program modifications within 12 months.

The annual report includes the following – items in bold font directly relate to elements of the load reduction evaluation criteria:

- a. The status of implementing the components of the stormwater management program that are established as permit conditions including:
 - i. Source Identification
 - ii. **Stormwater Management**
 - iii. Erosion and Sediment Control
 - iv. Illicit Discharge Detection and Elimination
 - v. Litter and Floatables
 - vi. Property Management and Maintenance
 - vii. Public Education
 - viii. Watershed Assessment
 - ix. **Restoration Plans**
 - x. **TMDL Compliance**
 - xi. Assessment of Controls; and,
 - xii. Program Funding
- b. **A narrative summary describing the results and analyses of data, including monitoring data that is accumulated throughout the reporting year**
- c. Expenditures for the reporting period and the proposed budget for the upcoming year
- d. A summary describing the number and nature of enforcement actions, inspections, and public education programs

- e. **The identification of water quality improvements and documentation of attainment and/or progress toward attainment of benchmarks and applicable WLAs developed under EPA approved TMDLs; and,**
- f. **The identification of any proposed changes to the County’s program when WLAs are not being met**
- g. Attachment A – The County is required to complete a database containing the following information:
 - i. Storm drain system mapping
 - ii. **Urban BMP locations**
 - iii. Impervious surfaces
 - iv. **Water quality improvement project locations**
 - v. **Monitoring site locations**
 - vi. **Chemical monitoring results**
 - vii. **Pollutant load reductions**
 - viii. **Biological and habitat monitoring**
 - ix. Illicit discharge detection and elimination activities
 - x. Erosion and sediment control, and **stormwater program information**
 - xi. Grading permit information
 - xii. Fiscal analyses – cost of NPDES related implementation

Financial Assurance Plan Reporting

The County’s Financial Assurance Plan (FAP) outlines the County’s financial ability to meet its local and Chesapeake Bay TMDL obligations. The FAP demonstrates the County’s ability to fund projects which will reduce pollutants of concern and make measureable progress towards improving water quality. Anne Arundel County’s first FAP was submitted to MDE in July of 2016, and will be updated every two years.

9.2 Estimating Load Reductions

Progress assessments are scheduled by the Chesapeake Bay Program for 2017 and 2021. At this time, multiple lines of evidence including: several models, monitoring data, and the most recent science on BMP effectiveness and water quality response will be evaluated. The milestones and progress assessments will contribute to constant reassessment of management plans, and adapting responses accordingly as technologies and efficiencies change, programs mature, credit trading is enacted, and regulations are put in place. The County will model load reductions in BayFAST at the interim (2014, 2016, 2018) and milestone (2015, 2017, 2019) years, which equates to about once a year at minimum.

9.3 Tracking Overall Program Success through Monitoring

Overall program success will be evaluated using trends identified through the long term monitoring program described below in Section 10: Monitoring. TMDL compliance status will be evaluated to determine if the Restoration Plan needs to be updated. If it is found during the evaluation of BMP implementation and load reductions that the milestone targets are no longer being met, a revision of the plan may be necessary.

9.4 Best Management Practices Inspection and Maintenance

Anne Arundel County has established policies and procedures in place for stormwater management facility inspection, maintenance and enforcement.

Background

Both the State and County SWM Codes require maintenance inspections be performed on all SWM practices during the first year of operation and every 3 years thereafter. The first year of operation inspections are performed by the Environmental Control Inspectors before Certificates of Completion is issued for the grading permits under which the practices were constructed. The 3-year maintenance inspections are the responsibility of the WPRP inspection staff.

Phase 1 Inspection and Enforcement

Phase 1 reflects the first time a SWM practice receives a 3-year maintenance inspection and maintenance is required. Using the proper Maintenance Inspection Checklists the Inspector performs the required 3-year maintenance inspection indicating on the Checklist boxes if maintenance is required, not required or the item is non-applicable. The information on the completed Checklist will serve to comply with the inspection requirements of COMAR 26.17.02.11 and be used to complete a Phase 1 Correction Notice issued in the field or mailed to the property owner. The Phase 1 Correction Notices shall be prepared using the I&P standard computerized inspection report software, contain a detailed description of the maintenance required and the compliance date by which the required maintenance is to be completed. If necessary Phase 1 Correction Notices can be completed by hand using the standard Environmental Programs Inspection Report Form. Phase 1 Correction Notices shall contain the proper contact information, be written in a clear and concise fashion with no speculation, editorial comments or superfluous information. The Urban BMP Database shall be updated to show a 3-year Maintenance Inspection was performed. For monthly reporting purposes, all re-inspections shall only be recorded as inspections and not as facilities inspected or as new correction notices issued. Depending on the degree of maintenance required, a Compliance Schedule may be appropriate. All proposed Compliance Schedules must be authorized by the WPRP Supervisor.

Phase 2 Inspection and Enforcement

Phase 2 reflects situations where Phase 1 Enforcement was not successful in obtaining compliance. Phase 2 Enforcement consists of a formal Phase 2 Violation Notice in the form of a certified letter to the property owner or responsible party. The Phase 2 Violation Notice shall be prepared by the WPRP Inspector using the appropriate form letter, reviewed by the WPRP Supervisor/Environmental Code Administrator as appropriate and signed by the WPRP Supervisor. The Phase 2 Notice shall establish final compliance dates for the completion of the required maintenance. The final compliance dates may reflect agreed upon Compliance Schedules as authorized by the WPRP Supervisor.

Phase 3 Inspection and Enforcement

Phase 3 reflects situations where Phase 2 Enforcement was not successful in obtaining compliance. Phase 3 enforcement consists of a legal referral to the Office of Law for the enforcement of the Private Inspection and Maintenance Agreement recorded against the deed for the property in question. The referral shall be prepared by the Environmental Code Administrator using the records associated with the violation.

10 Monitoring (i)

Official monitoring for Integrated Report assessments and impairment status is the responsibility of the State; however the County has many on-going monitoring programs that can support the State's efforts.

To determine the specific parameters to be monitored for tracking progress, one must understand the approach used for the initial listing. The Upper Patuxent was originally listed for sediments in 1996 as a total suspended solids/sediment listing. In 2002, the State began listing biological impairments on the Integrated Report, at the 8-digit scale, based on a percentage of stream miles degraded and whether they differ significantly from a reference condition watershed (<10% stream miles degraded). The biological listing is based on Benthic and Fish Indices of Biotic Integrity (BIBI/FIBI) results from wadeable streams from assessments conducted by the Maryland Department of Natural Resources (MDNR) Maryland Biological Stream Survey (MBSS). The Upper Patuxent was listed for biological community impairment in 2006.

MDE then utilized its Biological Stressor Identification (BSID) process to identify the probable or most likely causes of poor biological conditions. For sediment specifically, the BSID identified 'altered hydrology and increased urban runoff have resulted in degradation to streambed morphology, streambed scouring, and subsequent elevated suspended sediment transport through the watershed.' Overall, the results indicated inorganic pollutants (i.e. chlorides, acute ammonia, sulfate), and flow/sediment related stressors as the primary stressors causing impacts to biological communities.

Based on the results of the BSID, MDE replaced the biological impairment listing with a listing for total suspended solids (TSS). The 2012 final and 2014 draft integrated reports lists 'Habitat Evaluation' as the indicator, and urban runoff/storm sewers as the source. It is noted that the *Decision Methodology for Solids for the April 2002 Water Quality Inventory (updated in February of 2012)*¹, makes a specific distinction between two different, although related 'sediment' impairment types in free flowing streams:

1. **TSS:** The first type is an impact to water clarity with impairment due to TSS using turbidity measured in Nephelometer Turbidity Units (NTUs). Although numeric criteria have not been established in Maryland for TSS, MDE uses a threshold for turbidity, a measurement of water clarity, of a maximum of 150 Nephelometer Turbidity Units (NTU's) and maximum monthly average of 50 NTU as stated in Maryland COMAR regulations (26.08.02.03-3). Turbidity also may not exceed levels detrimental to aquatic life in Use I designated waters.
2. **Sedimentation / siltation:** The second type is an impact related to erosional and depositional impacts in wadeable streams. The measures used are biocriteria and the criteria for Use I streams (the protection of aquatic life and growth and propagation of fish (other than trout) and other aquatic life).

With these two sediment impairments in mind the Upper Patuxent, which is listed as impaired for TSS, would seem to be water clarity issue; however the methodology used for listing (biological and habitat measures related sediment deposition) seems to point to an in-stream sediment deposition problem. In

¹http://www.mde.state.md.us/programs/Water/TMDL/Integrated303dReports/Documents/Assessment_Methodologies/AM_Solids_2012.pdf

all likelihood both types of impairment, water clarity and sedimentation, are factors and both should be incorporated into monitoring programs to track changes in the watershed condition over time.

Anne Arundel County's Watershed Protection and Restoration Program (WPRP) has several on-going monitoring programs that target measures of water clarity and sedimentation. These programs are described here.

Countywide Biological Monitoring

In 2004, a Countywide Biological Monitoring and Assessment Program for Anne Arundel County, Maryland was developed to assess the biological condition of the County's streams at multiple scales (i.e., site-specific, primary sampling unit (PSU), and countywide). Under the Countywide Biological Monitoring and Assessment program, biology (i.e., benthic macroinvertebrates) and stream habitat, as well as geomorphological and water quality parameters, are assessed at approximately 240 sites throughout the entire County over a 5-year period using a probabilistic, rotating-basin design. Round One of the County's Biological Monitoring and Assessment Program occurred between 2004 and 2008, and Round Two took place between 2009 and 2013. Round Three is scheduled to be conducted beginning in 2016.

The biological monitoring program's stated goals are applicable at three scales; Countywide, Watershed-wide, and Stream-specific, and include the following components.

- Status: describe the overall stream condition
- Trends: how has the overall stream condition changed over time
- Problem identification/prioritization: identify the impaired and most degraded streams
- Stressor-response relationships: identify anthropogenic stressors and their biological response
- Evaluation of environmental management activities: monitor the success of implemented programs and restoration/retrofit projects

The Upper Patuxent watershed is made up of three PSUs: Upper Patuxent, Middle Patuxent, and Stocketts Run. Ten sampling sites were sampled in each of these PSUs in each round of sampling. Methodologies follow those used by MBSS for the biological sampling (benthic macroinvertebrates only) and habitat evaluations have included both MBSS's Physical Habitat Index (PHI) and the EPA's Rapid Bioassessment Protocol (RBP) metrics. In-situ water quality measures are also collected at each site along with a geomorphic evaluation utilizing cross-sections, particle substrate analysis using pebble counts, and measures of channel slope.

Following these procedures, the County is collecting several parameters related to water clarity and sediment deposition at each site.

- Water Quality Measures and Observations
 - Turbidity (measured), observations of general water clarity and color
- Biological Measures
 - Benthic macroinvertebrates (BIBI)
- Habitat Measures
 - General: bar formation and substrate, presence/absence of substrate type
 - PHI: epibenthic substrate, instream habitat

- RBP: epifaunal substrate / available cover, pool substrate characterization, sediment deposition, channel alteration
- Geomorphic Measures
 - Particle size analysis using modified Wolman pebble counts at 10 transects proportioned by channel bed features

Results summarized at the PSU scale with mean BIBI and habitat ratings (PHI and RBP) are presented in Table 21.

Table 21: Countywide Biological Monitoring Results for Upper Patuxent River

PSU Name	Round	PSU Code	Year Sampled	Drainage Area (acres)	BIBI Rating	PHI Rating	RBP Rating
Upper Patuxent	1	16	2007	6,957	P	PD	PS
Middle Patuxent	1	18	2004	6,332	P	PD	S
Stocketts Run	1	19	2005	8,714	F	PD	PS
Upper Patuxent	2	16	2011	6,957	P	MD	S
Middle Patuxent	2	18	2010	6,332	F	PD	PS
Stocketts Run	2	19	2013	8,714	P	PD	PS

BIBI Ratings: G = Good, F = Fair, P = Poor, VP = Very Poor

PHI Ratings: MD = Minimally Degraded, PD = Partially Degraded, D = Degraded, SD = Severely Degraded

RBP Ratings: C = Comparable, S = Supporting, PS = Partially Supporting, NS = Non-Supporting

Restoration Monitoring

To evaluate management activities, the County uses assessment methods similar to the Countywide program (biological monitoring, water chemistry sampling, physical habitat, geomorphic evaluation) to assess baseline and post-restoration conditions for select stream, wetland and stormwater restoration and retrofit sites. In addition, these techniques are utilized to meet several NPDES MS4 permit monitoring requirements, particularly related to Assessment of Controls and Watershed Restoration Assessment.

Watershed Assessment

In 2001, Anne Arundel County initiated a series of systematic and comprehensive watershed assessments and management plans for restoration and protection across the County. The plans are developed within a regulatory context that includes NPDES MS4 requirements, local TMDLs and Watershed Implementation Plans for the Chesapeake Bay TMDL, Maryland Stormwater Regulations and the Water Resources Element of the County's General Development Plan.

Biological monitoring is a component of the characterization and prioritization process within the management plans. The biological monitoring data is primarily utilized in the County's Watershed Management Tool (WMT), which is developed and maintained by the WPRP. Within this program, sampling sites are selected using a targeted approach with the goal of having at least one, and sometimes two sites located within each subwatershed planning unit in order to examine the relationships between land use and ecological conditions downstream. Monitoring components include

benthic macroinvertebrate community sampling, *in situ* water chemistry measurements, and instream and riparian physical habitat condition assessments. Water quality grab sampling and detailed geomorphic assessments have been included for some watershed studies, but not as routine monitoring components.

The WAP program's stated goals include:

- Characterize subwatersheds;
- Prioritize subwatersheds for preservation and restoration; and
- Inform stressor-response relationships for planning and modeling.

The County continues to reevaluate its monitoring programs as the state of the science progresses, as the understanding of water quality and ecological interactions are improved, and as regulatory programs are added or modified. The WPRP is currently reviewing the Countywide monitoring program to ensure that the methods used are appropriate and meaningful, and that TMDL and NPDES requirements continue to be met.

11 References

- Anne Arundel County. 2009. General Development Plan. Adopted October 19, 2009; Bill No. 64-09. Annapolis, MD.
- Anne Arundel County. 2010. Stormwater Management Practices and Procedures Manual. Revised November 22, 2010; updated February 1, 2012. Annapolis, MD.
- Anne Arundel County. 2008. Upper Patuxent River Watershed Overall Summary Recommendation Report. Prepared by Anne Arundel County Watershed Assessment and Planning Program, Annapolis MD; LimnoTech, Washington D.C.
- Anne Arundel County. 2012. Anne Arundel County Government Chesapeake Bay TMDL Phase II Watershed Implementation Plan – July 2, 2012. Annapolis, MD.
- Anne Arundel County, Department of Public Works. 2015. FY15 Enhanced Street Sweeping Program. Annapolis, MD.
- CWP. 2003. Impacts of impervious cover on aquatic ecosystems. Center for Watershed Protection, Ellicott City, Maryland. 142p.
- CWP. 2008. Deriving Reliable Pollutant Removal Rates for Municipal Street Sweeping and Storm Drain Cleanout Programs in the Chesapeake Bay Basin. Prepared by the Center for Watershed Protection, Ellicott City, MD. Prepared for U.S. EPA as fulfillment of the U.S. EPA Chesapeake Bay Program grant CB-973222-01.
- House Bill 987. 2012. State of Maryland General Assembly. Annapolis, MD
- MDE. Code of Maryland Regulations (COMAR). Continuously updated. Code of Maryland Regulations, Title 26- Department of the Environment. 26.08.02.01- Water Quality.
- MDE. 2010. Watershed Report for Biological Impairment of the Patuxent River Upper Watershed in Anne Arundel, Prince Georges, Montgomery, and Howard Counties, Maryland – Biological Stressor Identification Analysis Results and Interpretation. Maryland Department of the Environment, Baltimore, MD. Prepared for Water Protection Division, U.S. Environmental Protection Agency, Region III. Philadelphia, PA.
- MDE. 2011. Total Maximum Daily Loads of Sediment in the Patuxent River Upper Watershed, Anne Arundel, Howard and Prince George’s Counties, Maryland. Maryland Department of the Environment. Prepared for Water Protection Division, U.S. Environmental Protection Agency, Region III. Baltimore, MD.
- MDE. 2012a. Maryland's Final 2012 Integrated Report of Surface Water Quality. Maryland Department of the Environment. Baltimore, MD. Online at: http://www.mde.state.md.us/programs/Water/TMDL/Integrated303dReports/Pages/2012_IR.aspx
- MDE. 2012b. Decision Methodology for Solids for the April 2002 Water Quality Inventory (updated in February of 2012).

http://www.mde.state.md.us/programs/Water/TMDL/Integrated303dReports/Documents/Assessment_Methodologies/AM_Solids_2012.pdf

MDE. 2014a. Maryland's Draft 2014 Integrated Report of Surface Water Quality. Maryland Department of the Environment. Baltimore, MD. Online at: <http://www.mde.state.md.us/programs/Water/TMDL/Integrated303dReports/Pages/2014IR.aspx>

MDE. 2014b. General Guidance for Developing a Stormwater Wasteload Allocation (SW-WLA) Implementation Plan. Maryland Department of the Environment. October 2014. Baltimore, MD.

MDE 2014c. Accounting for Stormwater Wasteload Allocations and Impervious Acres Treated – Guidance for National Pollutant Discharge Elimination System Stormwater Permits. Maryland Department of the Environment. August 2014. Baltimore, MD.

Rosgen, D.L. 1996. Applied River Morphology (Second Edition). Wildland Hydrology. Pagosa Springs, CO.

Scueler, T.R. 1987. Controlling urban runoff: a practical manual for planning and designing urban BMPs. Metropolitan Washington Council of Governments. Washington, D.C.

Schueler, T. 1994. The importance of imperviousness. Watershed Protection Techniques, 1(3), 100-111.

Simpson, T., and S. Weammert. 2009. Developing Best Management Practice Definitions and Effectiveness Estimates for Nitrogen, Phosphorus, and Sediment in the Chesapeake Bay Watershed. December 2009. University of Maryland Mid-Atlantic Water Program.

USEPA. 2001. PLOAD Version 3.0, An ArcView Tool to Calculate Nonpoint Sources of Pollution in Watershed and Stormwater Projects. January 2001. Developed by CH2M HILL.

USEPA. 2010. Chesapeake Bay Total Maximum Daily Load for Nitrogen, Phosphorus and Sediment, December 29, 2010. U.S. Environmental Protection Agency in collaboration with Delaware, the District of Columbia, Maryland, New York, Pennsylvania, Virginia, and West Virginia. Region 3 - Chesapeake Bay Program Field Office. Annapolis, MD.

<http://www.epa.gov/reg3wapd/tmdl/ChesapeakeBay/tmdlexec.html>

Appendix A: Upper Patuxent Project List

Upper Patuxent River Sediment TMDL Restoration Plan

Appendix A - Upper Patuxent Project List

Status	StormID# or TBD# or Outfall #	Watershed (8- digit Number)	Watershed (8-digit Name)	BMP Type	Drainage Area [acres]	Impervious Drainage Area [acres]	Pervious Drainage Area [acres]	Linear Feet for Stream Restoration	Annual Report Fiscal Year (completed projects only)	Estimated Completion Fiscal Year
Construction Complete	179	02131104	Patuxent River Upper	Bioretention	0.06	0.06	0.00		FY2013	
Construction Complete	164	02131104	Patuxent River Upper	Rain Barrel	0.02	0.02	0.00		FY2013	
Construction Complete	411	02131104	Patuxent River Upper	Rain Barrel	0.02	0.01	0.00		FY2013	
Construction Complete	415	02131104	Patuxent River Upper	Rain Barrel	0.01	0.01	0.00		FY2013	
Construction Complete	562	02131104	Patuxent River Upper	Rain Barrel	0.01	0.01	0.00		FY2013	
Construction Complete	563	02131104	Patuxent River Upper	Rain Barrel	0.01	0.01	0.00		FY2013	
Construction Complete	4	02131104	Patuxent River Upper	Stream Stabilization				950	FY2013	
Construction Complete	337	02131104	Patuxent River Upper	Stream Stabilization				1000	FY2013	
Construction Complete	27	02131104	Patuxent River Upper	Stream Restoration				1800	FY2013	
In Planning	32	02131104	Patuxent River Upper	Step Pool Stormwater Conveyance & Stream Restoration				450		FY2017
Under Construction	816	02131104	Patuxent River Upper	Wet Pond	22.16	5.42	16.74			FY2017
In Design	471	02131104	Patuxent River Upper	Sand Filter	10.02	1.96	8.06			FY2018
In Planning	B120007	02131104	Patuxent River Upper	Step Pool Stormwater Conveyance	20.46	8.36	12.10			FY2018
In Planning	B120006	02131104	Patuxent River Upper	Step Pool Stormwater Conveyance	6.29	2.94	3.35			FY2018
In Planning	19	02131104	Patuxent River Upper	Stream Restoration				800		FY2019
In Planning	AA000816	02131104	Patuxent River Upper	Micropool Extended Detention Pond	22.30	4.70	17.60			TBD

Appendix B: Public Comment Period Documentation

Addendum

Public Comments

The Upper Patuxent River Sediment TMDL Restoration Plan, Anne Arundel County, Maryland was posted on the County's web page and advertised for public comment in the *Maryland Gazette* and *The Capital* newspapers from September 28, 2016 through October 28, 2016. A copy of the Public Comment Notice and the Capital newspaper advertisement are provided on the following pages.

No public comments were received.

Notice of Public Comment on TMDL Restoration Plans Anne Arundel County Department of Public Works Watershed Protection and Restoration Program

General information

Public comment period begins: September 28, 2016

Public comment period ends: 4:30 p.m. on October 28, 2016

WPRP contact person:

Ginger Ellis, Planning Administrator

2662 Riva Road, MS#7409

Annapolis, MD 21401

Fax: 410-222-0759

E-mail: pwelli16@aacounty.org

The Anne Arundel County Department of Public Works (DPW) Watershed Protection and Restoration Program (WPRP) has developed restoration plans to address local water quality impairments for watersheds with an approved Total Maximum Daily Load (TMDL) issued by the Maryland Department of the Environment (MDE) and approved by the U.S. Environmental Protection Agency (EPA). As defined by EPA, a TMDL sets a maximum load of a specific pollutant or stressor that a water body can assimilate and still meet water quality standards for its designated use.

Per the requirements of its National Pollutant Discharge Elimination System (NPDES) Municipal Separate Storm Sewer System (MS4) permit (11-DP- 3316, MD0068306), Anne Arundel County has developed the following restoration plans to address specific TMDL's as required:

- **"Baltimore Harbor Watershed Nutrient TMDL Restoration Plan"**
- **"Little Patuxent River Sediment TMDL Restoration Plan"**
- **"Patapsco River Lower North Branch Sediment TMDL Restoration Plan"**
- **"Upper Patuxent River Sediment TMDL Restoration Plan"**

WPRP invites comments from the public on the above proposed TMDL restoration plans. The draft TMDL restoration plans are available for review on the Anne Arundel County Watershed Protection and Restoration Program's website at <http://www.aarivers.org> and can be inspected at the physical address listed above.

Only written comments will be accepted, no phone calls please. The public comment period will end at 4:30 p.m. on October 28, 2016. Written comments should include: title of TMDL restoration plan, name, address, and telephone number of the person submitting the comments and should be mailed to WPRP Attn: Ginger Ellis, Planning Administrator, 2662 Riva Road, MS#7409, Annapolis, MD 21401, faxed to WPRP Attn: Ginger Ellis at 410-222-7059, or e-mailed to pwelli16@aacounty.org.

LEGAL NOTICES

Notice of Public Comment on TMDL Restoration Plans Anne Arundel County Department of Public Works Watershed Protection and Restoration Program

General information

Public comment period begins: September 28, 2016
Public comment period ends: 4:30 p.m. on October 28, 2016

WPRP contact person:

Ginger Ellis, Planning Administrator
2662 Riva Road, MS#7409
Annapolis, MD 21401
Fax: 410-222-0759
E-mail: pwelli16@aacounty.org

The Anne Arundel County Department of Public Works (DPW) Watershed Protection and Restoration Program (WPRP) has developed restoration plans to address local water quality impairments for watersheds with an approved Total Maximum Daily Load (TMDL) issued by the Maryland Department of the Environment (MDE) and approved by the U.S. Environmental Protection Agency (EPA). As defined by EPA, a TMDL sets a maximum load of a specific pollutant or stressor that a water body can assimilate and still meet water quality standards for its designated use.

Per the requirements of its National Pollutant Discharge Elimination System (NPDES) Municipal Separate Storm Sewer System (MS4) permit (11-DP- 3316, MD0068306), Anne Arundel County has developed the following restoration plans to address specific TMDL's as required:

- "Baltimore Harbor Watershed Nutrient TMDL Restoration Plan"
- "Little Patuxent River Sediment TMDL Restoration Plan"
- "Patapsco River Lower North Branch Sediment TMDL Restoration Plan"
- "Upper Patuxent River Sediment TMDL Restoration Plan"

WPRP invites comments from the public on the above proposed TMDL restoration plans. The draft TMDL restoration plans are available for review on the Anne Arundel County Watershed Protection and Restoration Program's website at <http://www.aarivers.org> and can be inspected at the physical address listed above.

Only written comments will be accepted, no phone calls please. The public comment period will end at 4:30 p.m. on October 28, 2016. Written comments should include: title of TMDL restoration plan, name, address, and telephone number of the person submitting the comments and should be mailed to WPRP Attn: Ginger Ellis, Planning Administrator, 2662 Riva Road, MS#7409, Annapolis, MD 21401, faxed to WPRP Attn: Ginger Ellis at 410-222-7059, or e-mailed to pwelli16@aacounty.org.
4484883
CAP/MD 40/018 September 28

NOTICE OF HEARINGS REZONINGS, CRITICAL AREA RECLASSIFICATIONS OR DECLASSIFICATIONS, SPECIAL EXCEPTIONS, VARIANCES AND ADMINISTRATIVE ANNE ARUNDEL COUNTY, MARYLAND

The following cases will be heard before the **BOARD OF APPEALS** in the Council Chambers, Arundel Center, 44 Calvert Street, Annapolis, Maryland. *Individuals who need special accommodation should call 410-222-1119 (TTY 410-222-4355) at least seven working days before a hearing.*

Wednesday, October 5, 2016 at 3:30 p.m., BA 11-16A (1978-0016-N) Michael A. Spiegel and Karen J. Leva (CD 5) an appeal of the denial of a change in use request for a current nonconforming use allowing commercial waterman activities on property known as 725 Red Cedar Rd., Annapolis.

Tuesday, October 11, 2016 at 6:30 p.m., BA 25-16R (2016-0029-R) BA 26-16R (2016-0076-R) Brock Bridge Land Holding Company, LLC, et al. (AD 4, CD 1) an appeal of the denial of a zoning reclassification from R1-Residential to C1-Local Commercial District on properties compris-

ANNE ARUNDEL COUNTY, MARYLAND Annapolis, Maryland ANNOUNCEMENT NOTICE TO BIDDERS

Specifications and Bid Proposals for providing the subject item(s) are available at the Purchasing Office, Heritage Office Complex, 2660 Riva Road, 3rd Floor, Annapolis, Maryland 21401. Bids will be received until time/date shown for bid(s) listed below, at the same location, after which they will be publicly opened and read in the **Patuxent Room**, located on the same floor. **Bids received after the time set for opening will be rejected**

**Due by 1:30 p.m. Local Time
Tuesday, October 11, 2016**

IFB No. 16-127

Trailers

Contact: Stephen Ports, 410-222-7665

**Due by 1:30 p.m. Local Time
Tuesday, October 25, 2016**

IFB No. 16-129

All-Terrain Utility Vehicles

Contact: Stacey Sells, 410-222-7646

**Due by 1:30 p.m. Local Time
Tuesday, November 1, 2016**

IFB No. 16-116

Signs, Traffic

Contact: Casandra Daniels, 410-222-7666

CAP/MD 40/016 Sept 28 4484865

NOTICE IN THE CIRCUIT COURT FOR ANNE ARUNDEL COUNTY Case No. C-02-CV-15-003505-FC

LAURA H.G. O'SULLIVAN, ET AL., Substitute
Trustees
Versus
MAURICE BRISCOE, ANDREA F. BRISCOE
AKA ANDREA FAYA BRISCOE, RUDY BRISCOE
AKA RUDY TYRONE BRISCOE
Defendants

Notice is hereby issued this Tuesday, September 13, 2016 that the sale of the property in the proceedings mentioned, made and reported by Rachel Kiefer, Esq., Substitute Trustee(s). BE RATIFIED AND CONFIRMED, unless cause to the contrary thereof be shown on or before the 13th day of October 2016 next; Provided, a copy of this Notice be inserted in some newspaper published in Anne Arundel County, once in each of three successive weeks before the 13th day of October 2016 next.

The report states that the amount of sale of the property at 905 BEECH TREE ROAD, SEVERN, MD 21144 to be \$195,822.75.

Robert P. Duckworth
Clerk

True Copy
TEST:

Robert P. Duckworth
Clerk

CAP 39/023 Sept. 21, 28 - Oct. 5 4467607

NOTICE FOR PUBLICATION OF NAME CHANGE

IN THE CIRCUIT COURT FOR
ANNE ARUNDEL COUNTY
Civil No.
C-02-FM-16-003603

IN THE MATTER OF:
DAMAR LLEWELLYN JOHNSON
FOR CHANGE OF NAME TO:
JEREMIAH LLEWELLYN PARKER

The Petitioner Kiera D Smith has filed a Petition to change the name of a minor child, from DAMAR LLEWELLYN JOHNSON to JEREMIAH LLEWELLYN PARKER

To be published in the Capital Newspaper on 9/28/2016. The reason for this request is: A DNA test was performed and the alleged father was proven not to be the biological father and has not been involved with child since 2012.

Any person may file an objection to the Petition on or before the 13TH Day of OCTOBER, 2016 Such objection must be supported by an affidavit made on personal knowledge and served upon the Petitioner in accordance with Maryland Rule 1-321.

Robert P. Duckworth
Clerk

True Copy
TEST:

Robert P. Duckworth
Clerk

4459431

NOTICE FOR PUBLICATION (MINOR)

IN THE CIRCUIT COURT FOR
ANNE ARUNDEL COUNTY
CIVIL NO. C-02-FM-16-003604-NC

IN THE MATTER OF:
Christopher Stanley Okosun, Jr.
FOR CHANGE OF NAME TO:
Christopher Sam Junior Onwuka
