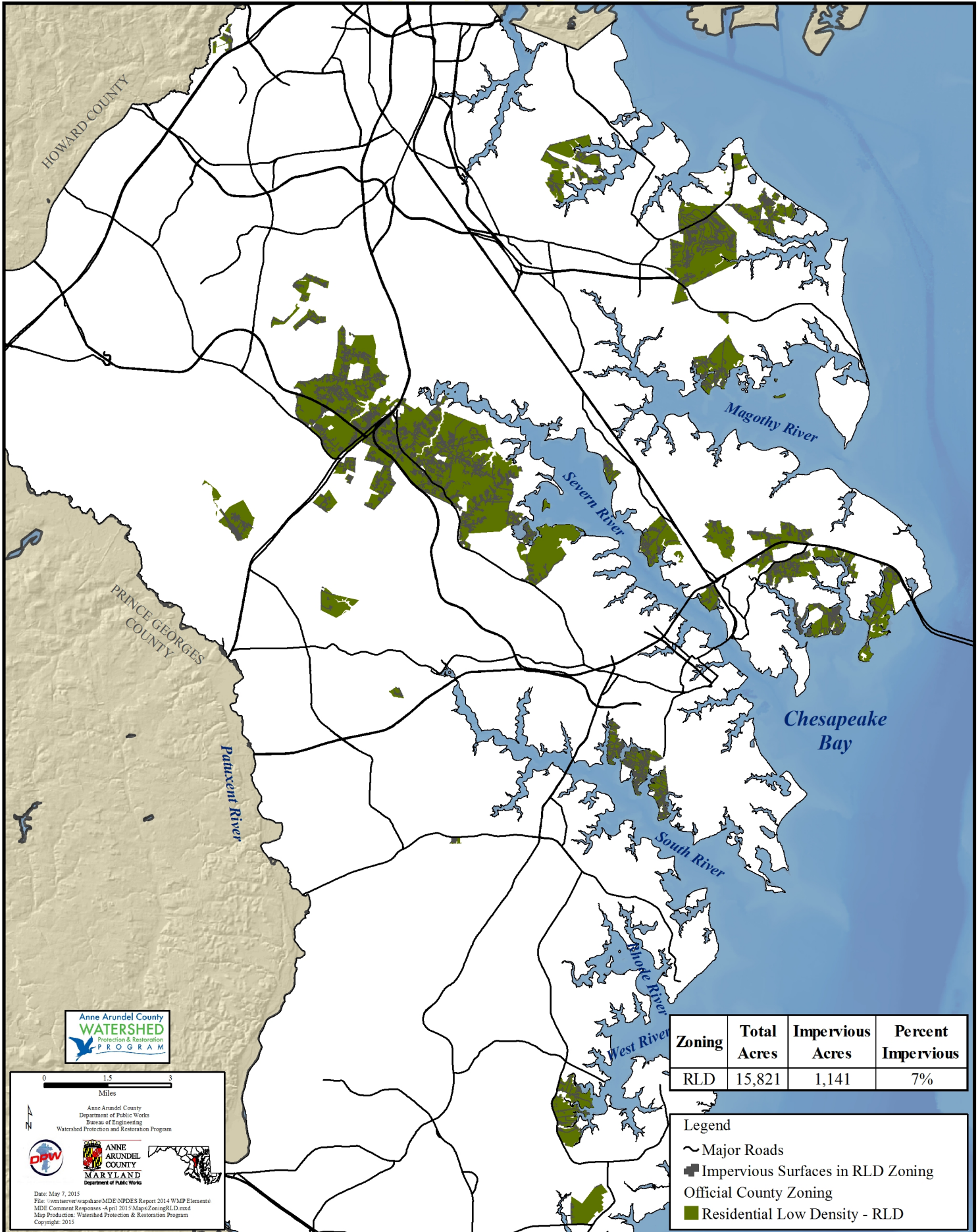


Anne Arundel County Residential Low Density (RLD) Zoning with Impervious Surfaces

MAP 5



Zoning	Total Acres	Impervious Acres	Percent Impervious
RLD	15,821	1,141	7%

- Legend
- ~ Major Roads
 - Impervious Surfaces in RLD Zoning
 - Official County Zoning
 - Residential Low Density - RLD

0 1.5 3
Miles

Anne Arundel County
Department of Public Works
Bureau of Engineering
Watershed Protection and Restoration Program

Date: May 7, 2015
 File: \\waterserver\wqshare\MDE\NPDES Report 2014\WMP Elements
 MDE Comment Responses - April 2015\Maps\ZoningRLD.mxd
 Map Production: Watershed Protection & Restoration Program
 Copyright: 2015