

**ANNE ARUNDEL COUNTY
ILLICIT DISCHARGE DETECTION
AND ELIMINATION PROGRAM REPORT:
July 2023 – June 2024 (Fiscal Year 2024)**



Prepared for

Anne Arundel County
Department of Public Works
Bureau of Watershed Protection and Restoration
2662 Riva Road
Annapolis, MD 21401

Prepared by

KCI Technologies, Inc.
936 Ridgebrook Road
Sparks, MD 21152

October 2024

TABLE OF CONTENTS

	Page
1.0 INTRODUCTION	5
2.0 IDDE SCREENING METHODS	7
2.1 FIELD SCREEENING/OUTFALL ASSESSMENT	7
2.2 DRY WEATHER DISCHARGE	7
2.3 INFRASTRUCTURE MAINTENANCE AND REPAIR	8
2.4 UPLAND POLLUTION	8
3.0 RESULTS	10
3.1 OUTFALL SCREENING	10
3.2 INFRASTRUCTURE CONDITIONS	11
3.3 COMMERCIAL AND INDUSTRIAL FACILITY INSPECTIONS	12
3.4 COUNTY-OWNED PROPERTIES.....	15
3.5 SPECIAL INVESTIGATION.....	16
4.0 SUMMARY	18
5.0 ENFORCEMENT ACTIONS	19
6.0 REFERENCES	42

APPENDIX A | Illicit Discharge Reports Submitted by KCI to Anne Arundel County
APPENDIX B | Infrastructure Condition Reports Submitted by KCI to Anne Arundel County
APPENDIX C | Upland Pollution Source Reports Submitted by KCI to Anne Arundel County
APPENDIX D | Anne Arundel County Compliance Database Reports
APPENDIX E | IDDE Program Maps
APPENDIX F | MDE Administrative Penalties

LIST OF TABLES

Table No.	Page
Table 2.1 – Illicit Discharges Threshold Limits	7
Table 3.1 – Summary of Potential Illicit Discharges Identified During FY2024.....	10
Table 3.2 – Infrastructure Repair And Maintenance Report Summary For FY2024	11
Table 3.3 – Summary of Upland Pollutant Source Findings For FY2024.....	12
Table 3.4 – Summary Of County-Owned Property Inspection Findings For FY2024.....	16
Table 3.5 – Summary Of Special Investigation Inspection Findings For FY2024.....	17
Table 4.1 – Summary Of Outfall Conditions And Observations Made During The FY2024 Field Screening.....	19
Table 5.1 – FY2024 IDDE Program Investigative Activies and Follow-Up Actions	21
Table 5.2 – Ongoing Investigative Actions from Previous Reporting Years	38

1.0 INTRODUCTION

As required in Anne Arundel County's National Pollutant Discharge Elimination System (NPDES) stormwater discharge permit (Permit No. 20-DP-3316, MD0068306), the County is required to investigate and eliminate pollutant sources contributing to the Municipal Separate Storm Sewer System (MS4) from within the County's permit administration area. The purpose of the County's Illicit Discharge Detection and Elimination (IDDE) Program is to identify and eliminate non-permitted, non-stormwater discharges, and potential pollutant sources to the MS4 and to surface water. These discharges can be hazardous to public health, harmful to aquatic life in receiving waters, and damaging to water quality. Dry weather screening is performed on County MS4 outfalls that are identified in a specific target area of the County each year. The field screening includes an outfall assessment, dry weather discharge assessment, infrastructure condition assessment, and an upland pollution assessment.

Anne Arundel County's Bureau of Watershed Protection and Restoration (BWPR) designated KCI Technologies, Inc. (KCI) as the consultant on contract to conduct IDDE outfall inspections for the County during the Fiscal Year (FY) 2024 reporting period (July 1, 2023 to June 30, 2024). As stipulated by permit conditions, KCI screened a minimum of 150 outfalls within the County's NPDES permit administration area within the County's target screening area for FY2024. KCI adhered to Anne Arundel County Bureau of Watershed Protection and Restoration's Illicit Discharge Detection and Elimination Standard Operating Procedures (SOP) for Consultants and BWPR Staff (KCI 2023) for the outfall field screenings. According to the established protocols, KCI inspectors noted outfall attributes, infrastructure conditions, and evidence of dry weather flows, if present, at all outfalls selected as target sites, as defined below. If dry weather discharge was present, inspectors documented conditions relevant to the discharge and prepared to collect and test the effluent for a defined set of chemical constituents. If test results or visual observations indicated potential illicit connections, the crew investigated the drainage network contributing to the outfall and the surrounding areas to identify any possible sources of pollution, including any upland pollution sources. The crews also committed to a return visit to the outfall within 4-24 hours to re-test for the parameters that had values exceeding criteria for the initial test. If the second inspection also indicated test results out of the acceptable ranges, KCI staff alerted County personnel via a written report of the findings and called the County's Environmental Hotline. After results are determined to be outside of acceptable ranges, the field crew followed the storm drain system upstream to attempt to identify the upland source of contaminant(s). County staff then continued the process with appropriate measures to abate violations.

For the 2024 reporting period, KCI targeted 172 outfalls for field screening following Anne Arundel County Bureau of Watershed Protection and Restoration's Illicit Discharge Detection and Elimination Standard Operating Procedures (SOP) for Consultants and BWPR Staff (KCI 2023). Priority outfalls for selection were those that were 12" or greater in pipe diameter and predominantly drain commercial and industrial areas located within a geographical target area boundary predetermined by the County and KCI. This ensured that the screened outfalls were located within the target areas of the County that have the highest potential for pollution. The County aims for approximately 75% of the total number of screened outfalls to drain commercial/industrial land uses. In addition to the criteria above, outfalls with suspected or

known violations from the last reporting year were prioritized for this year. The 172 targeted sites were located in northern Anne Arundel County defined by the County boundary to the north, I-97/I-695 to the west, and Benfield Rd/Magothy Bridge Rd/Mountain Rd to the south. The target area included portions of MD Routes 10, 100, and 173 in the vicinity of Glen Burnie, Pasadena, Green Haven, South Gate, and Brooklyn Park.

2.0 IDDE SCREENING METHODS

2.1 FIELD SCREENING/OUTFALL ASSESSMENT

Per Anne Arundel County’s protocols (KCI 2023), a two-person KCI field team performed outfall inspections after a minimum of 72 hours of dry weather (defined as periods with less than 0.1 inches of total rainfall). Each outfall was inspected for the following: signs of physical deterioration (cracking, separation, or disintegration of infrastructure); verification of outfall configuration, dimensions, and position; and any evidence of dry-weather discharge. A digital photograph was taken at every inspected outfall. Outfall dimensions and flow measurements were recorded in the field using a tape measure in inches.

In addition to the outfall’s attributes and condition, the outfalls were also inspected for the following physical parameters: deposits and staining, algal growth, vegetative condition, odors present, erosion, floatables, color and clarity of discharge. Deposits and staining can indicate previous illicit discharges and may require further investigation. Algal growth may indicate the presence of nutrients or sewage in the discharge and may require further investigation. Vegetative growth could be indicative of excessive nutrients if there is excessive growth, or the presence of a chemical if growth is inhibited. Any odors that were detected out of ordinary required further investigation. In addition, erosion was assessed within 25 feet of the outfall.

2.2 DRY WEATHER DISCHARGE

If outfalls were found to be flowing during inspection, the discharge was tested using a Hach Storm Drain Test Kit for chlorine, detergents, copper, and phenols, a Hanna Medium Range Ammonia Colorimeter test kit was used to test for ammonia-nitrogen, and a Hanna Low Range Fluoride Colorimeter was used to test for fluorides. Temperature and pH were measured at the time of sample collection with a Hach Pocket Pro probe. Results of the inspections were recorded within Field Maps and Survey123.

If the discharge had a concentration above the threshold limit for chlorine, phenols, copper, detergents, fluorides, or ammonia, inspectors revisited the site and retested after 4 hours, but within 24 hours, to verify the result. *Dry Weather Flow and Illicit Discharges in Maryland Storm Drain Systems* (MDE, 1997) provides threshold concentrations for these constituents. Measurements above the threshold (on both tests) are considered indicative of an illicit discharge. The thresholds followed are listed below:

Constituents	Threshold Value (ppm)
Phenol	0.17
Chlorine	0.4
Copper	0.21
Detergents	0.5
Fluoride	0.75
Ammonia	1.0

An appropriate range for pH is 6.5 to 8.5. Since areas with coastal plain geography can have naturally acidic groundwater conditions, recordings of pH values between 5.0 and 6.5 were not considered illicit if all other parameters were within acceptable limits. Areas of coastal plain geography can also show characteristically high prevalence of iron flocculent bacteria that feed on the naturally occurring iron in groundwater. Iron flocculent can foul the water sample due to the suspended material and a bacterial sheen. Significant iron flocculent bacteria within a tested dry weather discharge can cause the ammonia results to be elevated and can be considered the source if all other parameters are within acceptable limits and no other sources are found in the upstream network.

If the discharge was determined to be illicit, the field team followed the storm drain system upstream to attempt to identify the source of the pollutant. In order to track illicit discharges in the storm drain system, staff followed the flow path through the network using storm drain mapping. If a discharge source was identified, or if the source could not be definitively determined but the illicit discharge was actively occurring, the field team immediately contacted the County's Environmental Hotline to report the violation and request appropriate action. If the discharge was determined not to be illicit, a source was still tracked with the findings recorded in Field Maps and Survey123. For any outfalls containing a possible illicit connection, a concise, site-specific Illicit Discharge report was prepared and sent to the County Permit Coordinator and IDDE Project manager within 5 working days of the discovery.

2.3 INFRASTRUCTURE MAINTENANCE AND REPAIR

Inspections adhered to section 3 of Anne Arundel County Bureau of Watershed Protection and Restoration's Illicit Discharge Detection and Elimination Standard Operating Procedures (SOP) for Consultants and BWPR Staff (KCI 2023). Field crews assessed the structural condition at each outfall by inspecting the pipe and surrounding area at the outfall. Common issues identified included concrete spalling and cracking, metal corrosion, pipe and structure separations, excess debris, and/or sediment, scour holes, and erosion. All outfalls with structural issues were documented using Survey123.

For any outfalls with immediate physical maintenance needs, a concise, site-specific Infrastructure Condition report with photographs was prepared and sent to the County Permit Coordinator and IDDE Project Manager within 5 working days after the discovery. Each report contained the County Outfall number, location, a written description of the site and identified issues, location map with labeled streets and identifying features on an aerial photo, and site photographs documenting the conditions at the site.

2.4 UPLAND POLLUTION

For discharges that were either non-detectable at the outfall, do not drain to a closed storm drain system at any accessible commercial and industrial areas, or were originating from properties owned by the County not subject to the Maryland General Permit for Stormwater Discharge from Industrial Facilities within the targeted area, upland pollutant sources were identified when possible. All documented industrial and commercial areas in the targeted area of the County were identified to be inspected. If an upland pollutant source was identified, then a

point feature was created in Field Maps and a Survey123 form was filled out. In addition, when upland pollutant sources were identified, a site-specific Upland Pollutant Source Report with photographs and locational information was prepared and sent to the County Permit Coordinator and IDDE Project Manager within five (5) working days of the discovery.

3.0 RESULTS

3.1 OUTFALL SCREENING

KCI staff inspected a total of 172 outfalls during the reporting period of July 2023 to June 2024. The inspections were conducted in November 2023 through February 2024. A map of the 172 outfall inspections and Industrial/Commercial target areas can be found in Appendix E.

The results show that, of the 172 sites, forty-two (42) sites had sufficient dry weather flow to collect a sample. No detectable concentrations of phenols or copper were recorded at the outfalls where flow was sampled. Thirteen (13) outfalls contained chlorine below the threshold concentration, seven (7) outfalls contained detergents below the threshold, twenty-six (26) outfalls contained ammonia below the threshold concentration, and twenty-nine (29) outfalls contained fluoride below the threshold concentration. Four (4) outfalls were found to contain illicit discharges during the reporting period. A chemical summary can be found in the Table below. Site-specific reports for the four (4) outfalls can be found in Appendix A.

Table 3.1 – Summary of Potential Illicit Discharges Identified During FY2024								
Outfall	Date of Test	Chlorine (mg/L)	Copper (mg/L)	Phenols (mg/L)	Detergents (mg/L)	Ammonia (mg/L)	Fluoride (mg/L)	pH
M08C8O00003	11/16/2023	1.0	0	0	0.1	0	2.00	8.3
M08C8O00003	11/20/2023	1.5	0	0	0.2	0.72	1.78	7.8
B11G7O00012	12/15/2023	0	0	0	0	3.6	0	7.4
N05G3O00001	02/09/2024	0.3	0	0	0.05	3.0	0	7.3
O04A8O00001	02/09/2024	0	0	0	0	3.0	0.41	7.2
Bold = exceeds action criteria threshold								

M08C8O00003

Outfall M08C8O00003 was found actively flowing by the KCI field team with a faint chlorine smell. Fluoride and chlorine were elevated at the outfall. The discharge was traced to an upstream manhole with multiple pipes. The flow appeared to be originating from one pipe going under the UM Baltimore Washington Medical Center. During the second reinspection, there was a trickle flow that was too small to sample. A third and fourth inspection were performed a couple days later with elevated fluoride and chlorine levels again. The source of the discharge was thought to be coming from the medical center.

B11G7O00012

The KCI field team discovered a potential water quality issue at Outfall B11G7O00012. The outfall tested high for ammonia and a grey sheen could be seen on the surface. A reinspection was performed later that day with the same results. The flow was traced to an upstream inlet where a pool of water was. No specific source for the discharge could be found, but there could possibly be an illicit connection tied to the Travelodge laundry activities.

N05G3O00001

Outfall N05G3O00001 was found with stagnant water. A sample was taken at a flowing upstream section. A pipe draining from the Northern Recycling Center had a trickle flow. A high ammonia reading was taken. Upon a revisit, the same conditions were found. Staff investigated the source and found standing water with algae from a swale, but no other contributing factors. The ammonia concentrations are thought to be attributed to groundwater and other organic materials from upstream recycling operations.

O04A8O00001

The KCI field team discovered a potential water quality issue at Outfall O04A8O00001. The outfall tested high for ammonia. The outfall had a large amount of iron flocculent from the barrel. Upon a reinspection, the ammonia levels had remained the same. The flow was traced to upstream inlets with standing water slowly releasing into a SWM pond by DC Scientific, Inc. The ammonia concentrations may be attributed to the presence of iron flocculent bacteria in the groundwater. The first upstream structure had a cracked lid and a portion had fallen into the manhole.

3.2 INFRASTRUCTURE CONDITIONS

Significant maintenance needs of stormwater infrastructure were noted at seven (7) outfalls. Site-specific reports for the outfalls experiencing significant infrastructure issues are detailed below and can be found in Appendix B.

Table 3.2 – Infrastructure Repair And Maintenance Report Summary For FY2024				
Location	Town	Outfall ID	Inspection Date	Issue
8378 Veterans Hwy	Millersville	M11A3O00001	11/15/2023	Pipe collapse and erosion
305 Hospital Dr	Glen Burnie	M08C8O00011	11/16/2023	Upstream erosion and barrel corrosion
150 Penrod Ct #D	Glen Burnie	M06C1O00001	11/30/2023	Unstable soil and pipe separation
575 E Ordnance Rd	Glen Burnie	N04E7O00008	12/01/2023	Pipe separation and erosion
1405 Rowe Dr	Glen Burnie	M05B5O00001	02/08/2024	Metal end sections fully detached and barrel corrosion
116 N Jerome Pkwy	Glen Burnie	N07C7O00001	02/08/2024	First upstream structure being undermined
7726 Baltimore Annapolis Blvd	Glen Burnie	N07G8O00030	02/08/2024	First upstream structure with cover offset

8378 Veterans Highway – Outfall M11A3O00001

KCI identified erosion around the outfall resulting in the pipe fully detaching. The banks downstream of the outfalls are also eroding.

305 Hospital Drive – Outfall M08C8O00011

KCI identified major erosion surrounding the outfall. The pipe is fully exposed with a concrete slab laying on top. The bituminous coating of the pipe is degrading, and parts of

the barrel are corroding. The banks downstream are also eroding.

150 Penrod Court #D – Outfall M06C1O00001

KCI identified unstable soil around the outfall and slope erosion. There is pipe separation causing the outfall to undermine from discharging water. The banks downstream of the outfall are also eroding.

575 E Ordnance Road – Outfall N04E7O00008

KCI identified pipe separation causing undermining and erosion around the outfall.

1405 Rowe Drive – Outfall M05B5O00001

KCI identified the corrugated metal barrel corroding and the metal end sections fully detached from the barrel.

116 N Jerome Parkway – Outfall N07C7O00001

KCI identified the soil and riprap underneath the first upstream structure of Outfall N07C7O00001 was eroding and undermining the concrete.

7726 Baltimore Annapolis Boulevard – Outfall N07G8O00030

KCI identified the first upstream structure to Outfall N07G8O00030 had the metal cover unbolted and offset, exposing the manhole opening.

3.3 COMMERCIAL AND INDUSTRIAL FACILITY INSPECTIONS

A total of 332 commercial and industrial property polygons were visually surveyed in the reporting year. Two hundred ninety-two (292) of the identified commercial/industrial polygons represented commercial land uses, and forty (40) represented industrial land uses. A map of the visually surveyed commercial and industrial target areas can be found in Appendix E. During July 2023 – June 2024, there were nineteen (19) cases of upland pollution related to water quality that were reported to BWPR. Each report was investigated and resolved using Anne Arundel County staff, MDE, and other state agencies. A summary of the findings is listed below with the site-specific reports found in Appendix C.

Table 3.3 – Summary of Upland Pollutant Source Findings For FY2024				
Address	Town	Business Name	Inspection Date	Issue
33 Magothy Beach Rd #100	Pasadena	Mutiny Scratch Bar & Fresh Bar	11/06/2023	Kitchen grease staining
8095A Edwin Raynor Blvd	Pasadena	Green Valley Marketplace	11/07/2023	Grease bin and dumpster washing

Table 3.3 – Summary of Upland Pollutant Source Findings For FY2024

Address	Town	Business Name	Inspection Date	Issue
8098 Edwin Raynor Blvd	Pasadena	Wendy's	11/07/2023	Dumpster staining
3101 Mountain Rd	Pasadena	Pasadena Pre-owned	11/07/2023	Active vehicle washing outside
350 Mountain Rd	Pasadena	Food Lion – Mountain Market Place	11/07/2023	Kitchen grease staining and excess trash dumping
8026 Ritchie Hwy Suite B	Pasadena	Oscar's Alehouse East	11/08/2023	Dumpster staining and sudsy fluids
8541 Veterans Hwy	Millersville	Libations	11/09/2023	Kitchen grease spill and staining
7951 Nolpark Ct	Glen Burnie	Target	11/16/2023	Public dumping
7497 Baltimore-Annapolis Blvd	Glen Burnie	Glen Burnie Town Center	11/30/2023	Potable water connection leaks
7514 Ritchie Hwy	Glen Burnie	La Fontaine Bleue	11/30/2023	Uncovered construction material
8971 Fort Smallwood Rd	Pasadena	El Cabrito Mexican Grill	12/07/2023	Kitchen grease staining
7490 Ashmore Ave	Glen Burnie	Tanyard Cove Community Clubhouse	12/21/2023	Uncovered salt pile
8111 Fort Smallwood Rd	Curtis Bay	Pizza Crown	12/21/2023	Kitchen grease staining
6650 Governor Ritchie Hwy	Glen Burnie	Lowe's	02/08/2024	Uncovered salt pile
5107 Ritchie Hwy	Brooklyn Park	Dollar General	02/08/2024	Public dumping
105 Chesapeake Center Ct	Glen Burnie	Sidelines Sports Bar and Grill	02/08/2024	Kitchen grease staining and buildup
720 Church St	Brooklyn	Village Liquors	02/08/2024	Overflow trash pile from dumpsters
5507 Ritchie Hwy Ste D	Brooklyn Park	Domino's Pizza	02/08/2024	Overflow trash from dumpsters
100 Holsum Way	Glen Burnie	Glen Burnie Car Wash	02/08/2024	Evidence of vehicle washing outside

Mutiny Scratch Bar & Fresh Bar

KCI inspectors discovered extensive grease staining around the trash dumpsters and grease bin area assumed to be from Mutiny Scratch Bar & Fresh Bar at 33 Magothy Beach Road.

Green Valley Marketplace

KCI inspectors discovered employees actively washing the grease bin and dumpsters with no storm drain controls in place at the Green Valley Marketplace located at 8095A Edwin Raynor Boulevard. A rainbow sheen was observed in the wash water.

Wendy's

The KCI inspectors discovered heavy staining in the dumpster containment area and in the parking lot at the Wendy's located at 8098 Edwin Raynor Boulevard. The source of the staining is unknown.

Pasadena Pre-Owned

KCI discovered employees actively washing cars in the Pasadena Pre-owned lot located at 3101 Mountain Road. The soap was running off into Margaret Avenue and MD 177.

Food Lion – Mountain Market Place

KCI discovered kitchen grease staining behind the Food Lion at Mountain Market Place located at 350 Mountain Road. There were also two curb cuts filled with trash.

Oscar's Alehouse East

KCI discovered heavy pavement staining and fluids from the dumpster area in the parking lot near Oscar's Alehouse East at 8026 Ritchie Highway Suite B.

Libations

KCI discovered kitchen grease spill in the dumpster containment at Libations located at 8541 Veterans Highway. The fence of the dumpster containment is stained black, indicating an ongoing grease issue.

Target

The KCI inspectors found evidence of public dumping at a donation bin near Target on 7951 Nolpark Court.

Glen Burnie Town Center

KCI discovered a potable water line leak around the businesses at Delaware Avenue and Baltimore-Annapolis Boulevard. Several connection areas were leaking water onto the streets and inlets. Ice melt pellets were being used to prevent the pooling water from freezing.

La Fontaine Bleue

The KCI field team discovered construction materials uncovered with no erosion or sediment controls in front of La Fontaine Bleue at 7514 Ritchie Highway.

El Cabrito Mexican Grill

KCI discovered a recently washed down grease bin with heavy pavement staining behind El Cabrito Mexican Grill located at 8971 Fort Smallwood Road.

Tanyard Cove Community Clubhouse

KCI discovered an uncovered salt stockpile on the side of the Tanyard Cove Community Clubhouse located at 7490 Ashmore Avenue. No controls were observed to prevent material runoff during storms.

Pizza Crown

The KCI inspectors found heavy pavement staining from the open grease bin behind Pizza Crown located at 8111 Fort Smallwood Road.

Lowe's

KCI discovered an uncovered salt stockpile on the side of the Lowe's located at 6650 Governor Ritchie Highway. No controls were observed to prevent material runoff during storms.

Dollar General

KCI discovered public dumping along the fence line of the Dollar General located at 5107 Ritchie Highway. Large quantities of smaller pieces of trash and larger wood pieces.

Sidelines Sports Bar & Grill

KCI discovered grease stains around the grease bins behind Sidelines Sports Bar & Grill at 105 Chesapeake Center Court. Some grease had solidified on the top of one of the grease bins.

Village Liquors

KCI found overflow of trash and building materials along the back of the Village Liquors located at 720 Church Street.

Domino's Pizza

KCI discovered evidence of an overflowing dumpster behind Domino's Pizza at 5507 Ritchie Highway Suite D.

Glen Burnie Car Wash

KCI discovered an employee actively pre-washing cars in the lot at the Glen Burnie Car Wash located at 100 Holsum Way. No inlets surrounding the business were wet. It is believed that the car wash has their own drainage system for wash water.

3.4 COUNTY-OWNED PROPERTIES

KCI inspectors additionally screened eleven (11) County-owned properties located within the target area for FY2024. County site managers as well as on-site staff accompanied KCI inspectors for each inspection; therefore, conditions were documented but no reports filed for any potential violations discovered.

Table 3.4 – Summary Of County-Owned Property Inspection Findings For FY2024				
Address	Town	Business Name	Inspection Date	Issue
3725 Mountain Rd	Pasadena	Fire Company 10 – Jacobsville Fire Station	02/07/2024	No violations observed
7549 Solley Rd	Glen Burnie	Fire Company 11 – Orchard Beach Fire Station	02/09/2024	Inlet blocked with sediment and debris
7726 Baltimore Annapolis Blvd	Glen Burnie	Fire Company 18	02/09/2024	No violations observed
4642 Mountain Rd	Pasadena	Fire Company 20	02/07/2024	No violations observed
7880 South Crain Hwy	Glen Burnie	Fire Company 26 – South Glen Burnie Fire Station	02/09/2024	No violations observed
304 Mountain Rd	Pasadena	Fire Company 30 - Armiger Fire Station	02/07/2024	No violations observed
8495 Veterans Hwy	Millersville	Police Headquarters	02/09/2024	No violations observed
204 Pasadena Rd	Pasadena	Police Eastern District	02/07/2024	Washdown activity
411 Maxwell Frye Rd	Millersville	Animal Care and Control	02/09/2024	No violations observed
8501 Veterans Hwy	Millersville	Anne Arundel County Fire Department	02/09/2024	No violations observed
415 Maxwell Frye Rd	Millersville	Anner Arundel County Fire Department Training Academy	02/09/2024	Improper bulk storage

3.5 SPECIAL INVESTIGATION

Anne Arundel County requested KCI and I&P to investigate several sites for reports of illicit discharge. Four (4) reports were made for these investigations.

Table 3.5 – Summary Of Special Investigation Inspection Findings For FY2023

Address	Town	Outfall ID	Inspection Date	Issue
8449 Ft. Smallwood Road	Pasadena	N/A	8/29/2023	Improper storage of used automotive fluids
1183 Annapolis Rd	Odenton	SHA-Owned Infrastructure	3/24/2024	Bright teal discharge with high detergents
670 MD-3	Gambrills	SHA-Owned Infrastructure	2/29/2024	Purple colored discharge with a chemical odor from carwash
1156 Mainsail Drive	Annapolis	N/A	12/18/2023	Possible oil spill in Lake Ogleton

Riviera Beach Shell Station

On August 29, 2023, BWPR staff were made aware of a citizen complaint of improper storage/disposal of used automotive fluids at a service station located at 8449 Ft. Smallwood Road in Pasadena, MD. BWPR staff requested that KCI perform an upland pollution screening. I&P staff inspected the property on August 31, 2023. I&P staff spoke with the service station manager about the storage of automotive oil and fluids on the side of the building. The fluids used by the service station are stored in 55-gallon drums, which were all sealed correctly; I&P staff did not observe any leaking containers. The 5-gallon buckets and other containers present are not used by the station, but instead are dropped off there by people in the surrounding neighborhood. The service station manager does not condone this and has placed signs on the property building to try and deter people from dropping off the containers. With no active leaking from the large drums, it appears the staining on the asphalt is evidence of old spills/leaks coming from the containers that have been dropped off by other people. I&P requested that the station manager put down oil absorbent to try and clean up any staining on the asphalt. I&P staff performed a follow-up inspection on September 14, 2023. Oil staining had been cleaned up with absorbent to the best of the service manager’s ability. No evidence of active leaks in the current drums on site, and no evidence of recent active leaks in the grassy area or parking lot area behind this building were observed.

On December 7, 2023 KCI staff inspected the property and were unable to find any violations.

Odenton Soft Cloth Car Wash

Compliance Case # E-2024-133

On March 24, 2024, BWPR staff received correspondence identifying an illicit discharge of teal-colored water into a tributary to Picture Spring Branch in Odenton. The discharge was observed coming from an outfall associated with a culvert under Route 175 (Annapolis Rd) that was presumed to be owned by Maryland State Highway Administration (SHA). Two consulting firms, one working for SHA and the other for the County were on-site performing work unrelated to IDDE and identified this illicit discharge.

SHA sent a consultant to perform screening at this outfall on March 26, 2024 as a follow-up to the initial report. The SHA consultant observed the teal-colored flow, tested the discharge, and found the level of detergents to be 1.39 mg/L. Other IDDE tests (phenols, pH, chlorine, and copper) were below the thresholds used by SHA for their IDDE program. The source of this discharge was tracked upstream to a car wash located at 1183 Annapolis Rd in Odenton, MD.

Detergent laden wash water was observed flowing out of the car wash, draining into the parking lot and entering the nearby storm drain inlets where it ultimately discharged to this outfall and tributary to Picture Spring Branch.

I&P staff initially visited the site on March 27, 2024. It was raining during the inspection and the car wash was not operating at the time of the visit. Flow was observed at the outfall but chlorine and detergent tests were both 0 mg/L. On March 28, 2024 I&P issued a Correction Notice to cease operations until they have their wash water containment and reclamation system serviced in order to ensure that it is functional and not becoming overwhelmed. I&P also informed the car wash that they need to ensure their self-serve customers keep their vehicles centered over the grates in the self-serve bays.

I&P staff performed a follow-up inspection on May 20, 2024 and noted that the car wash had cleaned all underground washwater storage tanks and serviced the reclamation system. All systems were observed to be working functionally.

Gambrills Car Wash/Primrose School

Compliance Case # E-2024-84

MDE case # 232194

On February 29, 2023 BWPR staff were informed by MDE of a complaint regarding discharge of discolored water to small tributary to Jabez Branch behind 670 MD-3, Gambrills, MD. I&P were notified and dispatched staff to meet on-site with MDE staff to investigate. Investigators observed purple-colored water in the stream as well as a strong chemical odor. Investigators were able to determine the source of the discharge to be a nearby commercial car wash operation. Upon speaking with the car wash manager, it was determined that the car wash's water reclamation system had failed. Car wash operations were ceased immediately. Later that day, the manager of the car wash informed I&P staff that they were currently having the water reclamation system drained via vactor truck and would have the system serviced and repaired before resuming operations. A follow-up inspection was conducted by I&P staff on March 19, 2023; the inspector noted the repairs to the water reclamation system and verified that outgoing water was in compliance with discharge criteria.

Ogleton Dr. Oil Spill

Compliance Case # E-2024-664

MDE case # 201879

On December 18, 2023 BWPR staff were informed by MDE of a reported ongoing oil spill within the waters of Lake Ogleton near the Marina at 1156 Mainsail Drive, Annapolis. BWPR requested an investigation from I&P staff, who met with MDE staff on-site later that morning. I&P and MDE inspectors investigated the shoreline and pier around the marina and found no evidence of spills, leaks, or illicit discharge. No oil or sheen was observed on the water surface. Inspectors investigated multiple other areas around the lake but no evidence of an oil leak or spill was observed.

4.0 SUMMARY

To assist with Anne Arundel County's Illicit Discharge Detection and Elimination

program and to fulfill the requirements of the County’s NPDES permit requirements, KCI inspected 172 outfalls and visually assessed 332 commercial and industrial property polygons for the 2024 reporting year. The table below summarizes the findings of the 172 outfalls inspected based on the observations made. Fifty-nine (59) outfalls were found to be totally or partially submerged or contained standing water with no flow. Algae were found at forty-three (43) outfalls. Seven (7) outfalls had a color variation. Several outfalls contained trash and/or sediment deposition. Moderate erosion was occurring at sixteen (16) outfalls and severe erosion was occurring at another three (3) outfalls. As mentioned above, there were five (5) potential illicit discharges detected, seven (7) structural repair and maintenance reports submitted, and nineteen (19) upland pollutant reports submitted.

Table 4.1 – Summary Of Outfall Conditions And Observations Made During The FY2023 Field Screening.	
Condition	Number of Outfalls
Observable Flow	42
Phenol Present	0
Chlorine Present	19
Detergents Present	11
Copper Present	0
Ammonia Present	40
Fluoride Present	35
Excessive Vegetation	1
Algae Growth	43
Floatables Present	31
Sediment Deposits	65
Other Deposits	9
Moderate Erosion	16
Severe Erosion	3
Odor Present	10
Color Present	7
Cloudy Clarity	0

5.0 ENFORCEMENT ACTIONS

Table 5.1 details all illicit discharge, upland pollution, and infrastructure concerns arising from the permit-required dry-weather screening of outfalls and routine visual surveys of commercial and industrial drainage areas during the reporting year. As is presented in Table 5.1, significant findings from the FY2024 field investigations were sent to the responsible authorities for action. Site-specific reports of potential illicit connections and upland pollutant sources (e.g., leaking or overflowing dumpsters) identified during the investigations for the FY2024 reporting period were referred to either the County’s Department of Inspections and Permits (I&P) or the Department of Health. Structural issues identified during the reporting period were forwarded to the County’s Stormwater Infrastructure Program (SIP) to determine ownership of the infrastructure; then, SIP or I&P addressed the problems based on whether the infrastructure was publicly or privately owned, respectively.

Occasionally, complex cases from prior reporting periods were not resolved in time for a particular year's summary report; such cases are typically reported as unresolved. Table 5.2 contains details of FY2024 enforcement actions taken on previously unresolved IDDE program cases.

In FY2024 I&P responded to an additional 30 complaints related to potential illicit discharges. Details of these complaints and County staff actions are provided in Appendix D, which contains inspection compliance database reports from the I&P Case Manager Complaint Tracking System for illicit connections, upland pollutant sources, or environmental hotline complaints relevant to this report. These reports detail County efforts taken to investigate and remediate the complaints.

I&P applies a progressive approach to enforcement regarding illicit discharges. In general, Phase I enforcement begins with coordination with MDE, as applicable, for joint investigation. If the violator has an active 12-SW permit, MDE takes over full enforcement authority. If no 12-SW permit is active, I&P will issue a Correction Notice to violator to address violation within timeframe specific to type of incident. If violation still exists upon follow-up inspection, I&P will issue a second Correction Notice. If the violation still exists after two Correction Notices, I&P may issue a third Correction Notice or proceed with Phase II enforcement, which entails issuing a Violation Letter and Non-Compliance Notice, sent to the violator via certified mail. If the violation has still not been addressed upon follow-up inspections, I&P will proceed with Phase III enforcement which includes filing a legal injunction through the County's Office of Law and may issue a civil citation with Class C fines based on the County's Civil Fines Schedule. No civil citations were issued by I&P in FY2024 for violations stemming from IDDE-related surveys.

The Anne Arundel County Department of Health may choose to issue civil citations for violations of the Anne Arundel County Property Maintenance Code regarding rubbish, garbage, or sanitation. Before the issuance of a citation, property owners are issued a written warning in the form of a Notice of Violation, giving the property owner 30 days to correct the violations before legal action is taken. If violations are not corrected following the issuance of a Notice of Violations, a citation may be issued. After a citation is issued, it is attempted to be served by a third-party server. Upon service, the property owner has 20 days to pay the fine and correct the violation, or 15 days to elect - via written response - to stand trial. After 20 days have passed since the initial inspection, the property is re-inspected for compliance. If the citation was unable to be served, the property is re-inspected immediately after receiving notice it was unable to be served. If violations remain at that point, the Department of Health may file for injunction. Once a citation or injunction is referred to the Office of Law, the property is re-inspected every 30 days until the trial date or until the violation is corrected. Two civil citations were issued by the Department of Health in FY2024 for violations stemming from IDDE-related surveys; both citations were nol-prossed after violations were corrected.

In FY2024, BWPR was made aware of four administrative penalties issued by MDE for illegal discharges to storm drains within Anne Arundel County. To date, BWPR is aware that the liable parties in two of these cases have settled with MDE, paying fines totaling \$6,000. Further information regarding these cases can be found in Appendix G.

Table 5.1. FY2024 IDDE Program investigative activities and follow-up actions.

ILLICIT DISCHARGES					
Survey Date	I&P Compliance Database ID	Outfall/Site Address	Issue	Response	Status
11/16/2023	E-2023-655	Outfall M08C8O0003 301 Hospital Dr, Glen Burnie, MD 21061	<p>On November 16, 2023, while performing IDDE outfall inspections for Anne Arundel County, KCI Technologies, Inc. discovered a potential illicit discharge with high chlorine and fluoride levels discharging from Outfall M08C8O00003 across from the UM Baltimore Washington Medical Center at 301 Hospital Dr, Glen Burnie, MD 21061. There was steady flow out of the outfall. The discharge was clear with a soapy residue. An IDDE test was conducted. Chlorine (1.0 mg/L) and fluoride (2.00 mg/L) were found to be above the screening thresholds. A small amount of detergent (0.1mg/L) was detected along with a faint chlorine odor. Foam was noted at the outfall as well. The discharge was tracked to the first upstream manhole structure, which contained one discharging pipe. The flow appears to be originating from the pipe that goes under the medical building. All other upstream structures were dry. A reinspection of this outfall was performed on November 17, 2023, in which two visits were made to this outfall. During both visits, the flow was a trickle and too small to collect a sample so a test couldn't be conducted. The outfall had visible foam at the rip rap again and the discharge was clear. The source of the discharge was originating from the same location as the first test.</p> <p>A reinspection of this outfall was performed on November 20, 2023, in which two inspections were performed at 12:50 PM and 5:30 PM. During both inspections chlorine (1.5mg/L and 0.65 mg/L) and fluoride (1.78mg/L and 0.96mg/L) levels were above the screening thresholds. Ammonia and detergents were elevated as well, though not above threshold. Both samples had a chlorinated odor. Foam was still present at the outfall, though the amount was lower than the November 16 visit. The source of the discharge was originating from the same location as the first test. The surrounding inlets and trench drains were inspected, and all were dry.</p>	<p>11/16/2023: KCI reported illicit discharge to environmental hotline. 11/20/2023: Follow up inspection by KCI (details in narrative.) 11/22/2023: Report received from KCI 11/29/2023: Report forwarded to I&P 11/29/2023: Investigated by I&P. Inspector located the outfall that was tested and the manhole mentioned in the KCI report, opened manhole in question and confirmed dry weather flow coming from a pipe, which appears to be coming from the direction of the loading dock/hospital building. Inspector made contact with one of the building mechanics and was referred to facility plumbing specialist; inspector left message for plumber to arrange meeting to locate the pipe in question. 12/8/2023: Follow up investigation by I&P and KCI. Pole mounted camera used in the manhole by the loading dock. Based on the grading plans (Permit #G02011539) for the "New Patient Tower" team confirmed 3 of the 4 incoming pipes (15" RCP from Inlet I-1, 24" RCP from Inlet I-2, and 8" ductile iron from the loading dock trench drain via pump pit). The 4th incoming pipe appears to be ductile iron and about 12" to 15" in diameter.</p>	RESOLVED

ILLCIT DISCHARGES

Survey Date	I&P Compliance Database ID	Outfall/Site Address	Issue	Response	Status
	E-2023-655 (cont.)			<p>pipe (same pipe from the initial investigation). Building staff believes this pipe is for the roof drains and cooling tower. Team went inside and confirmed the stormwater pipes along the ceiling and also where it turns out of the building. Building staff stated that the cooling tower water is treated for legionella bacteria – he will find out what exactly the cooling tower water is treated with; he also mentioned the cooling tower was recently drained for the winter and will find out the date this happened (this may have coincided with KCI’s initial outfall screening. Inspector requested plans for the cooling tower and associated discharge piping and inquired if the facility has any documentation from MDE on a discharge permit for this type of water.</p> <p>2/7/2024: Dry weather flow observed by I&P staff. Not enough flow to gather sample.</p> <p>4/9/2024: Dry weather flow observed by I&P staff. Not enough flow to gather sample.</p> <p>4/10/2024: Email rec’d by I&P from lead building engineer. Claims cooling tower was overflowing into roof drain causing dry weather discharge; claims water in cooling tower sumps is not treated before draining occurs, may contain Cl.</p>	

ILLICIT DISCHARGES

Survey Date	I&P Compliance Database ID	Outfall/Site Address	Issue	Response	Status
	E-2023-655 (cont.)			<p>4/10/2024: Dry weather flow observed by I&P staff. Chlorine approx. 0.35 mg/L. Detergents & ammonia = 0.0 mg/L.</p> <p>4/24/2024: Site visit by I&P staff and MDE Compliance Specialist. Dry weather discharge observed, chlorine level = 2.2 mg/L. MDE will look into any existing permit status.</p> <p>5/31/2024: Update from I&P. MDE yet to finalize findings of their investigation. No response received from hospital re: cooling tower discharge permit. Dry flow observed at same location, tested above action limit for chlorine (1.4 mg/L). Correction notice has been issued to request elimination of discharge or provide documentation of authorized discharge. Re-inspection to occur on 7/1/24.</p> <p>6/6/2024: Building engineers responded to I&P that they have adjusted the cooling tower float levels to prevent intermittent discharge. Requested meeting with I&P to further discuss issue.</p> <p>6/13/2024: I&P sampled outfall, results showed 0.0 mg/L Cl.</p> <p>6/20/2024: I&P sampled outfall, results showed 0.0 mg/L Cl.</p>	

ILLICIT DISCHARGES

Survey Date	I&P Compliance Database ID	Outfall/Site Address	Issue	Response	Status
	E-2023-655 (cont.)			<p>6/24/2024: MDE informed I&P that cooling tower discharge must be routed to sanitary sewer or requires permit.</p> <p>6/30/2024: Due to previous repairs made to cooling towers and two consecutive 0.0 mg/L Cl test results, I&P will be closing the case. I&P will also forward this information to MDE. I&P will let hospital know they are in compliance at this time, but that any maintenance activity taking place that will require cooling towers to be drained will require a method of de-chlorination or will need to be regulated by a discharge permit authorized by MDE.</p> <p>CASE CLOSED</p>	

ILLCIT DISCHARGES

Survey Date	I&P Compliance Database ID	Outfall/Site Address	Issue	Response	Status
12/15/2023		<p align="center">Outfall B11G7O00012</p> <p>3380 Fort Meade Rd, Laurel, MD 2072</p>	<p>On December 15th, 2023, while performing a follow up inspection for previous years' potential illicit discharge areas, KCI Technologies, Inc. discovered flowing water from outfall B11G7O00012. After testing the sample, KCI found ammonia to exceed the allowed limit at 3.6 mg/L. A small amount of detergent (0.1mg/L) was detected under the screening threshold. No odor could be detected from the sample, but a grey sheen was seen on the surface of the pooling water around the outfall.</p> <p>A reinspection was performed later that day. The second test resulted in the same values as before, with ammonia at 3.6mg/L and a small amount of detergent at 0.1mg/L. The grey sheen seen on the pooling water previously had moved further downstream and a musty odor could now be detected from the sample. A flow was traced to an upstream inlet where water pooled and slowly released the illicit discharge. Public dumping of appliances and unlabeled chemicals were found around the side of one building, but a specific source of a spill or water source was unable to be located. Based on past findings at the outfall by the County, it is possible there is an illicit connection in the stormdrain system that may be tied to the Travelodge laundry activities however the specific source is still inconclusive.</p>	<p>12/15/2023: KCI reported illicit discharge to environmental hotline. 12/15/2023: Report received from KCI 12/19/2023: Report forwarded to I&P 03/27/2024: Investigated by BWPR Staff. No flow observed at outfall. Potential good housekeeping issues observed on Travelodge property. Reported illicit discharges suspected to be intermittent emptying of washwater into stormdrain by Travelodge, but cannot confirm. Will revisit outfall as part of FY25 IDDE screening.</p> <p>CASE CLOSED</p>	<p align="center">INCONCLUSIVE</p> <p align="center">REVISIT in FY25</p>

ILLICIT DISCHARGES

Survey Date	I&P Compliance Database ID	Outfall/Site Address	Issue	Response	Status
2/9/2024	E-2024-102	<p align="center">Outfall O04A8O00001</p> <p align="center">6704 Curtis Ct Glen Burnie, MD 21060</p>	<p>On February 9, 2024, while performing illicit discharge inspections for Anne Arundel County, KCI Technologies, Inc. discovered flowing water and a broken upstream manhole lid at Outfall O04A8O00001 located near Vision Technologies at 6704 Curtis Ct, Glen Burnie, MD. After testing the sample, KCI found Ammonia exceeded the screening threshold with a value of >3.0mg/L. All other parameters were normal, and no off color or odor were observed. There was iron flocculent present in the outfall barrel.</p> <p>Staff returned to this outfall after four hours to perform a re-test. Upon this visit, ammonia was still above 3.0mg/L. All other parameters were normal. Iron flocculent was still present in the outfall barrel, and staff had noted the tide had come in closer to the outfall barrel. Staff proceeded up the storm drain network to investigate the source of the ammonia. The first upstream manhole of the outfall had a trickle flow from the direction of the SWM pond by DC Scientific, Inc. The first upstream manhole lid was cracked in half and a portion of the lid had fallen into the manhole structure. A safety cone was located at this manhole opening. The flow in the manhole was too small to collect a sample, and the water in the SWM pond was very low. Standing water was observed in the inlets upstream of the SWM pond. The ammonia concentrations at this outfall may be attributed to the presence of iron flocculent bacteria in the groundwater, which can interfere with ammonia field tests. No surface flow, illicit discharges, or illicit connections were observed in the field in the drainage area of this is outfall.</p>	<p>2/16/2024: Report received from KCI 2/16/2024: Report forwarded to SIP (for manhole cover repair) 3/12/2024: Report forwarded to I&P for investigation 3/13/2024: Investigated by I&P. Trickle of dry weather flow observed at outfall. Test indicated below action threshold for ammonia. No odor or color observed. Flow traced upstream to infiltration trench. 3/14/2024: Follow up investigation by I&P. Trickle of dry weather flow observed again, but tests indicate ammonia below action threshold. Flow again traced upstream to inlet which drains infiltration trench. No illicit discharge found. Initial ammonia concentrations attributed to interference of iron floc with field test kit.</p> <p>CASE CLOSED</p>	<p align="center">RESOLVED</p>

ILLICIT DISCHARGES

Survey Date	I&P Compliance Database ID	Outfall/Site Address	Issue	Response	Status
2/9/2024		<p align="center">Outfall N05G3O00001</p> <p>6730 Baymeadow Drive Glen Burnie, MD 21060</p>	<p>On February 9, 2024, while performing illicit discharge inspections for Anne Arundel County, KCI Technologies, Inc. discovered elevated ammonia at Outfall N05G3O00001 located near Monarch Academy Glen Burnie at 6730 Baymeadow Dr, Glen Burnie, MD 21060. The outfall was stagnant, so staff proceeded upstream to sample at a flowing location. A pipe draining a portion of the Northern Recycling Center was found to be trickling, and a sample was taken at this location for IDDE testing. Ammonia exceeded the screening threshold with a value of >3.0mg/L. Chlorine (0.3mg/L) and detergents (0.05mg/L) were detected but not above screening thresholds. All other parameters were normal, and no off color or odor were observed. There was algae present in the pipe inserted into the outfall barrel.</p> <p>Staff returned to this outfall after four hours to perform a re-test. Upon this visit, ammonia was still >3.0mg/L. Chlorine (0.1mg/L) and detergents (0.05mg/L) were still present, but at low levels. All other parameters were normal. Algae was still present in the pipe inserted into the outfall barrel. Staff entered the Northern Recycling Center property to investigate a source of the ammonia. The Center has piles of mulch in the area that drains to the sample location. There is a swale along the access road that drains to the pipe that was sampled; this swale contained standing water and algae. The ammonia concentrations at this outfall may be attributed to groundwater or from the organic recycling/mulch operations upstream. No surface runoff was observed at the time of inspection from the Northern Recycling Center operations area.</p>	<p>2/16/2024: Report received from KCI 3/20/2024: Report forwarded to Bureau of Waste Management Environmental Monitoring Manager for investigation. 4/16/2024: Follow-up monitoring by WMS showed ammonia levels of 13.7 ppm in standing water in a swale directly downgradient of the organics recycling piles. All other areas were dry. 5/17/2024: Monitoring by WMS showed ammonia levels of 6.1 ppm and 2.0 ppm at two swales upstream of outfalls sampled by KCI. All other areas sampled were either dry or below action threshold for ammonia. WMS confirmed that no vehicle or recycling cart washing is conducted upstream of the outfalls. WMS concluded that the likely ammonia source is the natural wood waste debris pile waiting to be processed into mulch or the mulch pile waiting to be transported off site. These piles are located adjacent to the stormwater ditches that lead to the outfalls in question.</p>	<p align="center">RESOLVED</p>

				<p>Piles were likely accumulated between Nov 2023 and Feb 2024, and anaerobic conditions may have developed. Another possible source may anaerobic decomposition of plant material and wildlife manure in the storm swales draining to the outfalls. WMS will work to ensure organic waste is processed and transported off site in a timely manner to minimize impacts to stormwater.</p>	
--	--	--	--	--	--

EROSION AND STRUCTURAL ISSUES					
Survey Date	I&P Compliance Database ID	Outfall/Site Address	Issue	Response	Status
11/15/2023		Outfall M11A3O00001 8378 Veterans Hwy, Millersville, MD 21108	On November 15, 2023, while performing illicit discharge inspections for Anne Arundel County, KCI Technologies, Inc. discovered Outfall M11A3O00001 which is eroded, and several sections of the projecting pipe have collapsed. Two sections of pipe have fully detached from the outfall, and the adjacent culvert (M11A3O00011) appears unstable as well, as it is being held up by two wooden slats. The banks downstream of these outfalls are also eroding.	11/16/2023: Report received from KCI 11/16/2023: Report forwarded to SIP 11/16/2023: Inspected by SIP. On list for site visit with contractor to obtain cost estimate. 12/8/2023: Cost estimate received from contractor.	UNRESOLVED
11/16/2023		Outfall M08C8O00011 305 Hospital Dr, Glen Burnie, MD 21061	On November 16, 2023, while performing illicit discharge inspections for Anne Arundel County, KCI Technologies, Inc. discovered Outfall M08C8O00011 had major erosion surrounding the outfall. The outfall pipe is fully exposed, and a concrete slab is laying against the top of the pipe. The pipe's bituminous coating is degrading, and the barrel is corroded at some parts. The banks downstream of the outfall are also eroding.	11/27/2023: Report received from KCI 11/29/2023: Report forwarded to SIP 11/29/2023: SIP indicates that this is private infrastructure. 4/4/2024: Forwarded to I&P.	UNRESOLVED
12/1/2023		Outfall N04E7O00008 575 E Ordnance Rd, Glen Burnie, MD 21060	On December 1, 2023, while performing illicit discharge inspections for Anne Arundel County, KCI Technologies, Inc. discovered Outfall N04E7O00008 which is eroded at the first section of pipe. The first pipe joint is disconnected causing undermining and erosion to occur adjacent to the pipe.	12/15/2023: Report received from KCI 12/21/2023: Report forwarded to SIP 12/21/2023: Structure confirmed as privately owned. Issue referred to I&P.	UNRESOLVED
2/8/2024		Outfall M05B5O00001 1405 Rowe Drive, Glen Burnie, MD 21061	On February 8, 2024, while performing illicit discharge inspections for Anne Arundel County, KCI Technologies, Inc. discovered the end section is fully detached at Outfall M05B5O00001. The corrugated metal pipe is also corroded. The outfall had a steady, continuous flow, but no illicit discharge was detected.	2/16/2024: Report received from KCI 2/16/2024: Report forwarded to SIP 3/7/2024: Cost estimate received from contractor 8/6/2024: Project designated as low priority. SIP researching ROW/easement status.	UNRESOLVED
2/8/2024		Outfall N07C7O00001 116 N Jerome Pkwy Glen Burnie, MD 21060	On February 8, 2024, while performing illicit discharge inspections for Anne Arundel County, KCI Technologies, Inc. discovered concrete being undermined at Outfall N07C7O00001. The soil and rip rap underneath the first upstream structure was eroded away and undermining the concrete.	2/16/2024: Report received from KCI 2/16/2024: Report forwarded to SIP 2/23/2024: Investigated by SIP. Action pending.	UNRESOLVED

EROSION AND STRUCTURAL ISSUES

Survey Date	I&P Compliance Database ID	Outfall/Site Address	Issue	Response	Status
2/8/2024		Outfall N07G8O00030 7726 Baltimore Annapolis Blvd, Glen Burnie, MD 21060	On February 8, 2024, while performing illicit discharge inspections for Anne Arundel County, KCI Technologies, Inc. discovered a structural issue with the first upstream structure to Outfall N07G8O00030. The metal casting for the manhole was unbolted and off-center, exposing the manhole opening.	2/16/2024: Report received from KCI 2/16/2024: Report forwarded to SIP. Action pending.	UNRESOLVED

UPLAND POLLUTION					
Survey Date	I&P Compliance Database ID	Outfall/Site Address	Issue	Response	Status
11/6/2023		33 Magothy Beach Road #100, Pasadena, MD 21122.	On November 6, 2023, while performing commercial industrial inspections for Anne Arundel County, KCI Technologies, Inc. discovered kitchen grease on top of the grease bin and on the pavement. The grease is assumed to be coming from Mutiny Scratch Bar & Fresh Bar which is located in the nearest building to this grease bin. The pavement staining extends past the trash dumpsters next to the grease bin.	<p>11/9/2023: Report received from KCI 11/14/2023: Report forwarded to HD 11/28/2023: Inspected by HD. Remnant grease and improperly disposed of rubbish/garbage observed. Notice of Violation issued. 1/22/2024: Follow up inspections show that the violation has been resolved; grease barrel has been removed and dumpster area cleaned up.</p> <p>CASE CLOSED</p>	RESOLVED
11/7/2023	E-2023-637	3101 Mountain Rd, Pasadena, MD 21122	On November 7, 2023, while performing commercial industrial inspections for Anne Arundel County, KCI Technologies, Inc. discovered employees actively washing many cars with soap on the open lot at Pasadena Pre-owned. Soap filled water was running off the lot into Margaret Ave and MD 177.	<p>11/7/2023: Report received from KCI 11/7/2023: Report forwarded to I&P 11/16/2024: Inspector conducted on-site inspection on and met with on-site manager. Lot will amend practices to use floor drains when detailing vehicles to prevent wash water from reaching the curb and gutter and flowing into stormdrains.</p> <p>CASE CLOSED</p>	RESOLVED
11/7/2023		8095A Edwin Raynor Blvd Pasadena, MD 21122	On November 7, 2023, while performing commercial industrial inspections for Anne Arundel County, KCI Technologies, Inc. discovered employees of Green Valley Marketplace using a hose to wash down the building's grease bin. Rainbow sheen was observed in the wash water, which was running downslope into a stormwater in let. Upon a revisit to take further photos after the business's employees had ceased washing, KCI staff observed another employee washing off the dumpsters in the area. No controls were in place to deter either discharge from entering the storm drain.	<p>11/7/2023: Report received from KCI 11/7/2023: Report forwarded to I&P 11/16/2023: Report forwarded to HD. 11/17/2023: Investigated by HD. Violation observed. Reinspection scheduled for 12/18 to ensure that violation has been corrected. 12/14/2023: Reinspected by HD. All violations have been corrected.</p> <p>CASE CLOSED</p>	RESOLVED

UPLAND POLLUTION					
Survey Date	I&P Compliance Database ID	Outfall/Site Address	Issue	Response	Status
11/7/2023		8098 Edwin Raynor Blvd Pasadena, MD 21122	On November 7, 2023, while performing commercial industrial inspections for Anne Arundel County, KCI Technologies, Inc. discovered heavy pavement staining located in the dumpster containment area and evidence of the staining extending into the parking lot at Wendy's. The source of the staining is unknown but may be related to dumpster juices or employees spraying the dumpsters down (a hose was observed in the containment area).	11/9/2023: Report received from KCI 11/14/2023: Report forwarded to HD 11/16/2023: Inspection by HD shows Grease barrel Violations. Re Inspection required. 12/6/2023: Reinspection by HD shows that grease barrel violations were corrected. CASE CLOSED	RESOLVED
11/7/2023		350 Mountain Road (Mountain Market Place) Pasadena, MD 21122.	On November 7, 2023, while performing commercial industrial inspections for Anne Arundel County, KCI Technologies, Inc. discovered heavy kitchen grease pavement staining behind the Food Lion building. In addition, trash was noted at two curb cut openings that drain the parking lot areas behind the Food Lion and Mountain Market Place building.	11/9/2023: Report received from KCI 11/14/2023: Report forwarded to HD 11/17/2023: Inspection by HD shows Grease barrel Violations. Reinspection required. 12/21/2023: Reinspection by HD shows that violations NOT corrected. A 2nd re-inspection required (A \$175.00 reinspection fee will occur). 1/18/24 is the Re Inspection date. 1/18/2024: 2 nd reinspection by HD. All violations corrected. CASE CLOSED	RESOLVED
11/8/2023		8026 Ritchie Hwy Suite B Pasadena, MD 21122	On November 8, 2023, while performing commercial industrial inspections for Anne Arundel County, KCI Technologies, Inc. discovered heavy pavement staining and fluids on the parking lot that appeared to have suds near a stormdrain inlet. The fluids appear to be coming from the enclosed dumpster area located behind Oscar's Alehouse East building in the parking lot.	11/9/2023: Report received from KCI 11/14/2023: Report forwarded to HD 11/16/2023: Inspection by HD shows Grease barrel Violations. Reinspection required. 12/21/2023: Inspection by HD shows that grease barrel violations were corrected. CASE CLOSED	RESOLVED

UPLAND POLLUTION					
Survey Date	I&P Compliance Database ID	Outfall/Site Address	Issue	Response	Status
11/9/2023		8541 Veterans Hwy, Millersville, MD 21108	On November 9, 2023, while performing commercial industrial inspections for Anne Arundel County, KCI Technologies, Inc. discovered a kitchen grease spill located in the dumpster containment in the parking lot at Libations. There is a large spill next to the grease bin, and an additional smaller spill on the pavement in front of the waste collection area. The fence of the dumpster containment is stained black, indicating previous and ongoing issues with grease housekeeping.	<p>11/13/2023: Report received from KCI 11/29/2023: Report forwarded to HD 12/1/2023: Inspection by HD shows grease barrel violation. Re Inspection required. 12/21/2023: Inspection by HD shows violations were corrected.</p> <p>CASE CLOSED</p>	RESOLVED
11/16/2023		7951 Nolpark Ct Glen Burnie, MD 21061	On November 16, 2023, while performing commercial industrial inspections for Anne Arundel County, KCI Technologies, Inc. discovered evidence of public dumping at a donation bin near Target. Large pieces of furniture, mattresses, and trash bags with clothes and garbage were left around the donation bins.	<p>11/27/2023: Report received from KCI 11/29/2023: Report forwarded to HD 11/29/2023: Report forwarded to Bureau of Highways (for debris removal) and I&P (for violations). 12/13/2023: Investigated by I&P. Confirmed that site had been cleaned up. Donation boxes (believed to be fakes) still present on County road. 12/14/2023: Removal of boxes to be handled by Bureau of Highways (service request # SR-112923-27)</p> <p>CASE CLOSED</p>	RESOLVED

UPLAND POLLUTION					
Survey Date	I&P Compliance Database ID	Outfall/Site Address	Issue	Response	Status
11/30/2023	E-2023-667	7514 Ritchie Hwy, Glen Burnie, MD 21061	On November 30, 2023, while performing commercial industrial inspections for Anne Arundel County, KCI Technologies, Inc. discovered construction materials including stockpiles of dirt sitting in the LA Fontaine Bleue parking lot. No cover or erosion and sediment controls were observed in the parking lot to prevent material movement during rain events.	<p>12/15/2023: Report received from KCI 12/19/2023: Report forwarded to I&P. 12/20/2023: Investigated by I&P. Inspector met with property owner and explained that any exposed soil stockpiles need to be covered with impermeable sheeting before the next rain event and also maintained until construction is complete. Issued a correction notice with a follow up date of 12/27/23. 12/27/2023: Follow-up inspection by I&P. All dirt stockpiles have been cleaned up and are no longer on the pavement next to construction area.</p> <p>CASE CLOSED</p>	RESOLVED
12/7/2023		8971 Fort Smallwood Rd, Pasadena, MD 21122	On December 7, 2023, while performing commercial industrial inspections for Anne Arundel County, KCI Technologies, Inc. discovered a grease bin with heavy staining on the pavement and had recently been hosed down behind El Cabrito Mexican Grill.	<p>12/15/2023: Report received from KCI 12/21/2023: Report forwarded to HD. 12/24/2023: Investigated by HD. Violations observed. Reinspection needed. 1/3/2024: Reinspection by HD. Violations have been corrected.</p> <p>CASE CLOSED</p>	RESOLVED
12/21/2023		8111 Fort Smallwood Rd, Curtis Bay, MD 21226	On December 21st, 2023, while performing commercial industrial inspections for Anne Arundel County, KCI Technologies, Inc. discovered heavy pavement staining. The staining appears to be coming from the open grease bin located behind the building from Pizza Crown.	<p>12/21/2023: Report received from KCI 1/3/2024: Report forwarded to HD. 1/10/2024: Investigated by HD. No violations observed.</p> <p>CASE CLOSED</p>	RESOLVED

UPLAND POLLUTION					
Survey Date	I&P Compliance Database ID	Outfall/Site Address	Issue	Response	Status
12/21/2023	E-2024-007	7490 Ashmore Ave, Glen Burnie, MD 21060	On December 21, 2023, while performing commercial industrial inspections for Anne Arundel County, KCI Technologies, Inc. discovered an uncovered salt pile at the Tanyard Cove Community Clubhouse parking lot.	12/21/2023: Report received from KCI 1/3/2024: Report forwarded to I&P. 1/3/2024: Investigated by I&P. Inspector found that salt pile had already been cleaned up and stored in container. CASE CLOSED	RESOLVED
2/8/2024		720 Church Street Brooklyn, MD 21225	On February 8, 2024, while performing commercial industrial inspections for Anne Arundel County, KCI Technologies, Inc. discovered evidence of trash and building materials along the back of the Village Liquors store. Large quantities of metal and wooden trash were found in a pile behind the store, as well as filled trash bags.	2/16/2024: Report received from KCI 2/20/2024: Report forwarded to HD. 2/23/2024: Investigated by HD. Inspector observed excessive trash and debris on property. Notice of Violation issued to property owner. 5/8/2024: Property owner has failed to correct violations before Notice of Violation deadline. Civil citation has been issued. 6/13/2024: Violations have been corrected. Citation has been nol-prossed. CASE CLOSED	RESOLVED
2/8/2024		5107 Ritchie Hwy Brooklyn Park, MD 21225	On February 8, 2024, while performing commercial industrial inspections for Anne Arundel County, KCI Technologies, Inc. discovered evidence of public dumping along the fence line of the parking lot of Dollar General. Large quantities of smaller pieces of trash were along the entire fence line, as well as some larger pieces of wooden trash.	2/16/2024: Report received from KCI 2/20/2024: Report forwarded to HD. 2/23/2024: Investigated by HD. Inspector observed excessive trash and debris on property. Notice of Violation issued to property owner. 5/8/2024: Property owner has failed to correct violations before Notice of Violation deadline. Civil citation has been issued. 6/13/2024: Violations have been corrected. Citation has been nol-prossed. CASE CLOSED	RESOLVED

UPLAND POLLUTION					
Survey Date	I&P Compliance Database ID	Outfall/Site Address	Issue	Response	Status
2/8/2024		105 Chesapeake Center Ct, Glen Burnie, MD 21060	On February 8, 2024, while performing commercial industrial inspections for Anne Arundel County, KCI Technologies, Inc. discovered grease stains around two grease bins located behind Sidelines Sports Bar & Grill. A large area of the sidewalk and pavement between the two bins was stained. In addition, the top of one of the bins had solidified grease.	<p>2/16/2024: Report received from KCI 2/20/2024: Report forwarded to HD. 2/27/2024: Investigated by HD. Found violations around the grease disposal receptacle. A re inspection will occur after 3/7/24 to ensure violations were corrected. 3/12/2024: Re-inspection by HD. Violations have been corrected.</p> <p>CASE CLOSED</p>	RESOLVED
2/8/2024		5507 Ritchie Hwy Ste. D, Brooklyn Park, MD 21225	On February 8, 2024, while performing commercial industrial inspections for Anne Arundel County, KCI Technologies, Inc. discovered evidence of an overflowing dumpster behind Domino's Pizza. Miscellaneous pieces of trash were surrounding the dumpster, and trash was overflowing from the open top.	<p>2/16/2024: Report received from KCI 2/20/2024: Report forwarded to HD. 2/23/2024: Investigated by HD. Found violations around the dumpster. A re inspection will occur after 3/4/24 to ensure violations were corrected. 3/4/2024: Re-inspection by HD. Violations have been corrected.</p> <p>CASE CLOSED</p>	RESOLVED
2/8/2024		100 Holsum Way Glen Burnie, MD 21060	On February 8, 2023, while performing commercial industrial inspections for Anne Arundel County, KCI Technologies, Inc. discovered an employee actively pre-washing cars before entering a car wash. Buckets of pink liquid, possibly soap, and hoses were lined up outside of the washing bays. The perimeter of the facility was inspected, and all surrounding inlets appeared to be dry. There were structures on the side of the grass that could possibly be a sewer/water system. It is believed that the soapy water from the car washes could possibly be draining into a water treatment system and not storm drains.	<p>2/16/2024: Report received from KCI 2/20/2024: Report forwarded to I&P. 2/22/2024: Investigated by I&P. No violations were observed</p> <p>CASE CLOSED</p>	REVISIT in FY25

UPLAND POLLUTION

Survey Date	I&P Compliance Database ID	Outfall/Site Address	Issue	Response	Status
11/30/2024		7497 Baltimore-Annapolis Blvd, Glen Burnie, MD 21061	On November 30, 2023, while performing commercial industrial inspections for Anne Arundel County, KCI Technologies, Inc. discovered potable water line leaks around the businesses at Delaware Avenue and Baltimore-Annapolis Boulevard. Water was being pumped from a fire hydrant and water line meters as an above-ground temporary water system. There were several connection areas leaking and spilling water onto the street and into storm drain inlets. Ice melt pellets were being used to prevent the pooling water from freezing on the roads. Field crew reported situation to County's Water/Sewer Emergency Hotline.	<p>11/30/2024: Report received from KCI</p> <p>11/30/2024: Report forwarded to Utilities.</p> <p>12/1/2024: BWPR informed that Utilities is aware of the issue and a contractor is handling repairs.</p> <p>CASE CLOSED</p>	RESOLVED
2/8/2024		6650 Governor Ritchie Hwy, Glen Burnie, MD 21061.	On February 8, 2024, while performing commercial industrial inspections for Anne Arundel County, KCI Technologies, Inc. discovered an uncovered salt stockpile on the side of the Lowe's building. No controls were observed to prevent material movement during rain events.	<p>2/16/2024: Report received from KCI</p> <p>2/20/2024: Report forwarded to I&P.</p> <p>2/22/2024: Investigated by I&P. Salt pile had been removed</p> <p>CASE CLOSED</p>	RESOLVED

Table 5.2. Ongoing investigative actions from previous reporting years.

EROSION AND STRUCTURAL ISSUES					
Survey Date	I&P Compliance Database ID	Outfall/Site Address	Issue	Response	Status
March 16, 2023		Outfall C11O029 3525 Sharonwood Rd, Laurel, MD 20724	On March 16th, 2023, while performing illicit discharge inspections for Anne Arundel County, KCI Technologies, Inc. discovered severe bank erosion and head cutting downstream of outfall C11O029. This erosion began at a head cut about 10 yards downstream of the outfall, and was about 5ft deep on average.	<p>4-17-2023: Report received by BWPR 4-17-2023: Report forwarded to SIP. 7-19-2023: SIP to investigate in coming weeks to determine if outfall stabilization is necessary. 8-11-2023: Inspected by SIP. Outfall stabilization work expected to be completed in 2024. 3-28-2024: Estimate received from contractor. Work to begin in 2024.</p> <p>CASE OPEN</p>	UNRESOLVED
March 15, 2023		Outfall R20O005 11 Hudson St, Annapolis, MD 21401	On March 15th, 2023, while performing illicit discharge inspections for Anne Arundel County, KCI Technologies, Inc. discovered damage in the barrel and erosion at upstream structures of Outfall R20O005. There are several cracks in the high-density polyethylene pipe and the pipe has begun separating. In addition, the soil around the next upstream manhole is scouring.	<p>4-17-2023: Report received by BWPR 4-17-2023: Report forwarded to SIP. 7-19-2023: SIP has scheduled this for video inspection. SIP will repair the pipe and stabilize the outfall. Completion of work expected by Spring 2024. Work TBD. 8-11-2023: SIP will need to raise manhole(s) to complete video inspection; pipe likely to require lining. 4-9-2023: Manhole raised, video inspection completed. 9-13-2024: Cost estimate received for pipe lining. Work pending.</p> <p>CASE OPEN</p>	UNRESOLVED

UPLAND POLLUTION

Survey Date	I&P Compliance Database ID	Outfall/Site Address	Issue	Response	Status
February 22, 2023	E-2023-110	7706 Race Road, Jessup, MD 20794	On February 22, 2023, while performing commercial industrial inspections for Anne Arundel County, KCI Technologies, Inc. discovered employees working on vehicles/trucks outside and burning something in barrels in the back of Gerber Collision and Glass located at 7706 Race Road, Jessup.	<p>3-2-2023: Report received by BWPR</p> <p>3-15-2023: Report forwarded to I&P.</p> <p>3-25-2023: Investigated by I&P. Investigator discovered that the report is actually for the business located next to Gerber collision and glass. There was no one actively burning anything in barrels on site but there was ash in multiple barrels. The workers were outside performing maintenance on trucks. Inspector was told that they have a SWPP.</p> <p>3-17-2023: Follow up by I&P. No violations observed. Inspector forwarded complaint to Zoning Enforcement and MDE for further investigation.</p> <p>4-11-2023: Investigated by Zoning Enforcement. No burning was observed, however, several damaged/inoperable vehicles were observed. Property owners were told to remove vehicles from property. Property owners have also applied for a Certificate of Use and were required to screen off business as to not be visible from road. Site will remain under observation by Zoning Enforcement</p> <p>7-26-2023: Still being monitored by Zoning Enforcement.</p> <p>CASE OPEN</p>	RESOLVED

UPLAND POLLUTION					
Survey Date	I&P Compliance Database ID	Outfall/Site Address	Issue	Response	Status
February 23, 2023	n/a	1682 Annapolis Road, Odenton, MD 21113	On March 8, 2023, while performing commercial industrial inspections for Anne Arundel County, KCI Technologies, Inc. discovered a broken down van and significant amount of trash behind New Star Inn located at 1682 Annapolis Road, Odenton.	<p>3-10-2023: Report received by BWPR</p> <p>3-13-2023: Report forwarded to HD.</p> <p>6-26-2023: Investigated by HD. Property found to be vacant. Accumulations of rubbish observed on the property. Notice to Abate Nuisance issued. Rubbish was cleaned up by the property owner upon reinspection.</p> <p>CASE CLOSED</p>	RESOLVED
March 7, 2023	E-2023-103	8529 Brock Bridge Road, Laurel, MD 20724	On March 7, 2023, while performing commercial industrial inspections for Anne Arundel County, KCI Technologies, Inc. discovered an uncontained millings stockpile and pile of used oil filters on the side of the road outside 8529 Brock Bridge Road, Laurel.	<p>3-8-2023: Report received by BWPR</p> <p>3-13-2023: Report forwarded to I&P.</p> <p>3-15-2023: Investigated by I&P. Millings and oil filters are on the side of the road in front of a business with the gate locked. Not sure which business is the actual source.</p> <p>8-28-2023: I&P to continue monitoring.</p> <p>1-30-2024: Investigation inconclusive. Will re-screen property in FY2025.</p> <p>CASE CLOSED</p>	INCONCLUSIVE REVISIT in FY2025

March 10, 2023		745 MD-3 N Gambrills, MD 21054	On March 10, 2023, while performing commercial industrial inspections for Anne Arundel County, KCI Technologies, Inc. observed chemical drums not properly stored under cover and staining on the pavement behind Honda PowerSports located at 745 MD-3 N, Gambrills.	<p>3-14-2023: Report received by BWPR 9-11-2023: Referred to MDE Inspection and Compliance. Case #181492. 1-30-2024: Investigation inconclusive. Will re-screen property in FY2025. 7-17-2024: No 20-SW permit req'd per MDE. Investigation referred back to County I&P.</p> <p>CASE OPEN</p>	<p>INCONCLUSIVE REVISIT in FY2025</p>
March 10, 2023		784 MD-3 N Gambrills, MD 21054	On March 10, 2023, while performing commercial industrial inspections for Anne Arundel County, KCI Technologies, Inc. observed chemical drums not properly stored under cover and staining on the pavement outside Edelen's Auto Repair located at 784 MD-3 N, Gambrills.	<p>3-14-2023: Report received by BWPR 9-11-2023: Referred to MDE Inspection and Compliance. Case #181492. 1-30-2024: Investigation inconclusive. Will re-screen property in FY2025. 7-17-2024: No 20-SW permit req'd per MDE. Investigation referred back to County I&P.</p> <p>CASE OPEN</p>	<p>INCONCLUSIVE REVISIT in FY2025</p>
March 10, 2023		1371 St Stephens Church Rd Crownsville, MD 21032	On March 10, 2023, while performing commercial industrial inspections for Anne Arundel County, KCI Technologies, Inc. observed chemical drums not properly stored under cover and staining on the ground at Ballard Enterprises located at 1371 St. Stephens Church Road, Crownsville.	<p>3-14-2023: Report received by BWPR 9-11-2023: Referred to MDE Inspection and Compliance. Case #181492. 1-30-2024: Investigation inconclusive. Will re-screen property in FY2025. 7-17-2024: No 20-SW permit req'd per MDE. Investigation referred back to County I&P.</p> <p>CASE OPEN</p>	<p>INCONCLUSIVE REVISIT in FY2025</p>

6.0 REFERENCES

Maryland Department of the Environment. 1997. Dry Weather Flow and Illicit Discharges in Maryland Storm Drain Systems.

KCI, Inc. 2023. Anne Arundel County Bureau of Watershed Protection and Restoration's Illicit Discharge Detection and Elimination Standard Operating Procedures (SOP) for Consultants and BWPR Staff. Prepared by KCI Technologies, Inc., Sparks, MD, for Anne Arundel County, MD, BWPR.

**APPENDIX A | ILLICIT DISCHARGE REPORTS SUBMITTED BY KCI TO ANNE
ARUNDEL COUNTY**

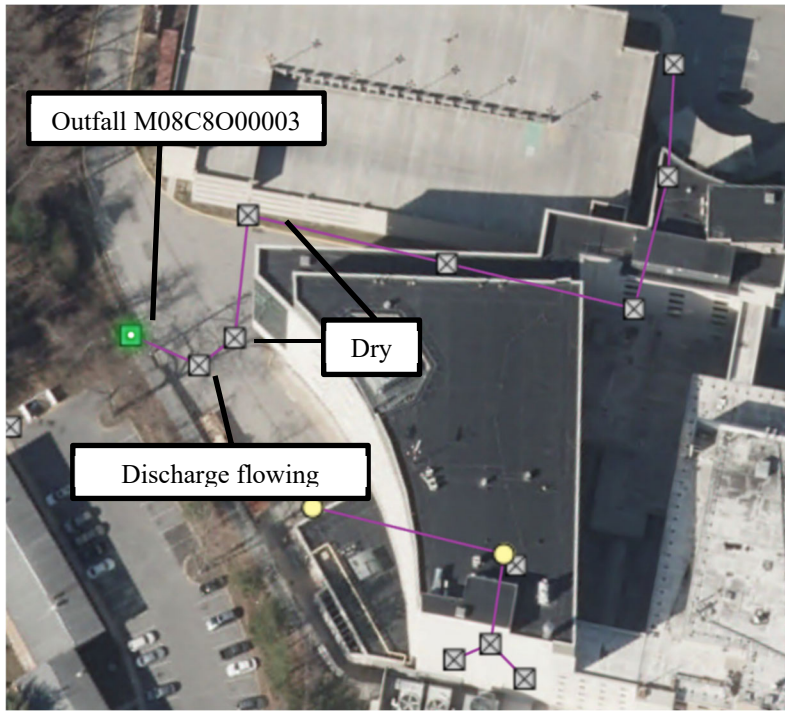
**Anne Arundel County IDDE Outfall Screening
Potential Illicit Discharge Report
Outfall M08C8O00003**

On November 16, 2023, while performing IDDE outfall inspections for Anne Arundel County, KCI Technologies, Inc. discovered a potential illicit discharge with high chlorine and fluoride levels discharging from Outfall M08C8O00003 across from the UM Baltimore Washington Medical Center at 301 Hospital Dr, Glen Burnie, MD 21061. There was steady flow out of the outfall. The discharge was clear with a soapy residue. An IDDE test was conducted. Chlorine (1.0 mg/L) and fluoride (2.00 mg/L) were found to be above the screening thresholds. A small amount of detergent (0.1mg/L) was detected along with a faint chlorine odor. Foam was noted at the outfall as well. The discharge was tracked to the first upstream manhole structure, which contained one discharging pipe. The flow appears to be originating from the pipe that goes under the medical building. All other upstream structures were dry.

A reinspection of this outfall was performed on November 17, 2023, in which two visits were made to this outfall. During both visits, the flow was a trickle and too small to collect a sample so a test couldn't be conducted. The outfall had visible foam at the rip rap again and the discharge was clear. The source of the discharge was originating from the same location as the first test.

A reinspection of this outfall was performed on November 20, 2023, in which two inspections were performed at 12:50 PM and 5:30 PM. During both inspections, chlorine (1.5mg/L and 0.65 mg/L) and fluoride (1.78mg/L and 0.96mg/L) levels were above the screening thresholds. Ammonia and detergents were elevated as well, though not above threshold. Both samples had a chlorinated odor. Foam was still present at the outfall, though the amount was lower than the November 16th visit. The source of the discharge was originating from the same location as the first test. The surrounding inlets and trench drains were inspected, and all were dry.

LOCATION: 301 Hospital Dr, Glen Burnie, MD 21061.



Outfall M08C8O00003 on 11/16/23.



Inside Outfall M08C8O00003 pipe on 11/16/23.



Inside manhole upstream from Outfall M08C8O00003 on 11/16/23.



Inside next upstream inlet from manhole on 11/16/23.



Overview of flow source area on 11/16/23.



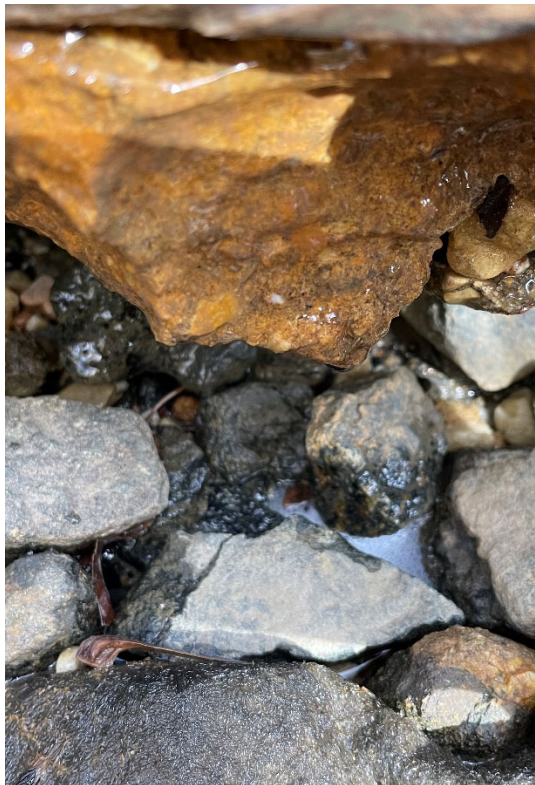
Outfall M08C8O00003 on 11/17/23 with foam at rip rap.



Inside Outfall M08C8O00003 pipe on 11/17/23.



Outfall M08C8O00003 on 11/20/23 (1st inspection).



Outfall M08C8O00003 on 11/20/23 (1st inspection) with foam at rip rap.



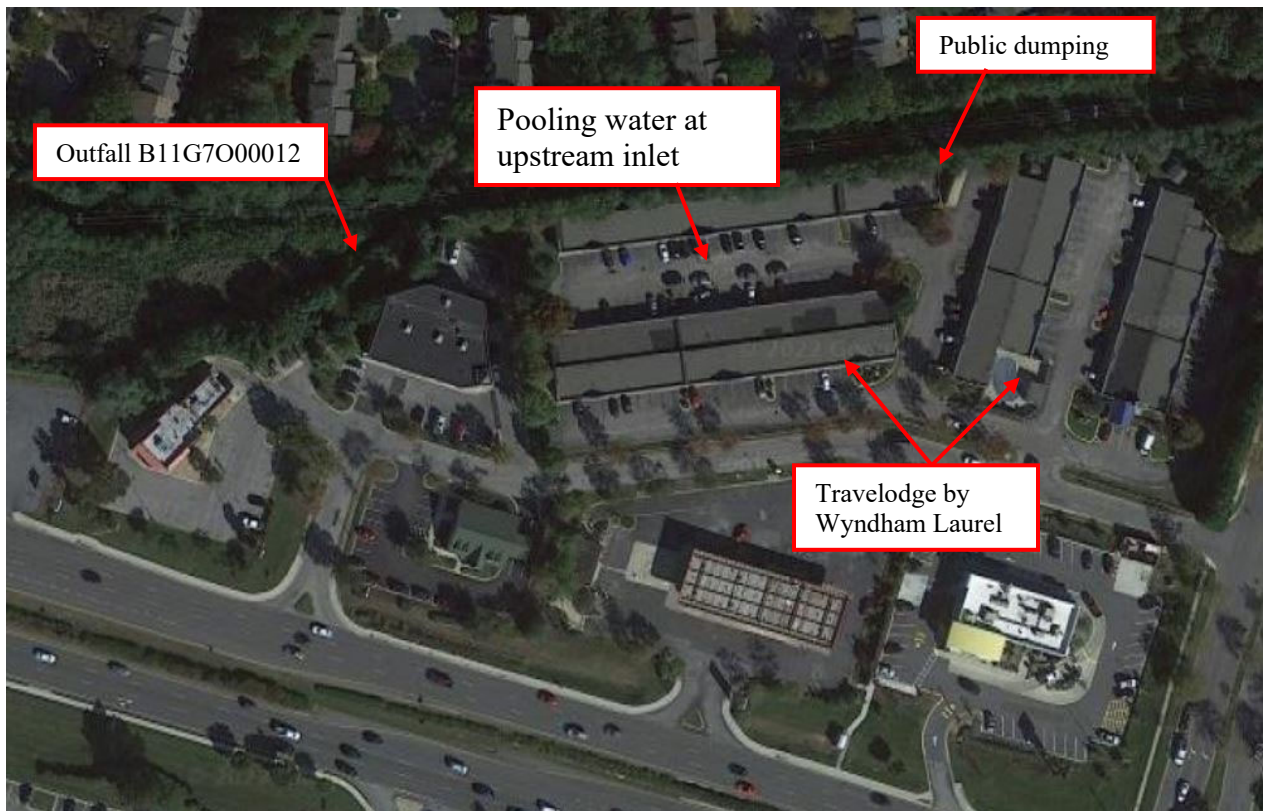
Outfall M08C8O00003 on 11/20/23 (2nd inspection).

**Anne Arundel County Systematic IDDE Outfall Screening
Potential Illicit Discharge Report
Travelodge by Wyndham Laurel**

On December 15th, 2023, while performing a follow up inspection for previous years' potential illicit discharge areas, KCI Technologies, Inc. discovered flowing water from outfall B11G7O00012. After testing the sample, KCI found ammonia to exceed the allowed limit at 3.6 mg/L. A small amount of detergent (0.1mg/L) was detected under the screening threshold. No odor could be detected from the sample, but a grey sheen was seen on the surface of the pooling water around the outfall.

A reinspection was performed later that day. The second test resulted in the same values as before, with ammonia at 3.6mg/L and a small amount of detergent at 0.1mg/L. The grey sheen seen on the pooling water previously had moved further downstream and a musty odor could now be detected from the sample. A flow was traced to an upstream inlet where water pooled and slowly released the illicit discharge. Public dumping of appliances and unlabeled chemicals were found around the side of one building, but a specific source of a spill or water source was unable to be located. Based on past findings at the outfall by the County, it is possible there is an illicit connection in the stormdrain system that may be tied to the Travelodge laundry activities however the specific source is still inconclusive.

LOCATION: 3380 Fort Meade Rd, Laurel, MD 20724





Outfall B11G7O00012 overview.



Outfall B11G7O00012 downstream.



Pooling water at upstream inlet.



Public dumping on side of building.



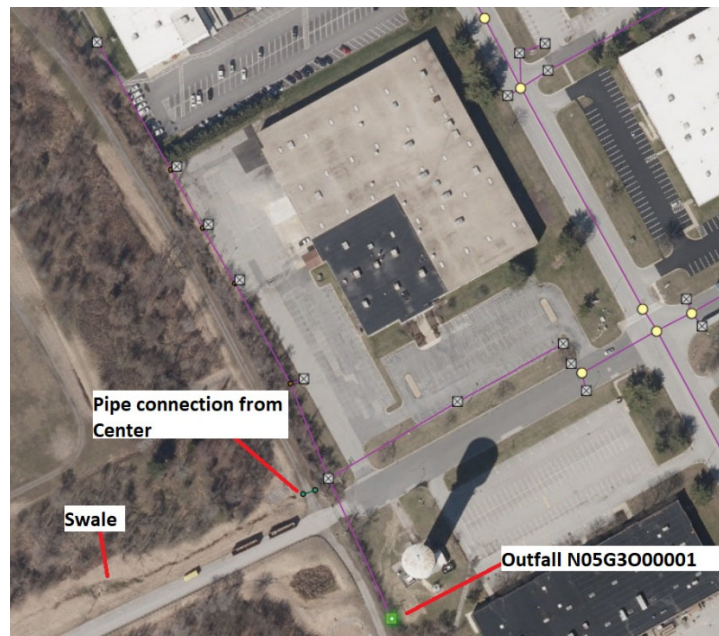
Public dumping on side of building.

**Anne Arundel County IDDE Outfall Screening
Potential Illicit Discharge Report
Outfall N05G3O00001**

On February 9, 2024, while performing illicit discharge inspections for Anne Arundel County, KCI Technologies, Inc. discovered elevated ammonia at Outfall N05G3O00001 located near Monarch Academy Glen Burnie at 6730 Baymeadow Dr, Glen Burnie, MD 21060. The outfall was stagnant, so staff proceeded upstream to sample at a flowing location. A pipe draining a portion of the Northern Recycling Center was found to be trickling, and a sample was taken at this location for IDDE testing. Ammonia exceeded the screening threshold with a value of >3.0mg/L. Chlorine (0.3mg/L) and detergents (0.05mg/L) were detected but not above screening thresholds. All other parameters were normal, and no off color or odor were observed. There was algae present in the pipe inserted into the outfall barrel.

Staff returned to this outfall after four hours to perform a re-test. Upon this visit, ammonia was still >3.0mg/L. Chlorine (0.1mg/L) and detergents (0.05mg/L) were still present, but at low levels. All other parameters were normal. Algae was still present in the pipe inserted into the outfall barrel. Staff entered the Northern Recycling Center property to investigate a source of the ammonia. The Center has piles of mulch in the area that drains to the sample location. There is a swale along the access road that drains to the pipe that was sampled; this swale contained standing water and algae. The ammonia concentrations at this outfall may be attributed to groundwater or from the organic recycling/mulch operations upstream. No surface runoff was observed at the time of inspection from the Northern Recycling Center operations area.

LOCATION: 6730 Baymeadow Dr, Glen Burnie, MD 21060.



Site Map



02/09/2024 Inspection – Overview of N05G3000001 sample point.



02/09/2024 Inspection –N05G3000001 sample point close-up.



02/09/2024 Inspection – Upstream side of N05G3000001 sample point.



02/09/2024 Inspection – Mulch at Northern Recycling Center.



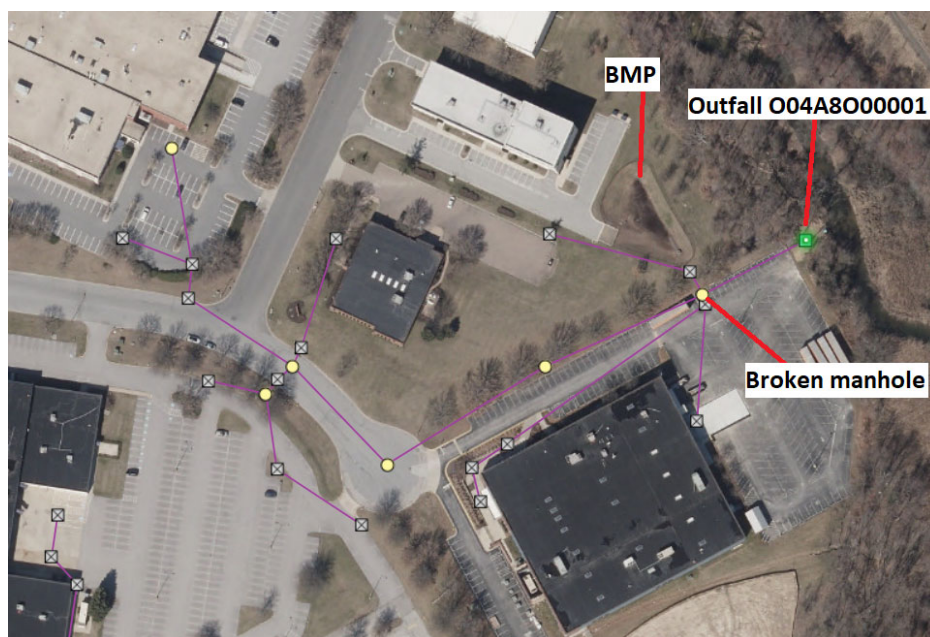
02/09/2024 Inspection – Swale at Northern Recycling Center.

**Anne Arundel County IDDE Outfall Screening
Potential Illicit Discharge Report
Outfall O04A8O00001**

On February 9, 2024, while performing illicit discharge inspections for Anne Arundel County, KCI Technologies, Inc. discovered flowing water and a broken upstream manhole lid at Outfall O04A8O00001 located near Vision Technologies at 6704 Curtis Ct, Glen Burnie, MD. After testing the sample, KCI found Ammonia exceeded the screening threshold with a value of >3.0mg/L. All other parameters were normal, and no off color or odor were observed. There was iron flocculent present in the outfall barrel.

Staff returned to this outfall after four hours to perform a re-test. Upon this visit, ammonia was still above 3.0mg/L. All other parameters were normal. Iron flocculent was still present in the outfall barrel, and staff had noted the tide had come in closer to the outfall barrel. Staff proceeded up the storm drain network to investigate the source of the ammonia. The first upstream manhole of the outfall had a trickle flow from the direction of the SWM pond by DC Scientific, Inc. The first upstream manhole lid was cracked in half and a portion of the lid had fell into the manhole structure. A safety cone was located at this manhole opening. The flow in the manhole was too small to collect a sample, and the water in the SWM pond was very low. Standing water was observed in the inlets upstream of the SWM pond. The ammonia concentrations at this outfall may be attributed to the presence of iron flocculent bacteria in the groundwater. No surface flow, illicit discharges, or illicit connections were observed in the field in the drainage area of this is outfall.

LOCATION: 6704 Curtis Ct, Glen Burnie, MD 21060.



Site Map



02/09/2024 Inspection – Overview of O04A8O00001.



02/09/2024 Inspection – O04A8O00001 inside pipe.



02/09/2024 Inspection – Broken manhole lid.



02/09/2024 Inspection – Manhole interior with broken lid.



02/09/2024 Inspection – Upstream SWM BMP.

**APPENDIX B | INFRASTRUCTURE CONDITION REPORTS SUBMITTED BY
KCI TO ANNE ARUNDEL COUNTY**

**Anne Arundel County IDDE Outfall Screening
Infrastructure Condition Report
Outfall M11A3O00001**

On November 15, 2023, while performing illicit discharge inspections for Anne Arundel County, KCI Technologies, Inc. discovered Outfall M11A3O00001 which is eroded, and several sections of the projecting pipe have collapsed. Two sections of pipe have fully detached from the outfall, and the adjacent culvert (M11A3O00011) appears unstable as well, as it is being held up by two wooden slats. The banks downstream of these outfalls are also eroding.

LOCATION: 8378 Veterans Hwy, Millersville, MD 21108.





11/15/2023 Inspection – Overview of culvert (left) and Outfall M11A3000001 (right).



11/15/2023 Inspection – Collapsed sections of pipe.



11/15/2023 Inspection – Outfall M11A3O00001 overview.



11/15/2023 Inspection – Outfall M11A3O00001 downstream.

**Anne Arundel County IDDE Outfall Screening
Infrastructure Condition Report
Outfall M08C8O00011**

On November 16, 2023, while performing illicit discharge inspections for Anne Arundel County, KCI Technologies, Inc. discovered Outfall M08C8O00011 had major erosion surrounding the outfall. The outfall pipe is fully exposed, and a concrete slab is laying against the top of the pipe. The pipe's bituminous coating is degrading, and the barrel is corroded at some parts. The banks downstream of the outfall are also eroding.

LOCATION: 305 Hospital Dr, Glen Burnie, MD 21061.





11/16/2023 Inspection – Overview of Outfall M08C8O00011.



11/16/2023 Inspection – Erosion above the outfall with the exposed pipe and concrete slab.



11/15/2023 Inspection – Outfall M08C8O00011 barrel pipe.

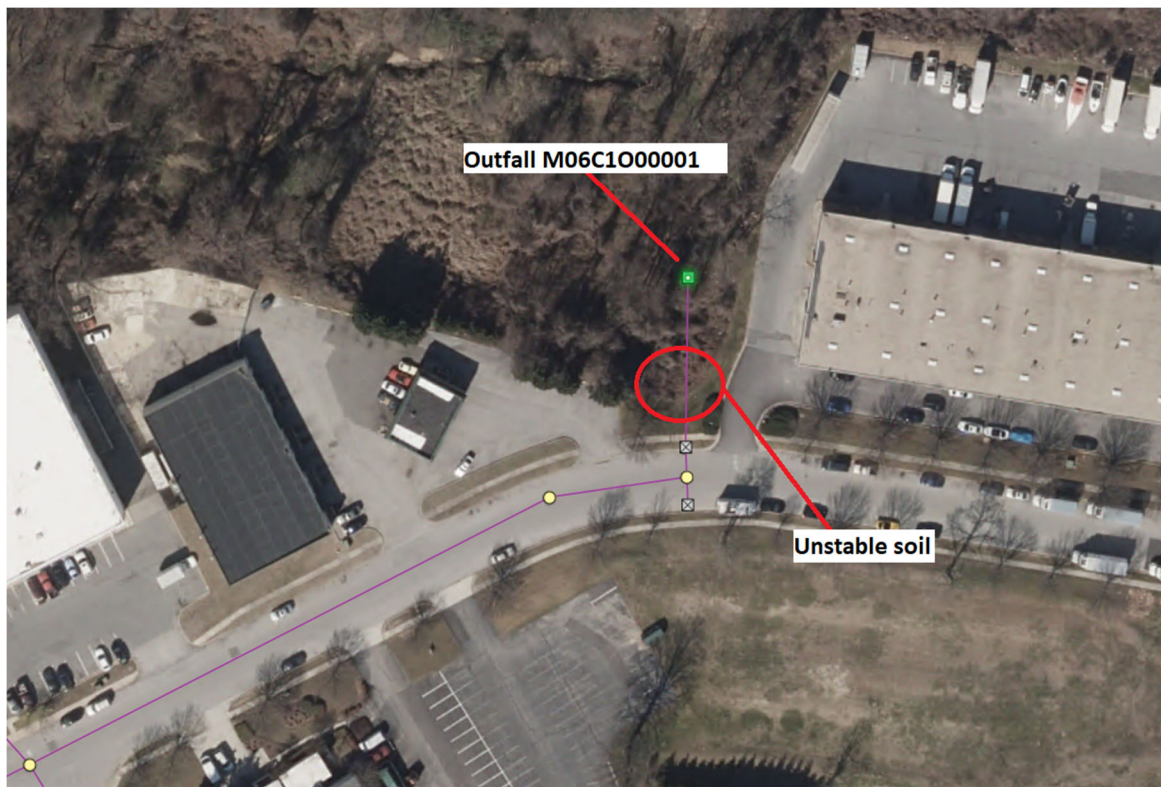


11/15/2023 Inspection – Outfall M08C8O00011 downstream.

**Anne Arundel County IDDE Outfall Screening
Infrastructure Condition Report
Outfall M06C1O00001**

On November 30, 2023, while performing illicit discharge inspections for Anne Arundel County, KCI Technologies, Inc. discovered unstable soil conditions at Outfall M06C1O00001. The soil around and upslope of the endwall has been disturbed and is now loose, while the slope the endwall daylighted from is eroding beneath and to the sides of the endwall. The last section of barrel has detached from the pipe and endwall structure, allowing flow to bypass the endwall and undermine the outfall. The banks downstream of these outfalls are also eroding.

LOCATION: 150 Penrod Ct # D, Glen Burnie, MD 21061.





11/30/2023 Inspection – Overview of M06C1000001.



11/30/2023 Inspection – Unstable soil.



11/30/2023 Inspection – Flow undermining outfall.



11/30/2023 Inspection – Outfall M06C1000001 barrel.



11/30/2023 Inspection – Erosion on the sides of the endwall.

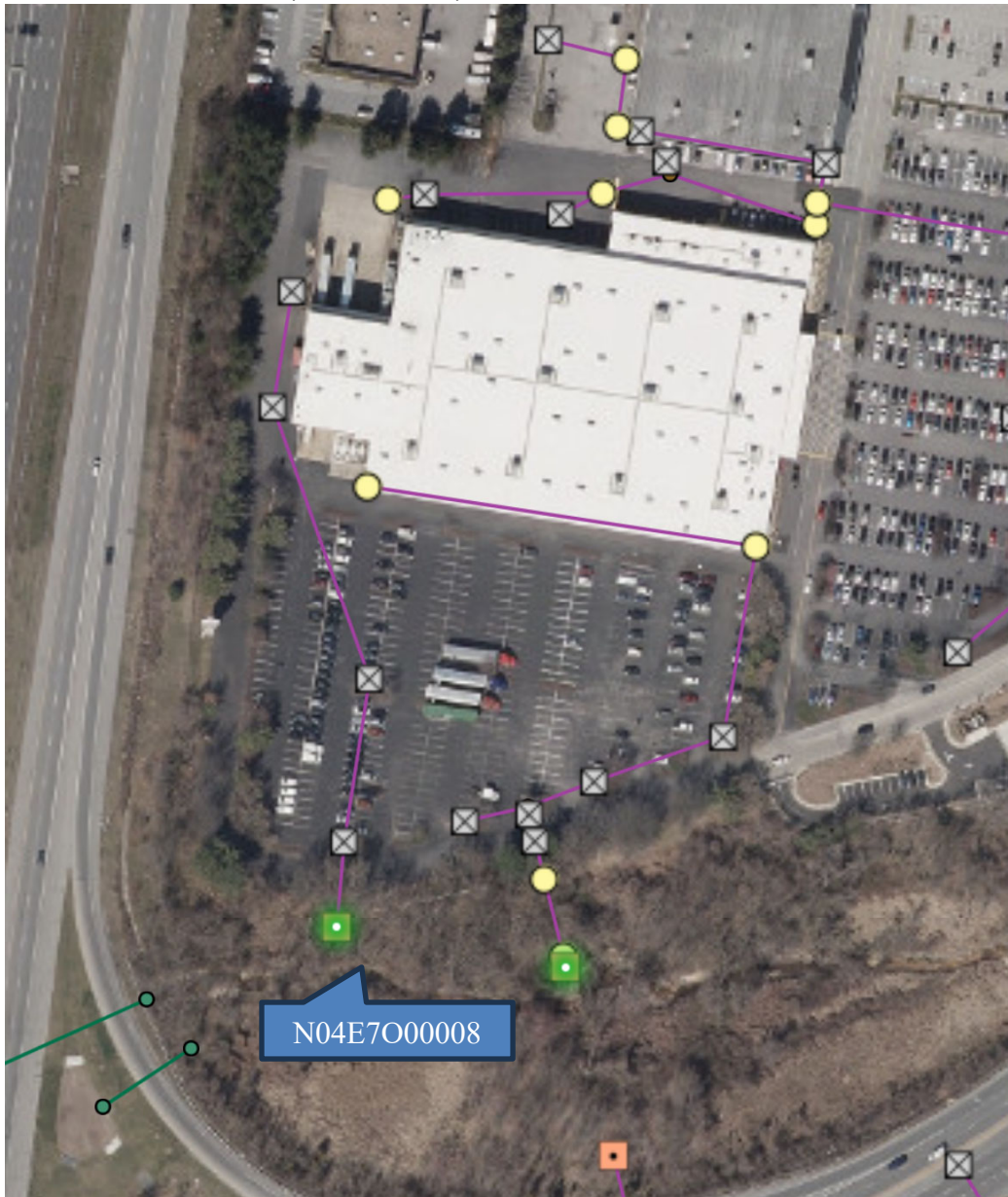


11/30/2023 Inspection – Downstream of Outfall M06C1000001.

**Anne Arundel County IDDE Outfall Screening
Infrastructure Condition Report
Outfall N04E7O00008**

On December 1, 2023, while performing illicit discharge inspections for Anne Arundel County, KCI Technologies, Inc. discovered Outfall N04E7O00008 which is eroded at the first section of pipe. The first pipe joint is disconnected causing undermining and erosion to occur adjacent to the pipe.

LOCATION: 575 E Ordnance Rd, Glen Burnie, MD 21060





12/01/2023 Inspection – Outfall N04E7O00008 overview.



12/01/2023 Inspection – Outfall N04E7O00008 barrel.



12/01/2023 Inspection – Outfall N04E7O00008 bank erosion above endwall.

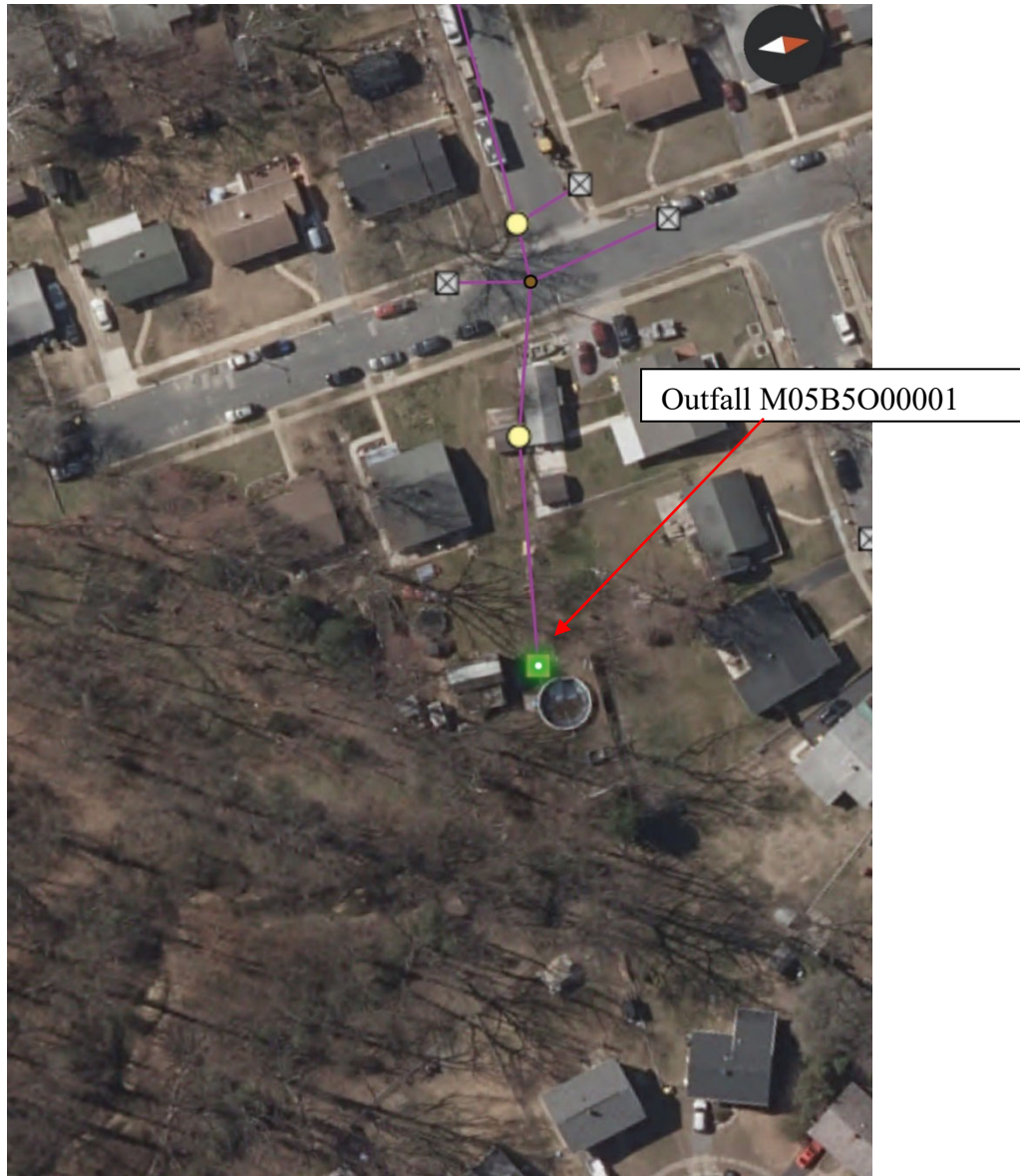


12/01/2023 Inspection – Outfall N04E7O00008 downstream.

**Anne Arundel County IDDE Outfall Screening
Infrastructure Condition Report
Outfall M05B5O00001**

On February 8, 2024, while performing illicit discharge inspections for Anne Arundel County, KCI Technologies, Inc. discovered the end section is fully detached at Outfall M05B5O00001. The corrugated metal pipe is also corroded. The outfall had a steady, continuous flow, but no illicit discharge was detected.

LOCATION: 1405 Rowe Drive, Glen Burnie, MD 21061.





02/08/2024 Inspection – Overview of M05B5O00001 and separation of the end section from the pipe.



02/08/2024 Inspection – Outfall M05B5O00001 corroded pipe.



02/08/2024 Inspection – Downstream of M05B5000001.



02/08/2024 Inspection – Corrosion on the pipe bottom.

**Anne Arundel County IDDE Outfall Screening
Infrastructure Condition Report
Outfall N07C7O00001**

On February 8, 2024, while performing illicit discharge inspections for Anne Arundel County, KCI Technologies, Inc. discovered concrete being undermined at Outfall N07C7O00001. The soil and rip rap underneath the first upstream structure was eroded away and undermining the concrete.

LOCATION: 116 N Jerome Pkwy, Glen Burnie, MD 21060.





02/08/2024 Inspection – Concrete of first upstream structure being undermined



02/08/2024 Inspection – Overview of N07C7O00001.

**Anne Arundel County IDDE Outfall Screening
Infrastructure Condition Report
Outfall N07G8O00030**

On February 8, 2024, while performing illicit discharge inspections for Anne Arundel County, KCI Technologies, Inc. discovered a structural issue with the first upstream structure to Outfall N07G8O00030. The metal casting for the manhole was unbolted and off-center, exposing the manhole opening.

LOCATION: 7726 Baltimore Annapolis Blvd, Glen Burnie, MD 21060.





2/8/2024 Inspection – First upstream manhole, metal cast fallen off.



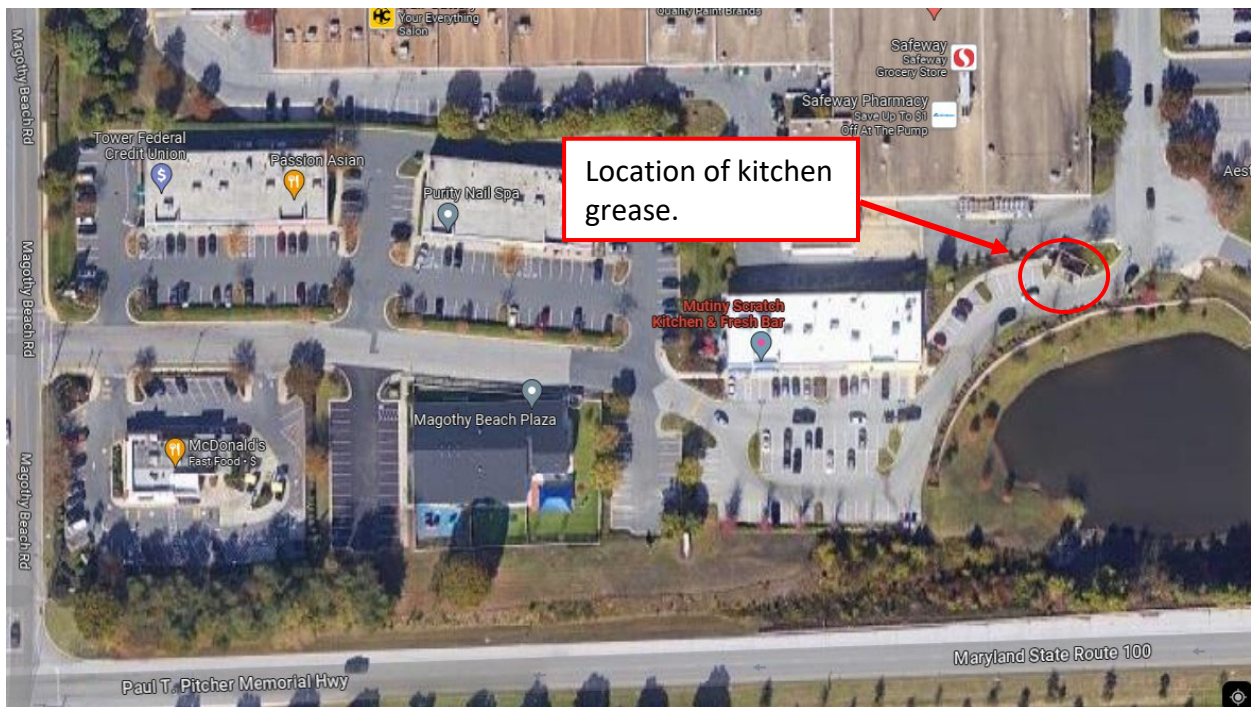
2/8/2024 Inspection – Overview of N07G8O00030.

**APPENDIX C | UPLAND POLLUTION SOURCE REPORTS SUBMITTED BY KCI TO
ANNE ARUNDEL COUNTY**

**Anne Arundel County IDDE Outfall Screening
Upland Pollution Report
Mutiny Scratch Bar & Fresh Bar**

On November 6, 2023, while performing commercial industrial inspections for Anne Arundel County, KCI Technologies, Inc. discovered kitchen grease on top of the grease bin and on the pavement. The grease is assumed to be coming from Mutiny Scratch Bar & Fresh Bar which is located in the nearest building to this grease bin. The pavement staining extends past the trash dumpsters next to the grease bin.

LOCATION: 33 Magothy Beach Road #100, Pasadena, MD 21122.





11/6/2023 Inspection – Grease bin and staining

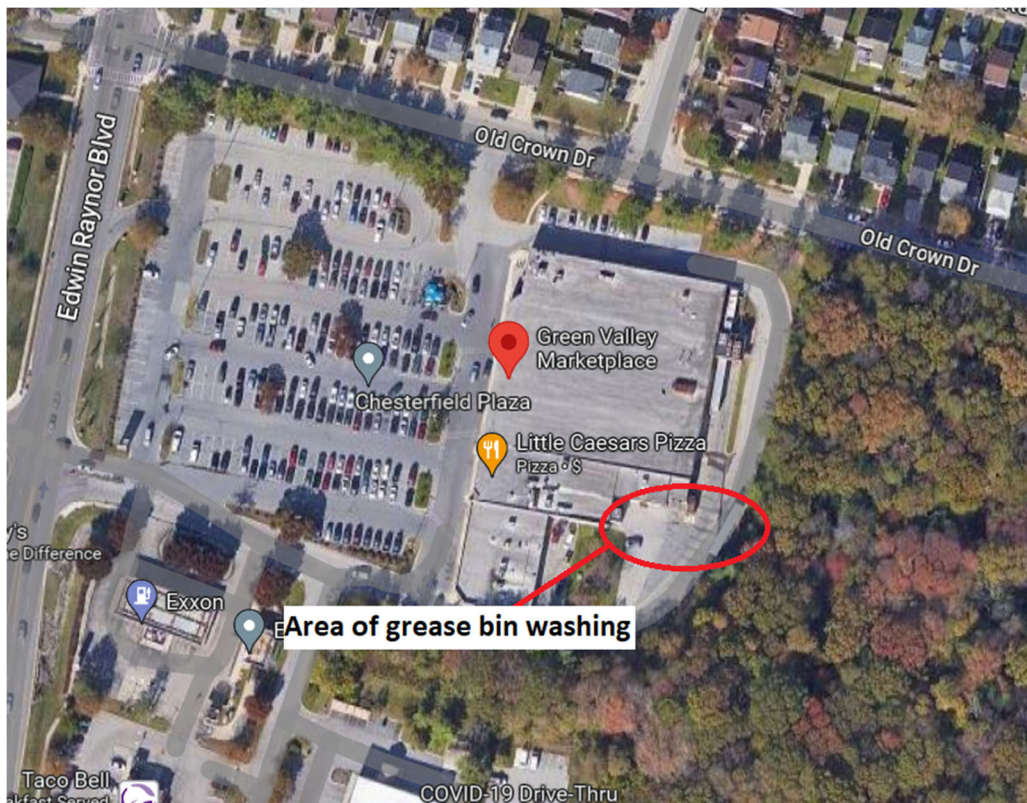


11/6/2023 Inspection – Grease staining on pavement

**Anne Arundel County IDDE Outfall Screening
Upland Pollution Report
Green Valley Marketplace**

On November 7, 2023, while performing commercial industrial inspections for Anne Arundel County, KCI Technologies, Inc. discovered employees of Green Valley Marketplace using a hose to wash down the building's grease bin. Rainbow sheen was observed in the wash water, which was running downslope into a stormwater inlet. Upon a revisit to take further photos after the business's employees had ceased washing, KCI staff observed another employee washing off the dumpsters in the area. No controls were in place to deter either discharge from entering the storm drain.

LOCATION: 8095A Edwin Raynor Blvd, Pasadena, MD 21122





11/7/2023 Inspection – Employees washing down grease bin.



11/7/2023 Inspection – Staining from greasy wash water.



11/7/2023 Inspection – Greasy wash water entering storm drain.



11/7/2023 Inspection – Cleaning supplies near grease bin.



11/7/2023 Inspection – Greasy wash water.



11/7/2023 Inspection – Overview of area.

**Anne Arundel County IDDE Outfall Screening
Upland Pollution Report
Wendy's**

On November 7, 2023, while performing commercial industrial inspections for Anne Arundel County, KCI Technologies, Inc. discovered heavy pavement staining located in the dumpster containment area and evidence of the staining extending into the parking lot at Wendy's. The source of the staining is unknown but may be related to dumpster juices or employees spraying the dumpsters down (a hose was observed in the containment area).

LOCATION: 8098 Edwin Raynor Boulevard, Pasadena, MD 21122.





11/7/2023 Inspection – Dumpster area staining.

**Anne Arundel County IDDE Outfall Screening
Upland Pollution Report
Pasadena Pre-owned**

On November 7, 2023, while performing commercial industrial inspections for Anne Arundel County, KCI Technologies, Inc. discovered employees actively washing many cars with soap on the open lot at Pasadena Pre-owned. Soap filled water was running off the lot into Margaret Ave and MD 177.

LOCATION: 3101 Mountain Rd, Pasadena, MD 21122





11/7/2023 Inspection – Employee washing cars with soap.



11/7/2023 Inspection – Soapy water running off into MD 177.



11/7/2023 Inspection – Soapy water sitting on lot from other vehicles being washed.

**Anne Arundel County IDDE Outfall Screening
Upland Pollution Report
Food Lion – Mountain Market Place**

On November 7, 2023, while performing commercial industrial inspections for Anne Arundel County, KCI Technologies, Inc. discovered heavy kitchen grease pavement staining behind the Food Lion building. In addition, trash was noted at two curb cut openings that drain the parking lot areas behind the Food Lion and Mountain Market Place building.

LOCATION: 350 Mountain Road (Mountain Market Place), Pasadena, MD 21122.





11/7/2023 Inspection – Grease bin and staining.



11/7/2023 Inspection – Trash behind Food Lion building.

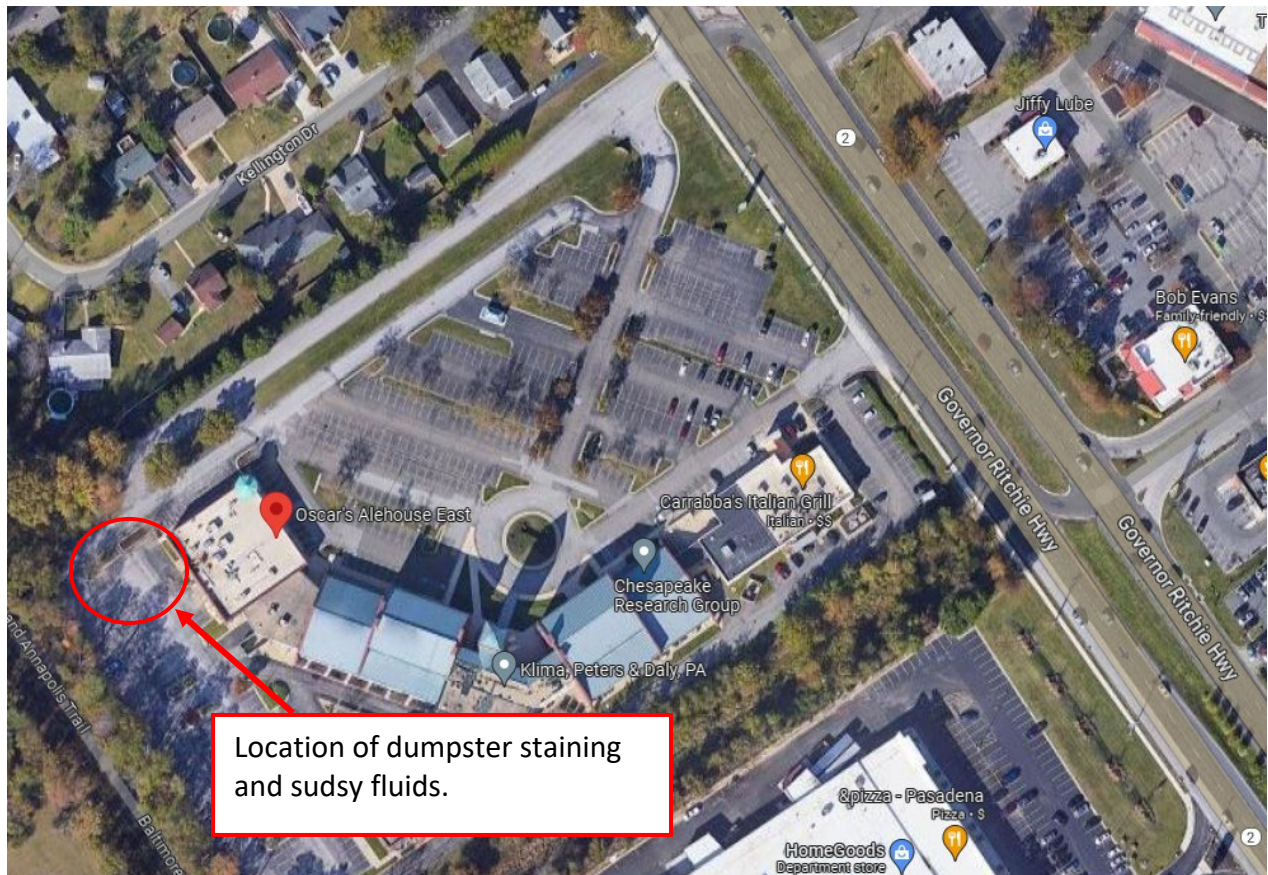


11/7/2023 Inspection – Trash behind Food Lion building.

**Anne Arundel County IDDE Outfall Screening
Upland Pollution Report
Oscar's Alehouse East**

On November 8, 2023, while performing commercial industrial inspections for Anne Arundel County, KCI Technologies, Inc. discovered heavy pavement staining and fluids on the parking lot that appeared to have suds near a stormdrain inlet. The fluids appear to be coming from the enclosed dumpster area located behind Oscar's Alehouse East building in the parking lot.

LOCATION: 8026 Ritchie Highway Suite B, Pasadena, MD 21122.





11/7/2023 Inspection – Dumpster area staining.

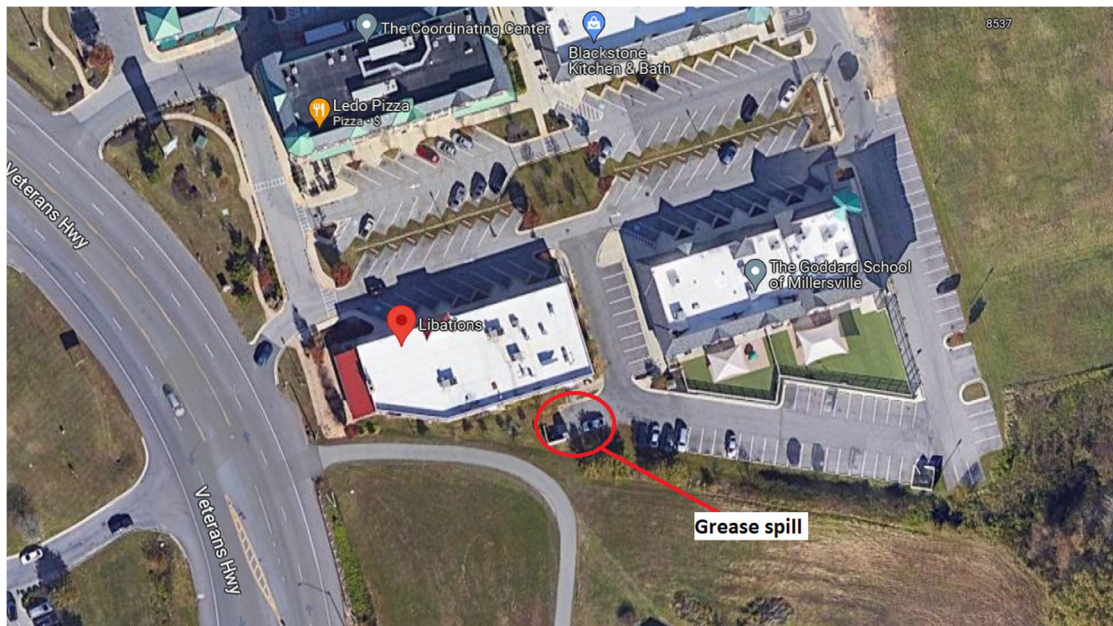


11/7/2023 Inspection – Dumpster area staining/sudsy fluids.

**Anne Arundel County IDDE Outfall Screening
Upland Pollution Report
Libations**

On November 9, 2023, while performing commercial industrial inspections for Anne Arundel County, KCI Technologies, Inc. discovered a kitchen grease spill located in the dumpster containment in the parking lot at Libations. There is a large spill next to the grease bin, and an additional smaller spill on the pavement in front of the waste collection area. The fence of the dumpster containment is stained black, indicating previous and ongoing issues with grease housekeeping.

LOCATION: 8541 Veterans Hwy, Millersville, MD 21108.





11/9/2023 Inspection – Grease spill.



11/9/2023 Inspection – Grease spill and staining from past spills.



11/9/2023 Inspection – Dumpster containment, pavement stains.



11/9/2023 Inspection – Smaller spill out front of dumpsters.

**Anne Arundel County IDDE Outfall Screening
Upland Pollution Report
Target**

On November 16, 2023, while performing commercial industrial inspections for Anne Arundel County, KCI Technologies, Inc. discovered evidence of public dumping at a donation bin near Target. Large pieces of furniture, mattresses, and trash bags with clothes and garbage were left around the donation bins.

LOCATION: 7951 Nolpark Ct, Glen Burnie, MD 21061





11/16/2023 Inspection – Public dumping at a donation bin.

**Anne Arundel County IDDE Outfall Screening
Upland Pollution Report
Glen Burnie Town Center**

On November 30, 2023, while performing commercial industrial inspections for Anne Arundel County, KCI Technologies, Inc. discovered potable water line leaks around the businesses at Delaware Avenue and Baltimore-Annapolis Boulevard. Water was being pumped from a fire hydrant and water line meters as an above-ground temporary water system. There were several connection areas leaking and spilling water onto the street and into storm drain inlets. Ice melt pellets were being used to prevent the pooling water from freezing on the roads.

LOCATION: 7497 Baltimore-Annapolis Boulevard, Glen Burnie, MD 21061





11/30/2023 Inspection – Fire hydrant connection.



11/30/2023 Inspection – Pooling water with ice melt pellets.



11/30/2023 Inspection – Water line leak.



11/30/2023 Inspection – Water draining into inlet.



11/30/2023 Inspection – Water line meter connection.



11/30/2023 Inspection – Unattached hose with open valve leak.

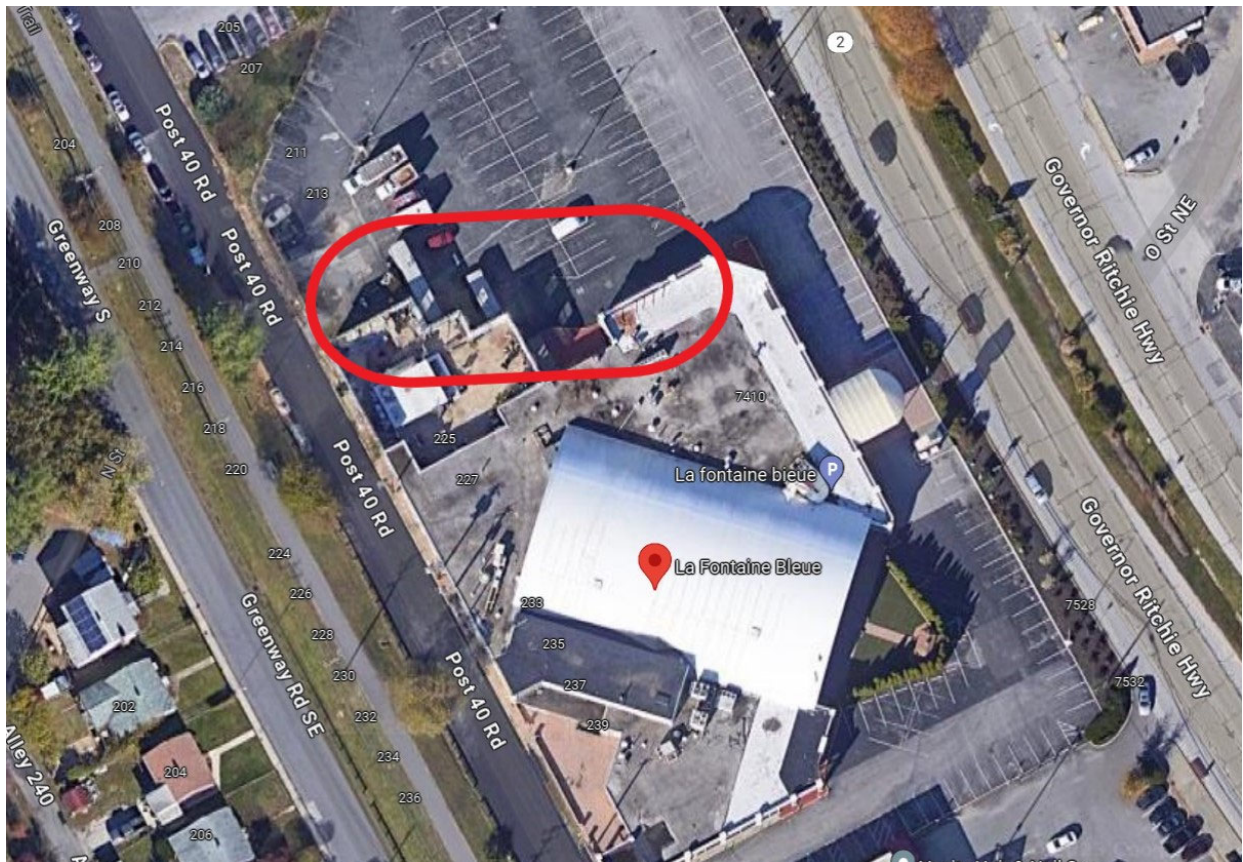


11/30/2023 Inspection – Inlet interior.

**Anne Arundel County IDDE Outfall Screening
Upland Pollution Report
La Fontaine Bleue**

On November 30, 2023, while performing commercial industrial inspections for Anne Arundel County, KCI Technologies, Inc. discovered construction materials including stockpiles of dirt sitting in the LA Fontaine Bleue parking lot. No cover or erosion and sediment controls were observed in the parking lot to prevent material movement during rain events.

LOCATION: 7514 Ritchie Hwy, Glen Burnie, MD 21061.





11/30/2023 Inspection – Construction materials in parking lot, no controls in place.

**Anne Arundel County Systematic IDDE Outfall Screening
Upland Pollution Report
El Cabrito Mexican Grill**

On December 7, 2023, while performing commercial industrial inspections for Anne Arundel County, KCI Technologies, Inc. discovered a grease bin with heavy staining on the pavement and had recently been hosed down behind El Cabrito Mexican Grill

LOCATION: 8971 Fort Smallwood Rd, Pasadena, MD 21122





12/7/2023 Inspection – Recently hosed down grease bin with heavy staining.

**Anne Arundel County Systematic IDDE Outfall Screening
Upland Pollution Report
Tanyard Cove Community Clubhouse**

On December 21, 2023, while performing commercial industrial inspections for Anne Arundel County, KCI Technologies, Inc. discovered an uncovered salt pile at the Tanyard Cove Community Clubhouse parking lot.

LOCATION: 7490 Ashmore Ave, Glen Burnie, MD 21060



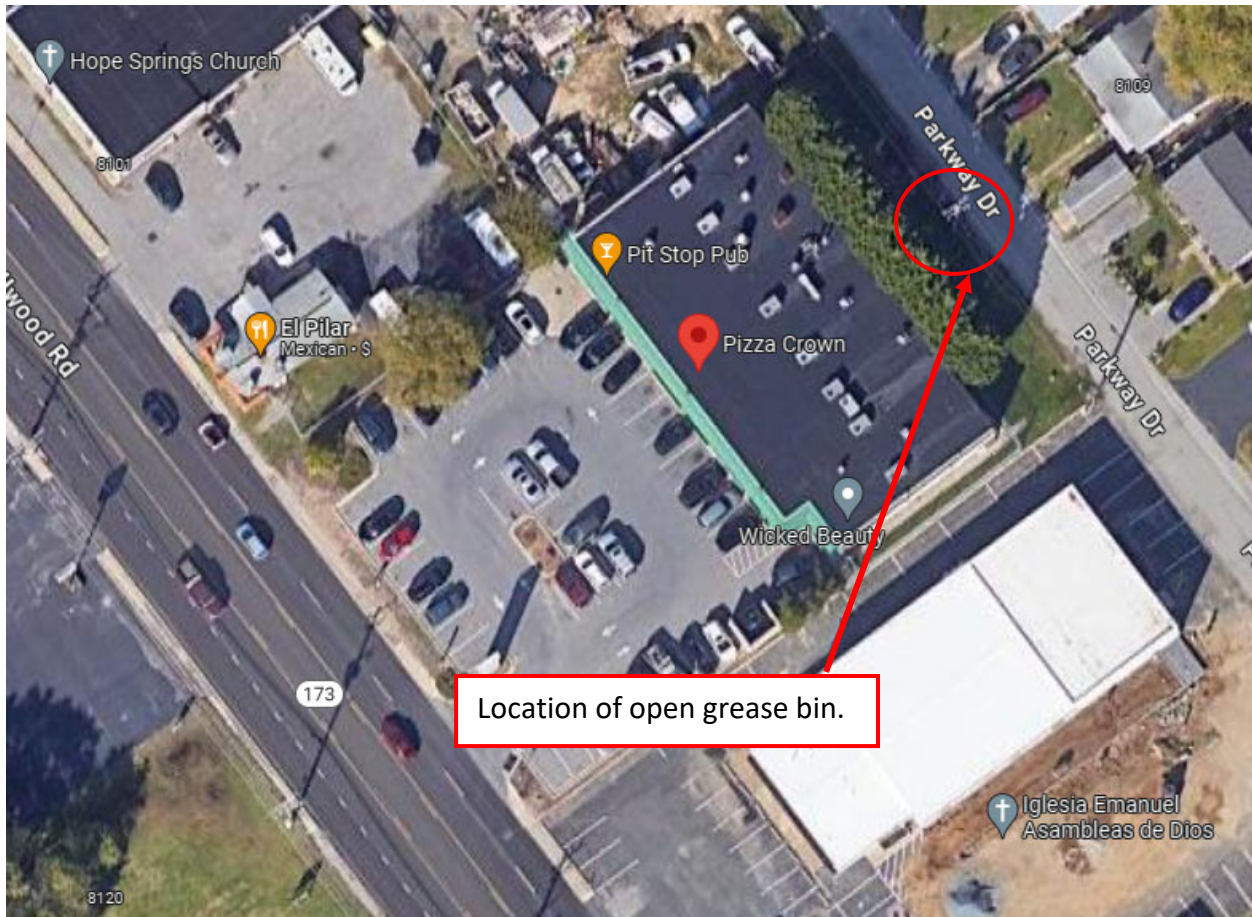


12/21/2023 Inspection – Uncovered salt pile.

**Anne Arundel County IDDE Outfall Screening
Upland Pollution Report
Pizza Crown**

On December 21st, 2023, while performing commercial industrial inspections for Anne Arundel County, KCI Technologies, Inc. discovered heavy pavement staining. The staining appears to be coming from the open grease bin located behind the building from Pizza Crown.

LOCATION: 8111 Fort Smallwood Rd, Curtis Bay, MD 21226



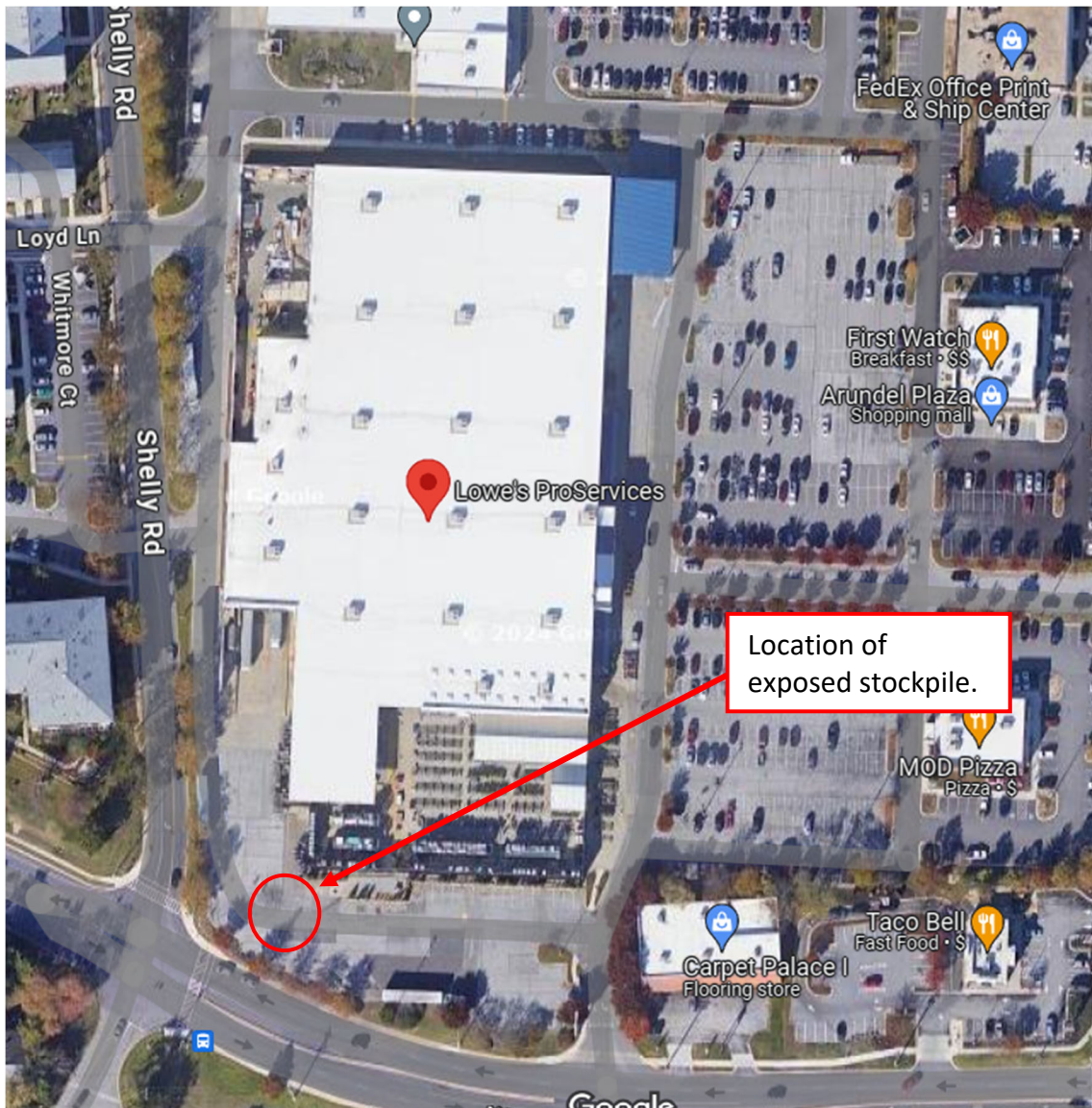


12/21/2023 Inspection – Open grease bin staining.

**Anne Arundel County IDDE Outfall Screening
Upland Pollution Report
Lowe's**

On February 8, 2024, while performing commercial industrial inspections for Anne Arundel County, KCI Technologies, Inc. discovered an uncovered salt stockpile on the side of the Lowe's building. No controls were observed to prevent material movement during rain events.

LOCATION: 6650 Governor Ritchie Hwy, Glen Burnie, MD 21061.





2/8/2024 Inspection – Uncovered salt stockpile.

**Anne Arundel County IDDE Outfall Screening
Upland Pollution Report
Dollar General**

On February 8, 2024, while performing commercial industrial inspections for Anne Arundel County, KCI Technologies, Inc. discovered evidence of public dumping along the fence line of the parking lot of Dollar General. Large quantities of smaller pieces of trash were along the entire fence line, as well as some larger pieces of wooden trash.

LOCATION: 5107 Ritchie Hwy, Brooklyn Park, MD 21225





2/8/2024 Inspection – Public dumping along fence line of parking lot.



2/8/2024 Inspection – Public dumping along fence line of parking lot

**Anne Arundel County IDDE Outfall Screening
Upland Pollution Report
Sidelines Sports Bar & Grill**

On February 8, 2024, while performing commercial industrial inspections for Anne Arundel County, KCI Technologies, Inc. discovered grease stains around two grease bins located behind Sidelines Sports Bar & Grill. A large area of the sidewalk and pavement between the two bins was stained. In addition, the top of one of the bins had solidified grease.

LOCATION: 105 Chesapeake Center Ct, Glen Burnie, MD 21060.





2/8/2024 Inspection – Grease staining on grease bins and pavement.



2/8/2024 Inspection – Grease staining on pavement and grease on top of bin.

**Anne Arundel County IDDE Outfall Screening
Upland Pollution Report
Village Liquors**

On February 8, 2024, while performing commercial industrial inspections for Anne Arundel County, KCI Technologies, Inc. discovered evidence of trash and building materials along the back of the Village Liquors' store. Large quantities of metal and wooden trash were found in a pile behind the store, as well as filled trash bags.

LOCATION: 720 Church Street, Brooklyn, MD 21225





2/8/2024 Inspection – Trash and building material debris behind Village Liquors.

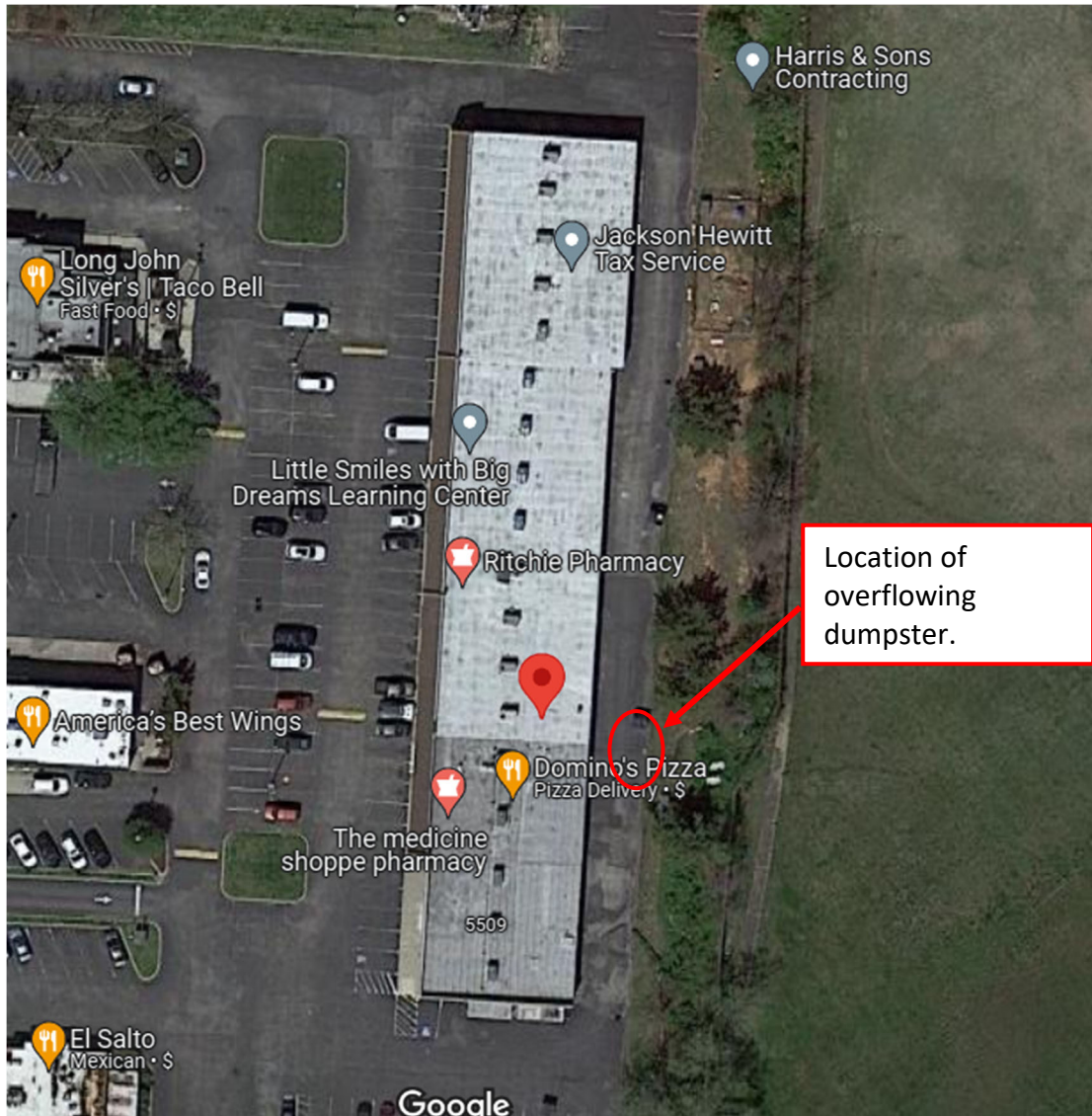


2/8/2024 Inspection – Trash and building material debris behind Village Liquors.

**Anne Arundel County IDDE Outfall Screening
Upland Pollution Report
Domino's Pizza**

On February 8, 2024, while performing commercial industrial inspections for Anne Arundel County, KCI Technologies, Inc. discovered evidence of an overflowing dumpster behind Domino's Pizza. Miscellaneous pieces of trash were surrounding the dumpster, and trash was overflowing from the open top.

LOCATION: 5507 Ritchie Hwy Ste. D, Brooklyn Park, MD 21225





2/8/2024 Inspection – Overflowing dumpster behind Domino's Pizza.

**Anne Arundel County Systematic IDDE Outfall Screening
Upland Pollution Report
Glen Burnie Car Wash**

On February 8, 2023, while performing commercial industrial inspections for Anne Arundel County, KCI Technologies, Inc. discovered an employee actively pre-washing cars before entering a car wash. Buckets of pink liquid, possibly soap, and hoses were lined up outside of the washing bays. The perimeter of the facility was inspected, and all surrounding inlets appeared to be dry. There were structures on the side of the grass that could possibly be a sewer/water system. It is believed that the soapy water from the car washes could possibly be draining into a water treatment system and not storm drains.

LOCATION: 100 Holsum Way, Glen Burnie, MD 21060





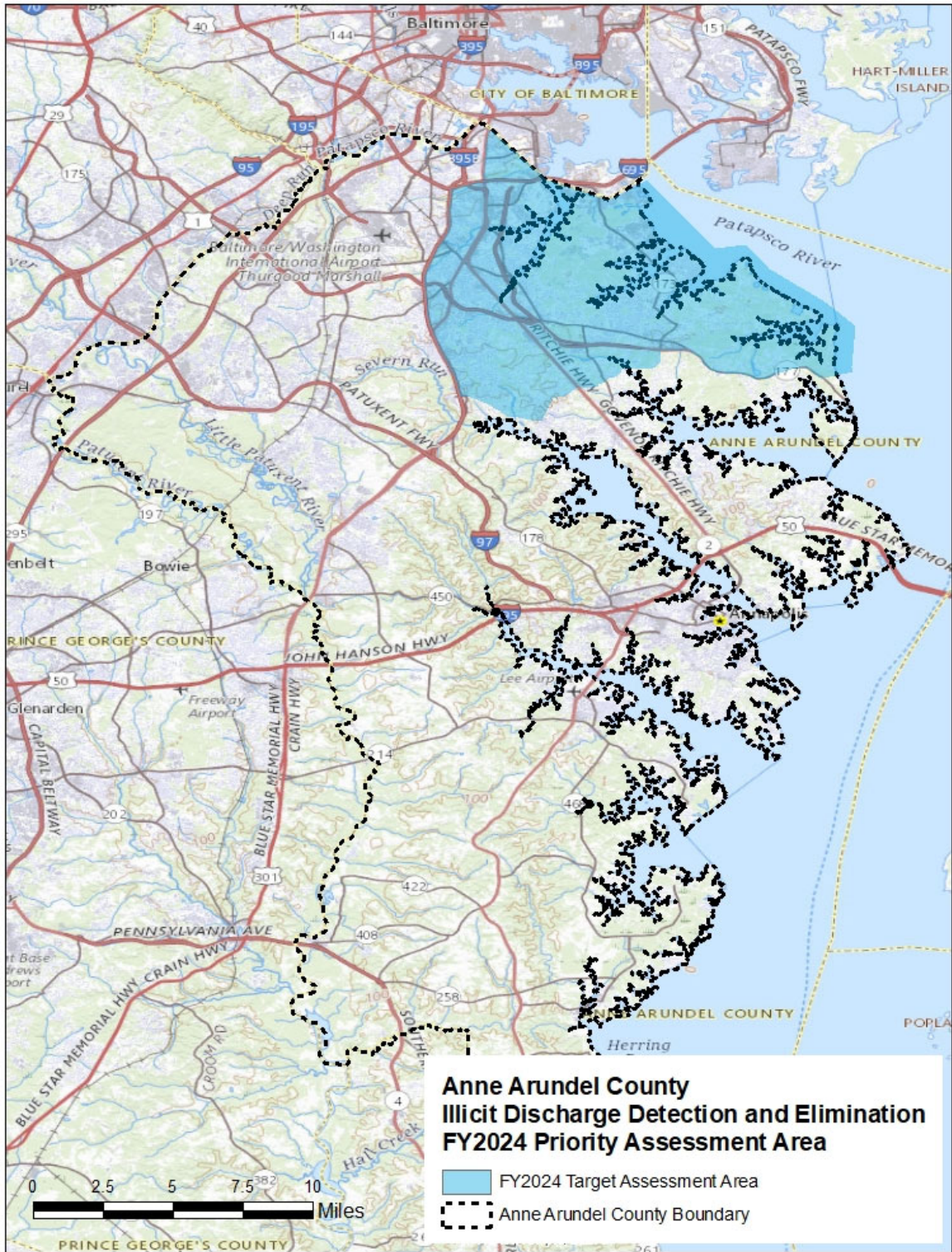
2/8/2024 Re-inspection – Evidence of vehicle pre-washing.

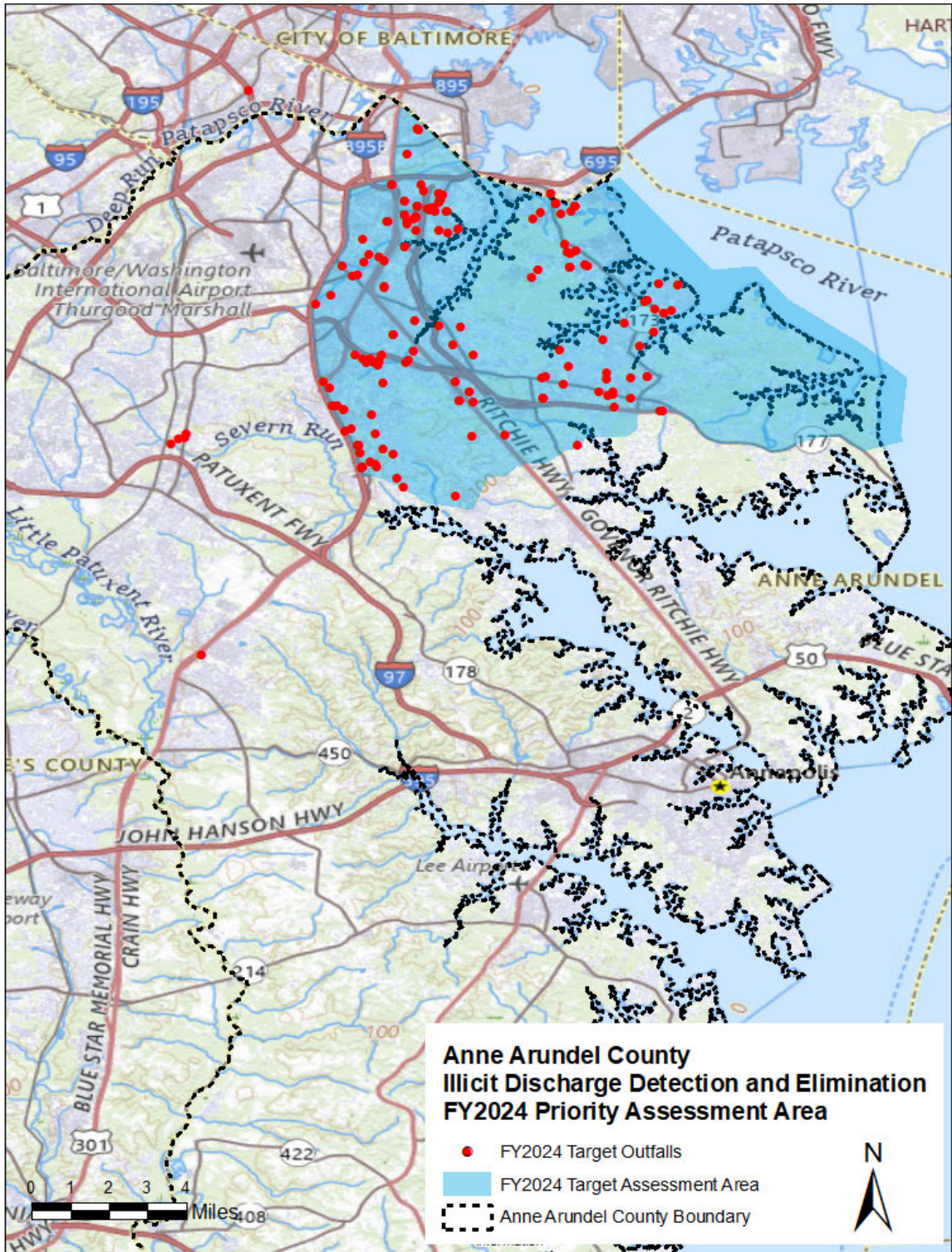


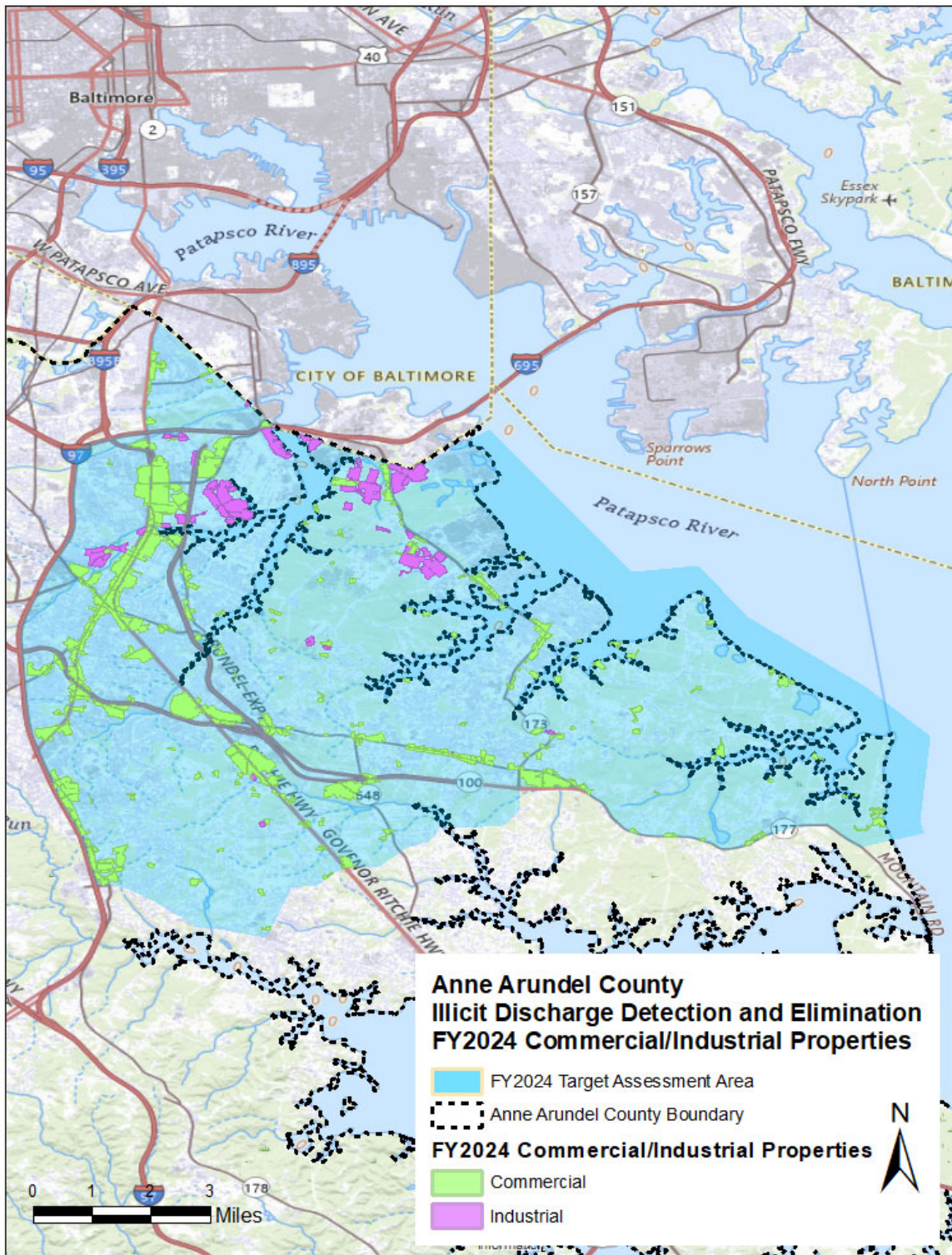
2/8/2024 Re-inspection – Possible water treatment system for soapy water runoff.

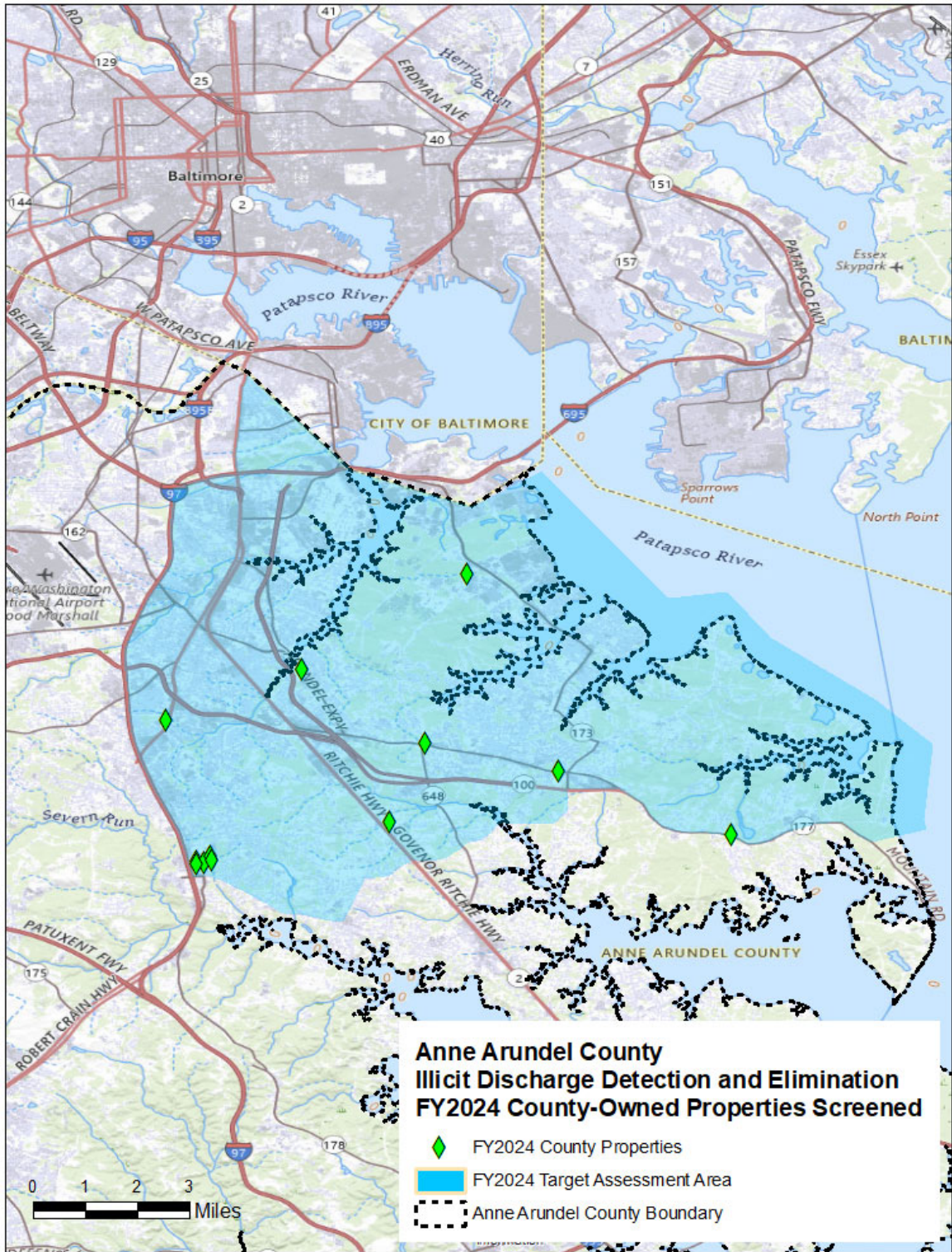
**APPENDIX D | ANNE ARUNDEL COUNTY COMPLIANCE DATABASE
REPORT**

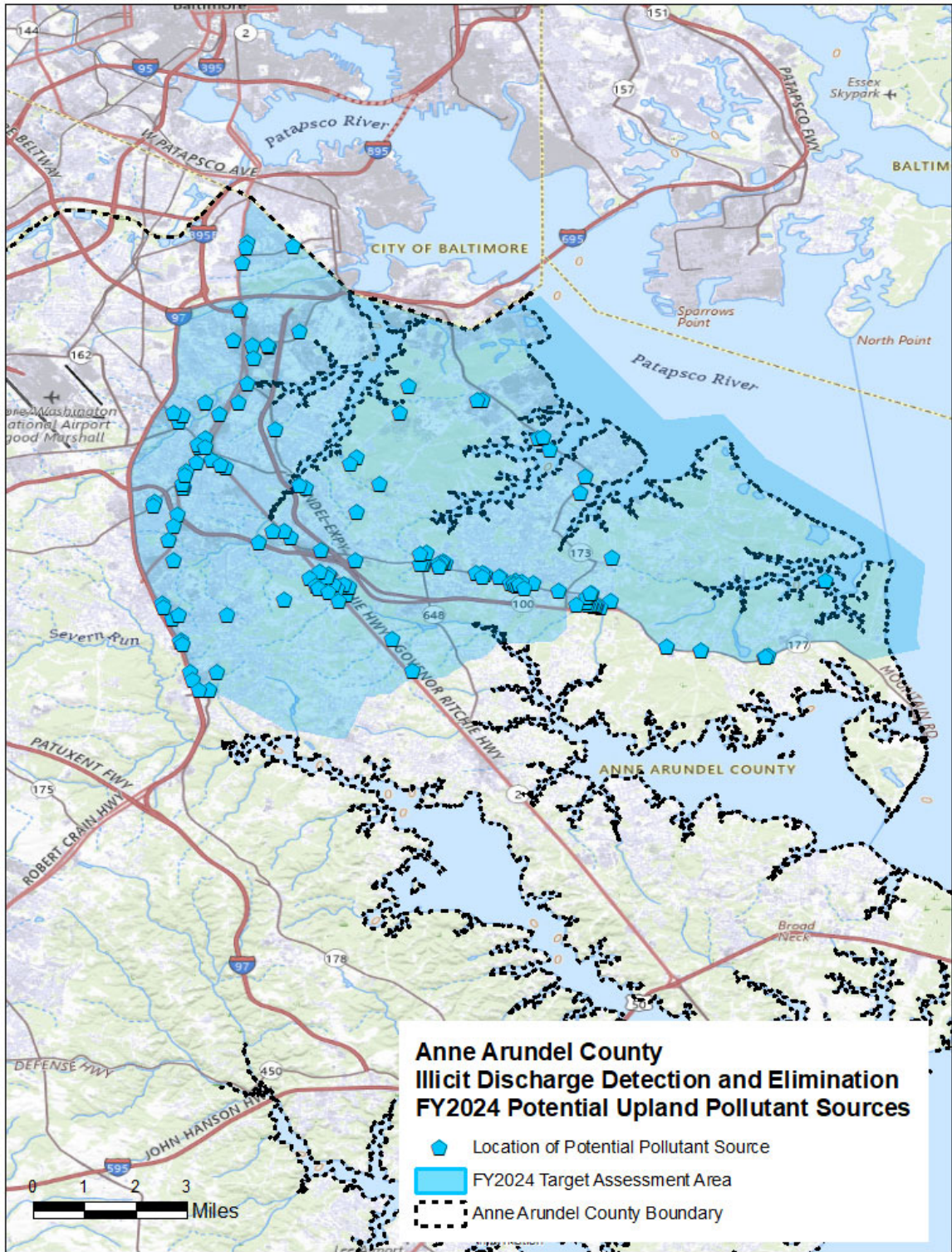
APPENDIX E | IDDE PROGRAM MAPS











APPENDIX F | MDE ADMINISTRATIVE PENTALTIES